

III. Graduates

The graduation rate of new freshman students enrolled in 4-year programs since 2001 (excluding new freshman students in Pharmacy) is shown in Table 22.

Table 23, added this year, shows the completion rate of new freshman students enrolled in the pre-pharmacy program for same time period. Completion rate, defined as entry (P1 status) into the College of Pharmacy, ideally occurs after the second year of matriculation at Xavier—this is considered 100% completion rate. Entry after the third year is considered 150% of standard time; and after the fourth year, 200%. The addition of this table brings internal reporting at Xavier more closely in line with external reporting to the IPEDS Graduation Rate Report. Please note that beginning with the 2005 freshman cohort, the Pre-Pharmacy major became Chemistry Pre-Pharmacy, a 4-year program. For continuity with the previous program structure, we separately analyze these two groups (4-year vs. pre-pharmacy) of new first-time freshmen. This is consistent with our reports to IPEDS.

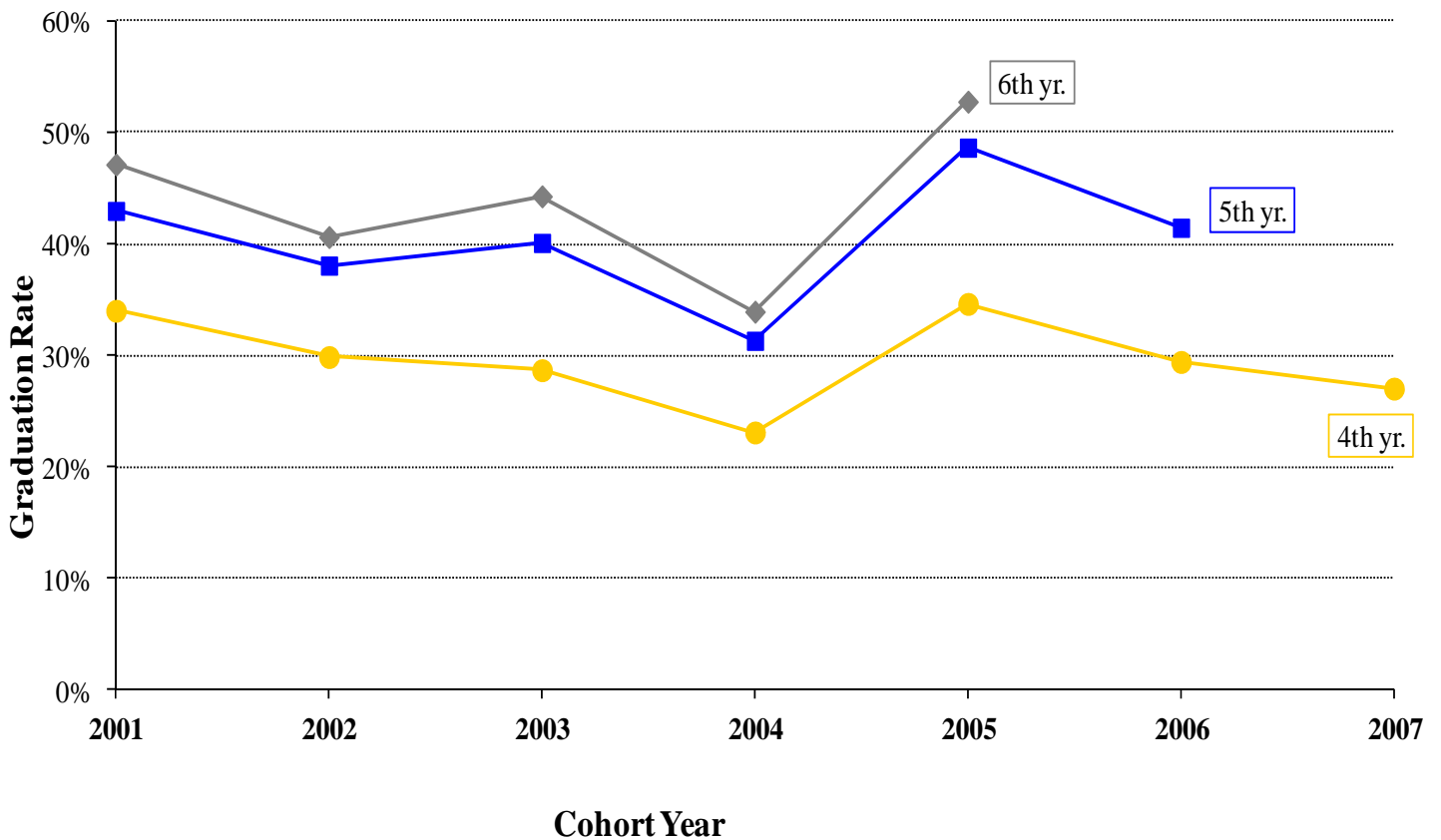
Since Xavier's enrollment is heaviest in the natural sciences, this area has the largest percentage of graduates from within the College of Arts & Sciences, as is shown in Table 24 and Table 25. Table 26a provides the number of graduates, by ethnicity and gender, in each academic discipline within the College of Arts & Sciences. Table 26b provides same breakdown for the graduates of the College of Pharmacy and of the Graduate School.

Xavier's students are attending graduate and professional schools at a rate that reflects the efforts of Xavier faculty, staff and administration. Data supplied from the National Student Clearinghouse is presented in Tables 27 – 29. As shown in Table 27, the percent of students from the College of Arts and Sciences who enrolled in graduate/professional school in the fall or spring semester after graduation was 25.9% for 2010–11 graduates. Within the Natural Sciences/Math and Social Sciences disciplines, nearly 1 of every 3 students attended graduate/professional school during the fall semester after graduation. Table 28 gives the breakdown, by major, of Arts & Sciences graduates from 2006–7 to 2010–11 who, in the fall semester following graduation, attended graduate/professional school. Table 29 highlights the disciplines and areas of concentration in which our graduates are pursuing graduate/professional degrees.

Table 30 indicates the breakdown by major of graduates from Xavier's Graduate School.

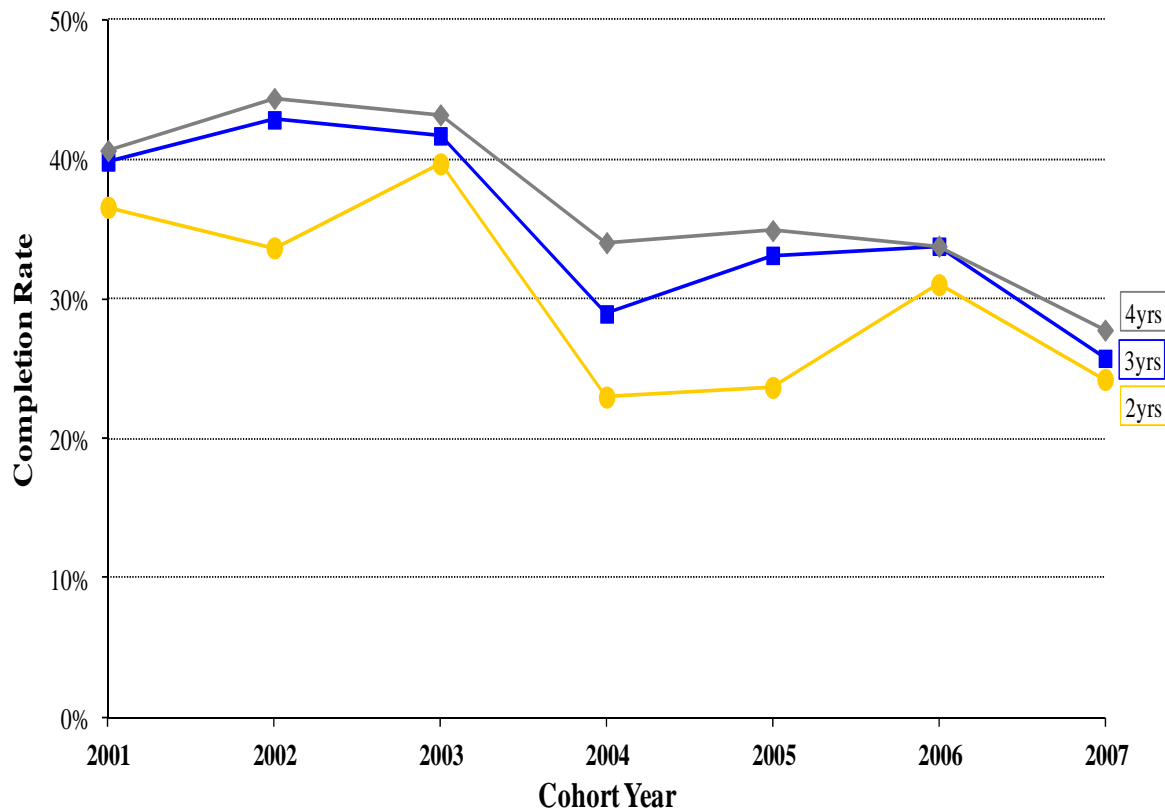
22. Graduation Rate of Recent Classes¹
(Based on Freshmen in 4–Year Programs)

Freshman Class	# Enrolled	4th yr.		5th yr.		6th yr.		7th yr.		8th yr.	
		#	%	#	%	#	%	#	%	#	%
2001	770	262	34.0%	331	43.0%	363	47.1%	368	47.8%	372	48.3%
2002	780	233	29.9%	297	38.1%	317	40.6%	323	41.4%	326	41.8%
2003	718	206	28.7%	288	40.1%	318	44.3%	333	46.4%	335	46.7%
2004	766	177	23.1%	240	31.3%	260	33.9%	269	35.1%		
2005	485	168	34.6%	236	48.7%	256	52.8%				
2006	299	88	29.4%	124	41.5%						
2007	466	126	27.0%								
TOTAL	4,284	1,260	33.0%	1,516	43.1%	1,514	49.9%	1,293	57.0%	1,033	66.6%



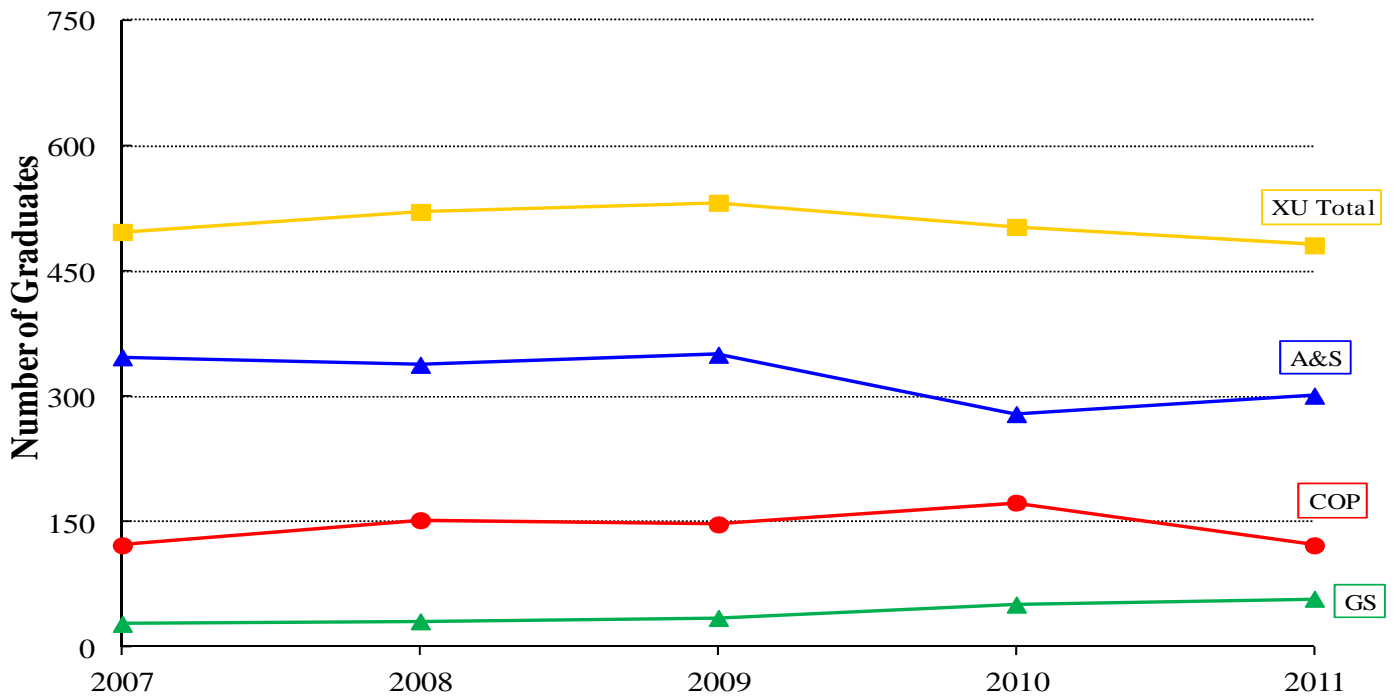
¹ DATA SOURCE: Registrar's Office

23. Completion Rate of Recent Classes ¹ (Based on Freshmen in Pre-Pharmacy Programs)							
Freshman Class	# Enrolled	P1 after 2nd year		P1 after 3rd year		P1 after 4th year	
		#	%	#	%	#	%
2001	123	45	36.6%	49	39.8%	50	40.7%
2002	196	66	33.7%	84	42.9%	87	44.4%
2003	199	79	39.7%	83	41.7%	86	43.2%
2004	235	54	23.0%	68	28.9%	80	34.0%
2005	169	40	23.7%	56	33.1%	59	34.9%
2006	145	45	31.0%	49	33.8%	49	33.8%
2007	198	48	24.2%	51	25.8%	55	27.8%
TOTAL	1,265	377	29.8%	440	34.8%	466	36.8%



¹ DATA SOURCE: Registrar's Office

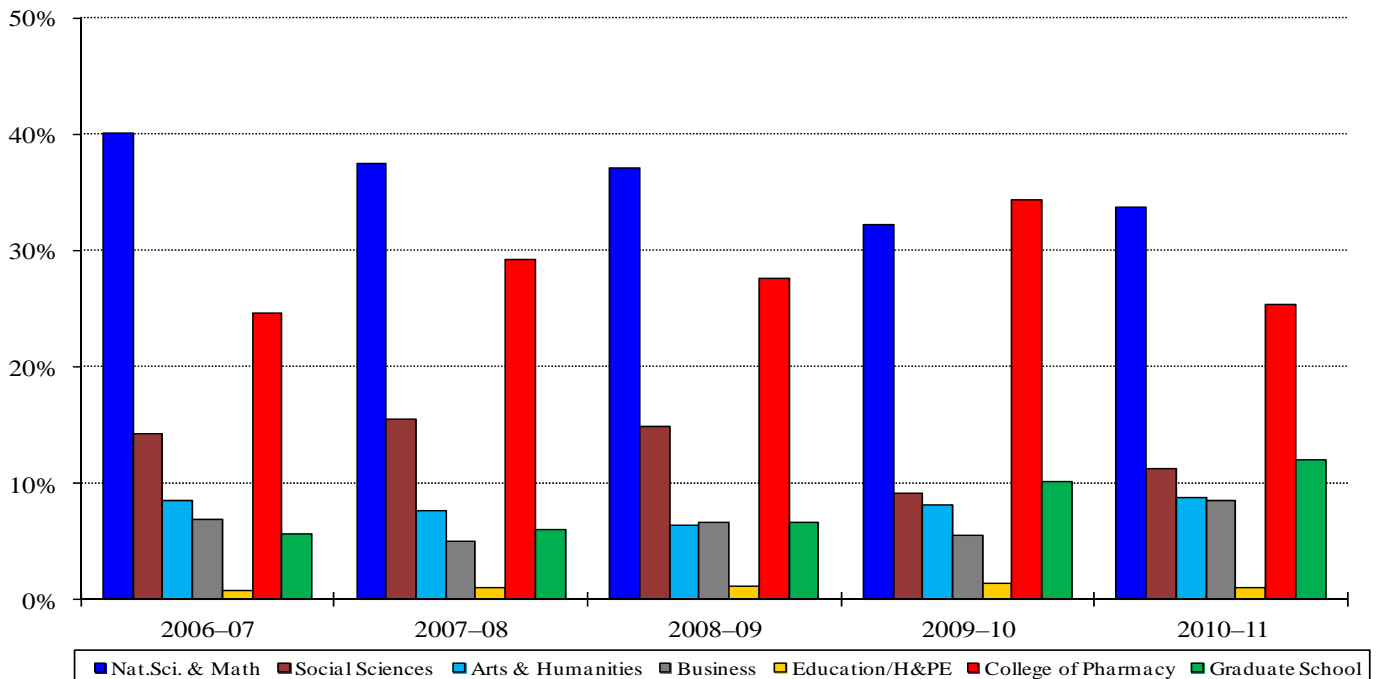
24. Xavier Graduates by Degree, 2007 – 2011 ¹						
COLLEGE/DEGREE	2007	2008	2009	2010	2011	5-yr. Avg.
College of Arts & Sciences						
Bachelor of Science	286	275	274	223	243	260.2
Bachelor of Arts	59	70	77	54	57	63.4
Bachelor of Music	3	0	2	3	1	1.8
Total Arts & Sciences²	347	338	350	279	301	323.0
College of Pharmacy						
Doctor of Pharmacy	122	152	147	173	122	143.2
Total Pharmacy	122	152	147	173	122	143.2
Graduate School						
Master of Arts	22	19	16	22	25	20.8
Master of Arts in Teaching	6	9	16	26	33	18.0
Master of Theology	0	3	3	3	0	1.8
Total Graduate School	28	31	35	51	58	40.6
UNIVERSITY TOTAL	497	521	532	503	481	506.8



¹ DATA SOURCE: Registrar's Office. Information as of December 1, 2011.

² Total adjusted for students with double majors

25. Percentage of Graduates by Academic Division 2007 – 2011¹											
COLLEGE DIVISION	2006–07		2007–08		2008–09		2009–10		2010–11		
	#	%	#	%	#	%	#	%	#	%	
College of Arts and Sciences											
Business	34	6.8%	26	5.0%	35	6.6%	28	5.6%	41	8.5%	
Education/H&PE²	4	0.8%	5	1.0%	6	1.1%	7	1.4%	5	1.0%	
Arts & Humanities	42	8.5%	40	7.7%	34	6.4%	41	8.2%	42	8.7%	
Nat. Sci. & Math	199	40.0%	195	37.4%	197	37.0%	162	32.2%	162	33.7%	
Social Sciences	71	14.3%	78	15.0%	79	14.8%	46	9.1%	54	11.2%	
TOTAL³	347	69.8%	338	64.9%	350	65.8%	279	55.5%	301	62.6%	
College of Pharmacy											
TOTAL	122	24.5%	152	29.2%	147	27.6%	173	34.4%	122	25.4%	
Graduate School											
TOTAL	28	5.6%	31	6.0%	35	6.6%	51	10.1%	58	12.1%	
UNIVERSITY TOTAL	497		521		532		503		481		



¹ DATA SOURCE: Registrar's Office. Information as of December 1, 2011. Double majors are included only once in the totals, hence percentages may not total 100%.

² Secondary Education majors are included both in Education *and* in the department of their major discipline, but are counted only once in the Total.

³ A&S Total adjusted for students with double majors.

**26a. College of Arts & Sciences -
Undergraduate Degree Completion
Ethnicity/Gender by Academic Discipline
2010 – 2011**

Race/Ethnicity	Gender	Division of Business	Division of Education	Fine Arts & Humanities	Natural Sciences & Math	Social Sciences	TOTAL
Black or African American	Male	14	0	7	29	7	57
	Female	23	5	32	85	42	184
	Total	37	5	39	114	49	241
White	Male	0	0	0	1	0	1
	Female	0	0	0	2	0	2
	Total	0	0	0	3	0	3
Asian	Male	0	0	0	9	0	9
	Female	1	0	2	22	0	25
	Total	1	0	2	31	0	34
Amer. Indian or Alaskan Native	Male	0	0	0	0	0	0
	Female	1	0	0	0	0	1
	Total	1	0	0	0	0	1
Native Hawaiian or Other Pacific Islander	Male	0	0	0	0	0	0
	Female	0	0	0	0	0	0
	Total	0	0	0	0	0	0
Hispanic	Male	0	0	0	3	0	3
	Female	1	0	0	2	1	4
	Total	1	0	0	5	1	7
Two or More Races	Male	0	0	0	0	0	0
	Female	1	0	0	4	2	7
	Total	1	0	0	4	2	7
Non Resident Alien	Male	0	0	0	1	0	1
	Female	0	0	0	2	1	3
	Total	0	0	0	3	1	4
Race/Ethnicity Unknown	Male	0	0	1	1	0	2
	Female	0	0	0	1	1	2
	Total	0	0	1	2	1	4
GRAND TOTAL¹	Male	14	0	8	44	7	73
	Female	27	5	34	118	47	228
	Total	41	5	42	162	54	301

¹ Secondary Education majors are included both in Education *and* in the department of their major discipline, but are counted only once in the Total.

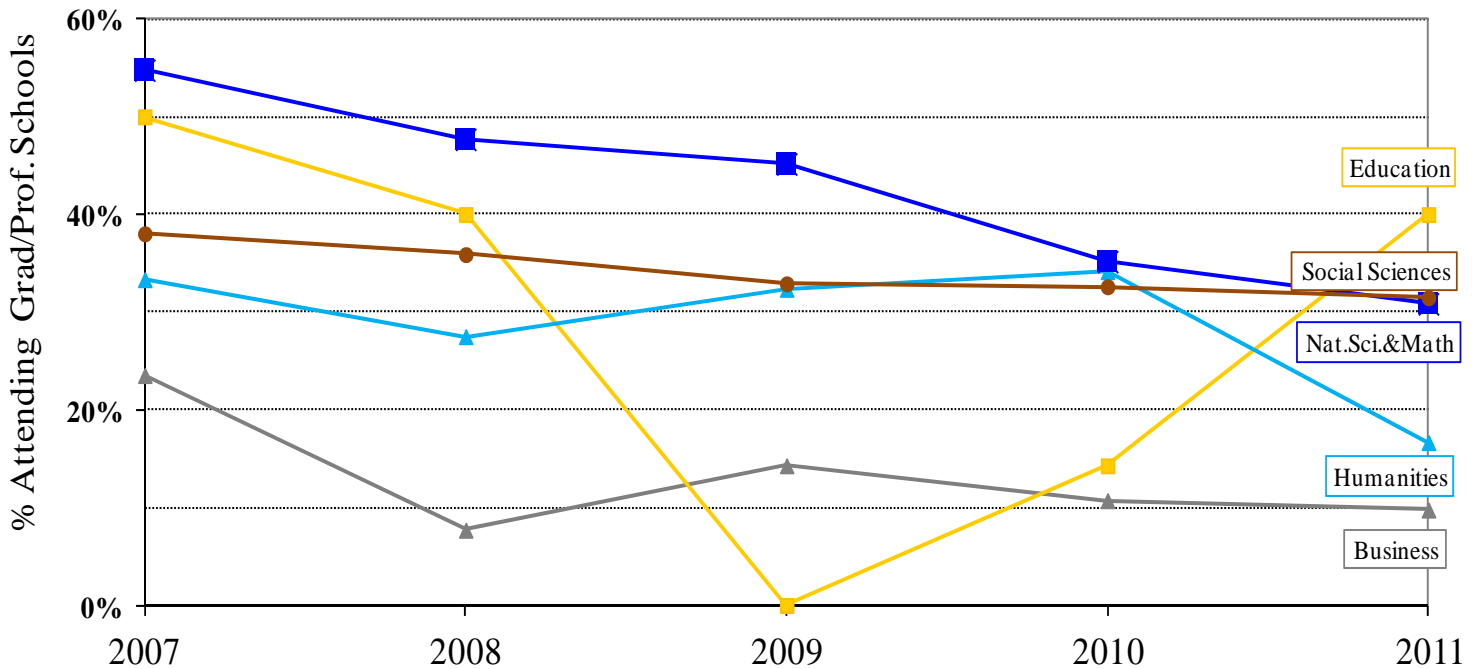
**26b. First Professional and Masters Degree Completion
by Ethnicity/Gender
2010 – 2011**

Race/Ethnicity	Gender	College of Pharmacy	Graduate School		
		TOTAL First-Professional Degrees	Division of Education (Graduate)	Institute for Black Catholic Studies	TOTAL Masters Degrees
Black or African American	Male	10	12	0	12
	Female	44	35	0	35
	Total	54	47	0	47
White	Male	3	2	0	2
	Female	20	5	0	5
	Total	23	7	0	7
Asian	Male	10	1	0	1
	Female	20	0	0	0
	Total	30	1	0	1
Amer. Indian or Alaskan Native	Male	0	0	0	0
	Female	0	0	0	0
	Total	0	0	0	0
Native Hawaiian or Other Pacific Islander	Male	1	0	0	0
	Female	1	0	0	0
	Total	2	0	0	0
Hispanic	Male	2	0	0	0
	Female	4	2	0	2
	Total	6	2	0	2
Two or More Races	Male	1	0	0	0
	Female	2	1	0	1
	Total	3	1	0	1
Non Resident Alien	Male	1	0	0	0
	Female	1	0	0	0
	Total	2	0	0	0
Race/Ethnicity Unknown	Male	1	0	0	0
	Female	1	0	0	0
	Total	2	0	0	0
GRAND TOTAL	Male	29	15	0	15
	Female	93	43	0	43
	Total	122	58	0	58

**27. Percentage of Graduates
Attending Graduate/Professional School
College of Arts & Sciences
2007 – 2011¹**

ACADEMIC DIVISION	2007		2008		2009		2010		2011	
	Ratio	%	Ratio	%	Ratio	%	Ratio	%	Ratio	%
Business	8/34	23.5%	2/26	7.7%	5/35	14.3%	3/28	10.7%	4/41	9.8%
Educ./H&PE ²	2/4	50.0%	2/5	40.0%	0/6	0.0%	1/7	14.3%	2/5	40.0%
Humanities	14/42	33.3%	11/40	27.5%	11/34	32.4%	14/41	34.1%	7/42	16.7%
Nat.Sci.& Math	109/199	54.8%	93/195	47.7%	89/197	45.2%	57/162	35.2%	50/162	30.9%
Social Sci.	27/71	38.0%	28/78	35.9%	26/79	32.9%	15/46	32.6%	17/54	31.5%
TOTAL³	157/347	45.2%	132/338	39.1%	130/350	37.1%	87/279	31.2%	78/301	25.9%

**Graduate & Professional Schools Attendance by Academic Division
2007–2011**



¹ DATA SOURCE: National Student Clearinghouse. Information as of December 1, 2011.

² Secondary Education majors are included both in Education *and* in the department of their major discipline, but are counted only once in the Total.

³ Students with double majors are counted in each major division, but only once in the total.

**28. Number of Graduates
Attending Graduate/Professional Schools
College of Arts & Sciences — by Major
2007 – 2011¹**

ACADEMIC DIVISION MAJOR	2006–07		2007–08		2008–09		2009–10		2010–11	
	# of grads	# in G/P Sch	# of grads	# in G/P Sch	# of grads	# in G/P Sch	# of grads	# in G/P Sch	# of grads	# in G/P Sch
Business										
Accounting	10	5	9	1	8	1	16	3	12	2
B.A. - Marketing	13	2	8	0	10	0	3	0	5	1
B.A. – Finance	1	0	3	1	5	2	2	0	9	1
B.A. - Management	10	1	6	0	11	2	7	0	15	0
B.A. - Mgt. Science ²	0	0	0	0	1	0	—	—	0	0
Business Total	34	8	26	2	35	5	28	3	41	4
Education										
Early Childhood ²	1	0	—	—	—	—	—	—	—	—
Elementary Ed. (1–6) ²	3	2	1	1	—	—	—	—	1	0
Elementary Ed. (1–5)	—	—	—	—	2	0	2	0	1	0
Middle Ed. (4–8)	—	—	1	0	1	0	0	0	0	0
Special Education	0	0	0	0	3	0	1	0	0	0
Health & Phys. Ed. ²	0	0	2	1	—	—	—	—	—	—
Secondary Education ³	0	0	1	0	0	0	4	1	3	2
Education Total	4	2	5	2	6	0	7	1	5	2
Humanities										
Art	3	1	3	0	2	0	1	0	4	0
Art Education ³	0	0	0	0	0	0	0	0	0	0
English	4	3	6	1	7	3	8	5	8	2
English/English Ed. ³	0	0	0	0	0	0	0	0	3	2
French	0	0	0	0	0	0	1	0	1	0
Spanish	1	1	5	3	3	3	3	2	0	0
Spanish Education ³	0	0	1	0	0	0	0	0	0	0

**28. Number of Graduates
Attending Graduate/Professional Schools
College of Arts & Sciences — by Major
2007 – 2011¹, cont'd.**

ACADEMIC DIVISION MAJOR	2006–07		2007–08		2008–09		2009–10		2010–11	
	# of grads	# in G/P Sch	# of grads	# in G/P Sch	# of grads	# in G/P Sch	# of grads	# in G/P Sch	# of grads	# in G/P Sch
Humanities (continued)										
Mass Communications	19	3	15	3	15	2	11	3	14	2
Speech Pathology	8	4	7	4	1	0	10	1	8	0
Music Liberal Arts	2	0	2	0	1	1	3	2	2	0
Music Performance	3	1	0	0	2	0	1	0	1	1
Music Education ³	0	0	0	0	0	0	2	0	0	0
Philosophy	1	1	1	0	1	0	1	0	1	0
Theology	1	0	0	0	2	2	1	1	0	0
Humanities Total	42	14	40	11	34	11	41	14	42	7
Social Sciences										
History	1	1	7	0	5	1	2	1	4	3
Social Studies Educ. ³	0	0	0	0	0	0	0	0	0	0
Political Science	14	6	16	7	15	3	11	3	6	3
Polit. Science Pre-Law	1	0	4	1	1	0	1	0	2	0
Psychology	37	13	33	12	29	11	21	8	28	6
Psychology Pre-Med	11	6	15	6	23	10	8	2	11	5
Sociology	7	1	4	2	6	1	3	1	3	0
Social Sci. Total	71	27	78	28	79	26	46	15	54	17
Natural Sciences & Math										
Biology	17	10	30	10	27	13	27	12	20	7
Biology Pre-Med	123	66	102	47	107	52	78	26	84	28
Microbiology	1	0	4	3	0	0	1	0	0	0
Science Educ.–Biol. ³	0	0	0	0	0	0	1	0	0	0
Chemistry	13	5	13	6	10	2	15	5	24	4
Chemistry ACS	3	2	2	1	2	1	0	0	1	1
Chemistry Pre-Med	22	15	24	17	21	12	7	2	12	4
Chemistry Pre-Pharm	—	—	7	6	18	7	19	6	17	5

**28. Number of Graduates
Attending Graduate/Professional Schools
College of Arts & Sciences — by Major
2007 – 2011¹, *cont'd.***

ACADEMIC DIVISION MAJOR	2006–07		2007–08		2008–09		2009–10		2010–11	
	# of grads	# in G/P Sch	# of grads	# in G/P Sch	# of grads	# in G/P Sch	# of grads	# in G/P Sch	# of grads	# in G/P Sch
Natural Sciences & Math (continued)										
Biochemistry	5	4	2	1	2	1	1	0	0	0
Science Educ.–Chem. ³	0	0	0	0	0	0	1	1	0	0
Computer Science	2	0	3	2	4	3	3	0	1	0
Computer Info. Sys.	1	0	0	0	2	0	0	0	0	0
Computer Engineering ²	4	1	2	0	—	—	—	—	—	—
Mathematics	0	0	2	0	1	0	2	1	1	0
Mathematics Educ. ³	0	0	0	0	0	0	0	0	0	0
Physics	8	6	5	1	5	0	7	4	2	1
Dual Degree Engr. ⁴	6	0	3	0	3	0	3	0	0	0
Nat. Sci. Total	199	109	195	93	197	89	162	57	162	50
A&S Total⁵	347	157	338	132	350	130	279	87	301	78

¹ DATA SOURCE: National Student Clearinghouse. Information as of December 1, 2011.

² Program discontinued.

³ Secondary Education majors are included both in Education *and* in the department of their major discipline, but are counted only once in the Total.

⁴ Engineering degree received at other university. Students may or may not receive degree from Xavier. Dual Degree Engineering is not reflected in totals.

⁵ Students with double majors are counted only once in the Division Total and once in the A&S Total. Students with double majors in the same department are shown once only.

**29. Number of Graduates
attending Professional/Graduate School
during Fall 2011¹**

ACADEMIC DIVISION	Business	Education	Humanities	Social Sciences	Nat. Sci. & Math	Unduplicated Total²
Professional School						
Medical	—	—	—	1	13	14
Dental	—	—	—	—	4	4
Public Health	—	—	—	2	—	2
Optometry	—	—	—	—	1	1
Osteopathy	—	—	—	—	—	0
Law	—	—	1	3	—	4
Pharmacy	—	—	—	—	5	5
Chiropractic	—	—	—	—	—	0
Veterinary	—	—	—	—	1	1
Graduate School						
Business	1	—	—	—	—	1
Engineering	—	—	—	—	—	0
Graduate Studies	3	—	6	11	22	42
Post Bacc	—	—	—	—	4	4
TOTAL (by division)	4	0	7	17	50	78

¹ DATA SOURCE: National Student Clearinghouse. Information as of December 1, 2011.

² Students with double majors are included in each division and in the total by division, but only once in the unduplicated total. Secondary Education majors are included both in Education *and* in the division of their major discipline, but are counted only once in the Unduplicated Total. Grand Total (bottom right) is the sum of the Unduplicated Total column.

30. Number of Graduates by Major Graduate Program¹, 2007 – 2011					
ACADEMIC DIVISION	2006–07	2007–08	2008–09	2009–10	2010–11
Educational Leadership					
Administration & Supervision ²	1	0	—	—	—
School Principalship ²	3	2	—	—	—
Supervision of Instruction ²	0	0	—	—	—
Educational Leadership ³	6	1	10	16	12
Total Adm. & Supervision	10	3	10	16	12
Curriculum & Instruction					
Special Education ²	0	0	—	—	—
Early Childhood Education	2	2	1	1	0
Elementary Education	0	3	1	0	0
Secondary Education	1	0	2	1	0
Reading Specialist	0	0	2	1	3
Total Curr. & Instruction	3	5	6	3	3
Master of Arts in Teaching					
Elementary Education 1–6 ²	2	2	—	—	—
Elementary Education 1–5	—	—	3	10	13
Secondary Ed.–Biology	0	0	4	2	1
Secondary Ed.–Chemistry	0	0	1	0	1
Secondary Ed.–English	1	0	1	2	4
Secondary Ed.–Frng Language	0	0	1	0	1
Secondary Ed.–History	0	0	0	0	0
Secondary Ed.–Mathematics	0	2	3	0	3
Secondary Ed.–Social Studies	0	0	0	1	1
Special Educ. Mild/Moderate	3	5	3	11	9
Total MAT	6	9	16	26	33

30. Number of Graduates by Major Graduate Program¹ 2007 – 2011, <i>cont'd.</i>					
ACADEMIC DIVISION	2006–07	2007–08	2008–09	2009–10	2010–11
Guidance & Counseling					
Mental Health Counseling ³	4	2	0	0	1
School Counseling	2	1	0	1	1
Community Counseling	3	8	0	2	8
Total Guidance & Counseling	9	11	0	3	10
Black Catholic Studies					
Total Black Catholic Studies	0	3	3	3	0
TOTAL GRADUATE SCHOOL	28	31	35	51	58

¹ DATA SOURCE: Office of the Registrar

² Discontinued program.

³ **Educational Leadership** is the new major for *Supervision of Instruction, School Principalship, Elementary School Principalship, and Secondary School Principalship.*