

II. Student Body

The majority of Xavier students are enrolled in the College of Arts and Sciences as full-time students, (See Tables 7 – 8). With 38 undergraduate majors ranging from art to biology to political science to theology, 2,573 of the enrolled 3,399 students this fall, or 75.6. %, were undergraduate students in A&S. Xavier’s Graduate programs, within the College of Arts & Sciences, focuses on the Counseling, Education and Theology disciplines. This fall there were 183 students enrolled in its programs. More specifically, there are five graduate program areas in the Division of Education and Institute for Black Catholic Studies. Xavier’s College of Pharmacy offers the Pharm. D. (Doctor of Pharmacy) degree. With the only Pharmacy school in southern Louisiana, the Pharmacy program currently enrolls 623 students. The remaining student body is made up of students from Concurrent Admissions students (qualified high school students who are advancing their college careers) and Consortium students (students at local universities who are taking a limited number of courses at Xavier). Although Xavier is open to students of all racial, ethnic and religious backgrounds, the University is a historically Black Catholic institution, and the ethnicity of its student body reflects that history. As shown in Table 9, 73.8% of the student body is African–American, 10.9% is Asian, 6.1% is white, and 2.1% is Hispanic.

Tables 10 – 13 indicate specific enrollment distributions for the undergraduate disciplines/majors for the College of Arts & Sciences. Tables 14 – 19 indicate specific enrollment (student level, race/ethnicity, and enrollment status) distributions by disciplines/majors for the Division of Education, College of Pharmacy, and the Graduate programs, respectively.

Xavier’s students come principally from Louisiana; 57.1% of the student body is from this state. Other states with large representation include Texas (7.7%), Georgia (5.2%), California (4.4%), Mississippi (3.3%), Illinois (3%), and the District of Columbia/Maryland/Virginia area (2.1%). Non-resident aliens account for 2.8% of the student population. Enrollment origins from 2007 to the present are shown in Table 20. Table 21 shows the representative religious denominations of the student population.

**7. Distribution of Student Headcount
Fall Semester 2011¹**

COLLEGE CLASSIFICATION	Student Total	Full-Time Males		Full-Time Females		Part-Time Males		Part-Time Females	
		#	% ²	#	% ²	#	% ²	#	% ²
Arts & Sciences									
Freshmen ³	1,014	267	26.3%	736	72.6%	7	0.7%	4	0.4%
Sophomores	646	198	30.7%	439	68.0%	5	0.8%	4	0.6%
Juniors	458	129	28.2%	319	69.7%	1	0.2%	9	2.0%
Seniors	439	98	22.3%	293	66.7%	20	4.6%	28	6.4%
Post-Bacc./Unclass.	16	1	6.3%	1	6.3%	4	25.0%	10	62.5%
Graduate Students	183	25	13.7%	104	56.8%	9	4.9%	45	24.6%
Undergrad. Total	2,573	693	26.9%	1,788	69.5%	37	1.4%	55	2.1%
TOTAL	2,756	718	26.1%	1892	68.7%	46	1.7%	100	3.6%
Pharmacy									
P1 - 1st yr.	157	58	36.9%	96	61.1%	2	1.3%	1	0.6%
P2 - 2nd yr.	128	46	35.9%	82	64.1%	0	0.0%	0	0.0%
P3 - 3rd yr.	167	40	24.0%	100	59.9%	8	4.8%	19	11.4%
P4 - 4th yr.	171	50	29.2%	102	59.6%	7	4.1%	12	7.0%
Post Bacc. R _x . D.	0	0	0%	0	0%	0	0%	0	0%
TOTAL	623	194	31.1%	380	61.0%	17	2.7%	32	5.1%
Graduate Program									
Graduate Students	182	25	13.7%	104	57.1%	8	4.4%	45	24.7%
Post Grad. Stud.	1	0	0.0%	0	0.0%	1	100.0%	0	0.0%
TOTAL	183	25	13.7%	104	56.8%	9	4.9%	45	24.6%
Other									
Concurrent Adm.	14	0	0.0%	0	0.0%	1	7.1%	13	92.9%
Consortium	6	0	0.0%	0	0.0%	3	50.0%	3	50.0%
TOTAL	20	0	0.0%	0	0.0%	4	20.0%	16	80.0%
GRAND TOTAL⁴	3,399	912	26.8%	2,272	66.8%	67	2.0%	148	4.4%

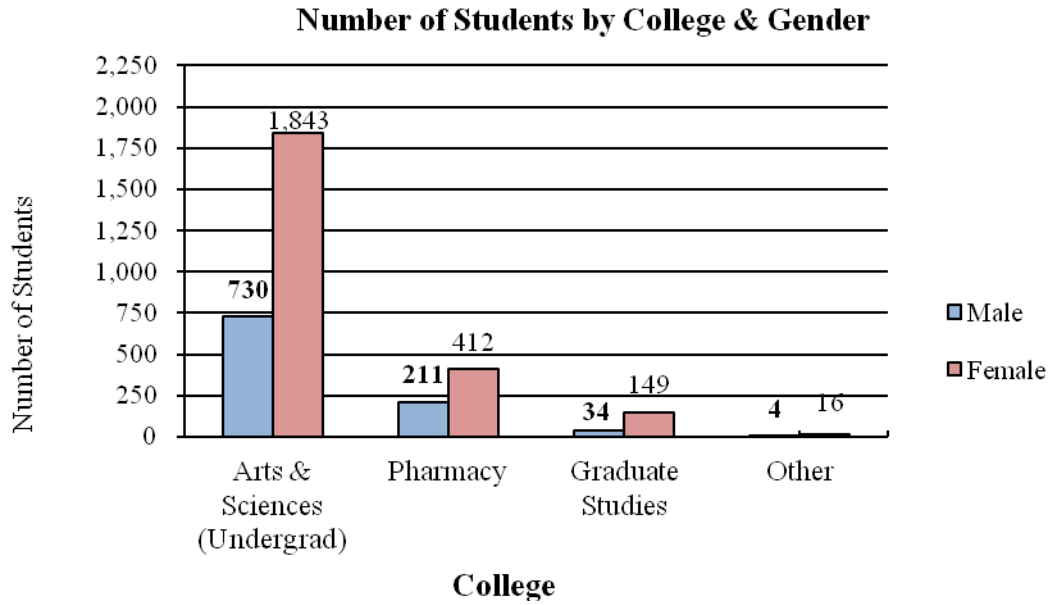
¹ DATA SOURCE: Registrar's Office

² The denominator for each percentage is the *Student Total* for the row in which that percentage appears.

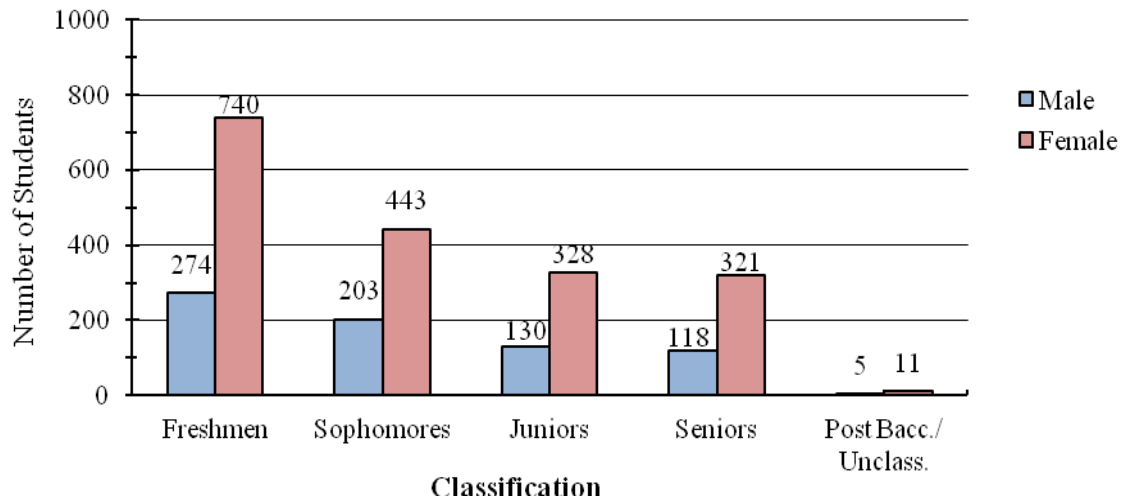
³ Freshmen total includes all new, continuing, readmitted, and two new first-time freshmen with sophomore class level status and one with junior class level status.

⁴ Graduate students in the College of Arts & Sciences are included only once in the total headcount.

7. Distribution of Student Headcount Fall Semester 2011, *cont.*

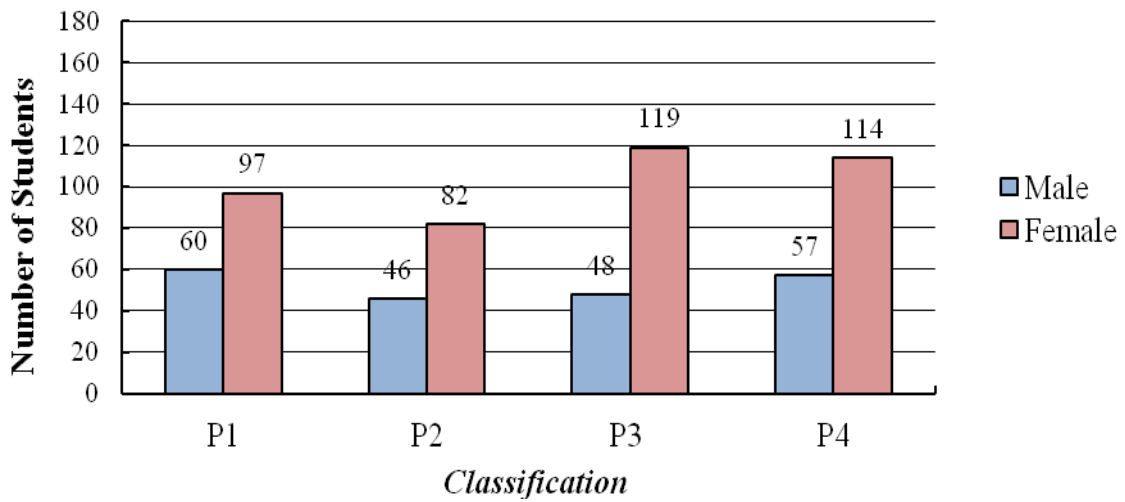


Undergraduate CAS Students by Classification and Gender

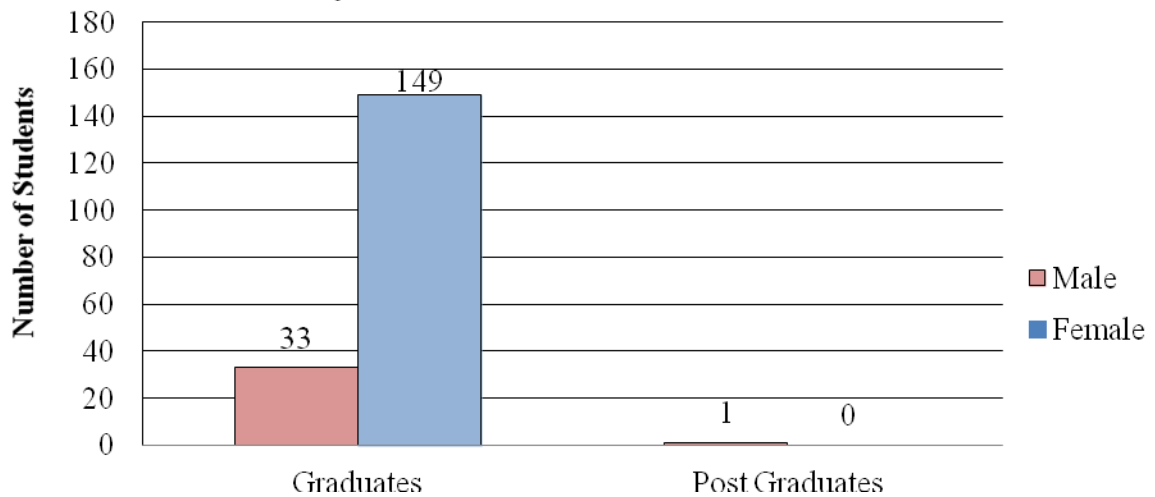


**7. Distribution of Student Headcount
 Fall Semester 2011, cont.**

Pharmacy Students by Classification And Gender



**Graduate Studies
 by Classification and Gender**



8a. Undergraduate Student Enrollment: College of Arts and Sciences Ethnicity/Gender by Student Level and Full-time Enrollment Status Fall Semester 2011¹									
COLLEGE OF ARTS & SCIENCES		First- Time Fresh.	Cont. Fresh.	Soph.	Juniors	Seniors	Post- Bacc./ Uncl.	Other ²	TOTAL
ETHNICITY	GENDER	FT	FT	FT	FT	FT	FT	FT	FT
Black/ African American	Male	147	56	143	102	76	0	0	525
	Female	490	140	370	264	251	0	0	1518
	Total	637	196	513	366	327	0	0	2043
White (Non- Hispanic)	Male	3	1	6	4	1	0	0	15
	Female	13	1	14	5	5	0	0	38
	Total	16	2	20	9	6	0	0	53
Asian	Male	27	5	32	14	9	0	0	88
	Female	38	4	27	24	18	0	0	111
	Total	65	9	59	38	27	0	0	199
Hispanic	Male	5	2	4	3	3	0	0	17
	Female	10	7	8	9	4	0	0	38
	Total	15	9	12	12	7	0	0	55
Native Hawaiian or Other Pacific Islander	Male	0	0	0	0	0	0	0	0
	Female	0	0	0	0	0	0	0	0
	Total	0	0	0	0	0	0	0	0
Two or More Races	Male	6	1	4	3	7	0	0	21
	Female	25	3	7	7	9	0	0	51
	Total	31	4	11	10	16	0	0	72
American Indian or Alaskan Native	Male	1	0	0	0	0	0	0	1
	Female	0	0	1	1	0	0	0	2
	Total	1	0	1	1	0	0	0	3
Non-Resident Alien	Male	4	3	8	3	2	0	0	20
	Female	1	2	4	5	3	0	0	15
	Total	5	5	12	8	5	0	0	35
Ethnicity Unknown	Male	7	0	1	0	0	0	0	8
	Female	7	2	3	3	3	0	0	18
	Total	0	2	4	3	3	0	0	26
TOTALS	Male	200	68	200	129	98	0	0	695
	Female	584	159	437	318	293	0	0	1791
	Total	784	227	637	447	391	0	0	2486

¹ DATA SOURCE: Registrar's Office.

² Other includes Concurrent Admissions and Consortium students.

8b. Undergraduate Student Enrollment: College of Arts and Sciences Ethnicity/Gender by Student Level and Part-time Enrollment Status Fall Semester 2011 ¹									
COLLEGE OF ARTS & SCIENCES		First- Time Fresh.	Cont. Fresh.	Soph.	Juniors	Seniors	Post- Bacc./ Uncl.	Other ²	TOTAL
RACE/ETH.	GENDER	PT	PT	PT	PT	PT	PT	PT	PT
Black/ African American	Male	1	2	2	1	14	2	3	25
	Female	1	10	3	4	22	3	13	56
	Total	2	12	5	5	36	5	16	81
White	Male	0	0	0	0	2	1	1	4
	Female	0	2	1	3	2	0	1	9
	Total	0	2	1	3	4	1	2	13
Asian	Male	0	0	2	0	4	0	0	6
	Female	0	0	1	0	0	0	1	2
	Total	0	0	3	0	4	0	1	8
Hispanic	Male	0	0	0	0	0	0	0	0
	Female	0	0	1	0	3	0	0	4
	Total	0	0	1	0	3	0	0	4
Native Hawaiian or Other Pacific Islander	Male	0	0	0	0	0	0	0	0
	Female	0	0	0	0	0	0	0	0
	Total	0	0	0	0	0	0	0	0
Two or More Races	Male	0	0	0	0	0	0	0	0
	Female	0	0	0	1	1	0	1	3
	Total	0	0	0	1	1	0	1	3
American Indian or Alaskan Native	Male	0	0	0	0	0	0	0	0
	Female	0	0	0	0	0	0	0	0
	Total	0	0	0	0	0	0	0	0
Non-Resident Alien	Male	0	1	0	0	0	1	0	2
	Female	0	0	0	0	0	0	0	0
	Total	0	1	0	0	0	1	0	2
Ethnicity Unknown	Male	0	0	0	0	0	0	0	0
	Female	0	0	0	1	0	0	0	1
	Total	0	0	0	1	0	0	0	1
TOTALS	Male	1	3	4	1	20	4	4	37
	Female	1	12	6	9	28	3	16	75
	Total	2	15	10	10	48	7	20	112

¹ DATA SOURCE: Registrar's Office.

² Other includes Concurrent Admissions and Consortium students.

**9. Headcount Analysis by Gender and Racial/Ethnic Status
Fall Semester 2011¹**

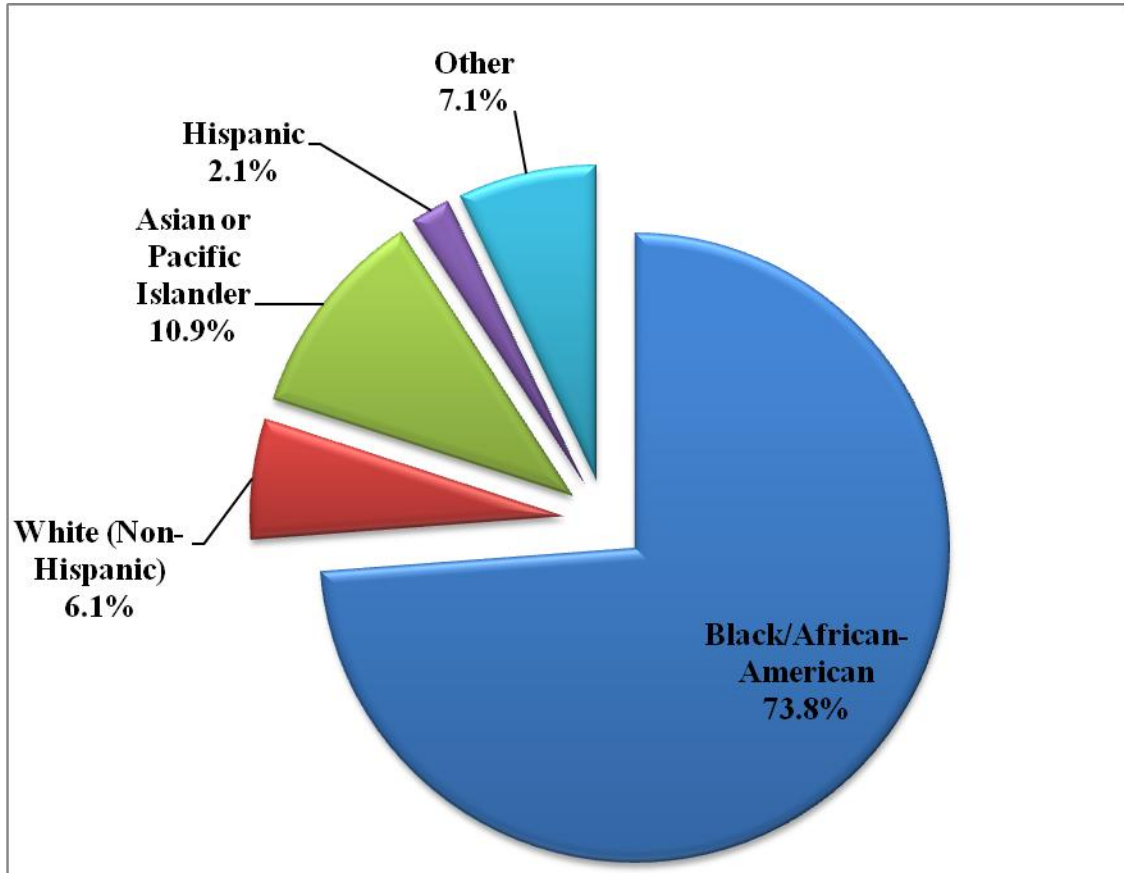
		College of Arts & Sciences		College of Pharmacy		Other ²	Total Students	% ³
RACE/ ETHNIC GROUP	Gender	Under-grad.	Div. of Educ. (Grad.)	P1	P2-P4			
Black/ or African American	Male	546	23	14	54	3	640	18.8%
	Female	1,558	110	33	155	13	1,869	55.0%
	Total	2,104	133	47	209	16	2,509	73.8%
White	Male	18	7	8	21	1	55	1.6%
	Female	46	26	27	54	1	154	4.5%
	Total	64	33	35	75	2	209	6.1%
Asian	Male	93	1	27	44	0	165	4.9%
	Female	112	1	25	65	1	204	6.0%
	Total	205	2	52	109	1	369	10.9%
Hispanic	Male	17	0	2	3	0	22	0.6%
	Female	42	3	1	2	0	48	1.4%
	Total	59	3	3	5	0	70	2.1%
Native Hawaiian or Other Pacific Islander	Male	0	0	0	1	0	1	0.0%
	Female	0	1	0	0	0	1	0.0%
	Total	0	1	0	1	0	2	0.1%
American Indian Alaskan Native	Male	1	0	0	0	0	1	0.0%
	Female	2	0	1	0	0	3	0.1%
	Total	3	0	1	0	0	4	0.1%
Two or More Races	Male	21	0	0	10	0	31	0.9%
	Female	53	5	1	11	1	71	2.1%
	Total	74	5	1	21	1	102	3.0%
Non-Resident Alien	Male	22	2	8	17	0	49	1.4%
	Female	15	0	8	24	0	47	1.4%
	Total	37	2	16	41	0	96	2.8%
Ethnicity Unknown	Male	8	1	1	1	0	11	0.3%
	Female	19	3	1	4	0	27	0.8%
	Total	27	4	2	5	0	38	1.1%
GRAND TOTAL	Male	726	34	60	151	4	975	28.7%
	Female	1847	149	97	315	16	2424	71.3%
	Total	2,573	183	157	466	20	3,399	100%

¹ DATA SOURCE: Registrar's Office

² Includes Consortium and Concurrent Admissions students.

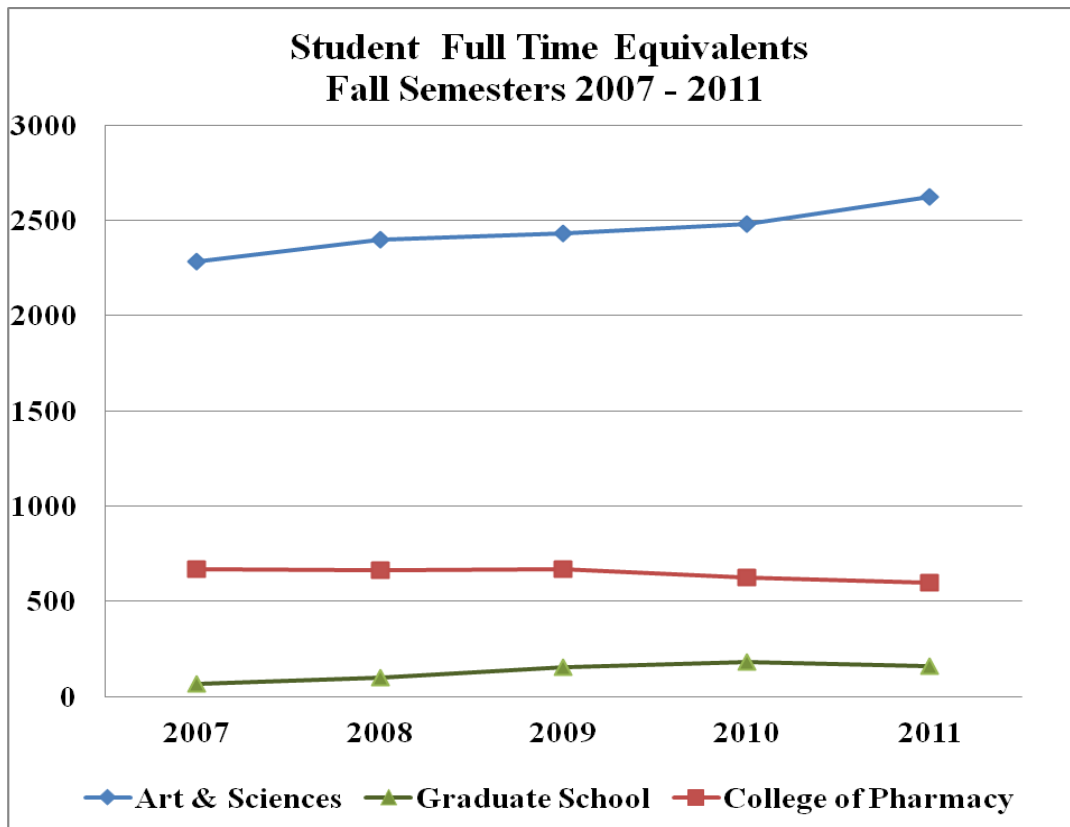
³ Percentages are based on Grand Total. Percentages may not add up to 100% due to rounding.

9. Headcount Analysis by Racial/Ethnic Status
Fall Semester 2011, *cont.*¹



¹ Other includes self reported Race/Ethnicities: American Indian Alaskan Native, Native Hawaiian or Other Pacific Islander, Two or More Races, Non-Resident Alien, and Unknown/Not reported.

10. Student Full-Time Equivalent (FTE) by Gender Fall Semesters 2007 - 2011¹						
COLLEGE	GENDER	FTE FALL 2007	FTE FALL 2008	FTE FALL 2009	FTE FALL 2010	FTE FALL 2011
Arts & Sciences	Male	636	666	683	697	800
	Female	1,647	1,731	1,749	1,784	1,825
	Total	2,283	2,397	2,432	2,481	2,625
College of Pharmacy	Male	182	205	207	198	214
	Female	487	459	463	427	381
	Total	669	664	670	625	595
Graduate Program	Male	18	21	37	38	30
	Female	48	77	119	142	128
	Total	66	98	156	180	158
GRAND TOTALS	Male	836	892	927	933	1,044
	Female	2,182	2,267	2,331	2,353	2,334
	Total	3,018	3,159	3,258	3,286	3,378



¹ DATA SOURCE: Registrar's Office

11. Enrollment Analysis by Academic Discipline Fall Semesters 2007 - 2011¹							
College	Academic Division	2007	2008	2009	2010	2011	
Arts & Sciences	A&S Non Degree	5	7	10	9	15	
	Concurrent Admission	6	19	13	18	14	
	Division of Business	171	201	190	201	194	
	Office of Acad. Enhancement ²	120	95	177	143	134	
	Humanities	188	209	230	231	245	
	Natural Sciences and Math	1,484	1,548	1,516	1,542	1,566	
	Social Sciences	330	347	331	384	396	
	Division of Education						
	Undergraduate ³	51	55	48	55	59	
	<i>Secondary Education Majors</i>	(22)	(22)	(24)	(28)	(25)	
	Graduate Program	87	111	173	207	183	
	Transient Student	1	0	0	0	1	
	<i>Double Majors</i>	(13)	(9)	(8)	(10)	(12)	
Total A & S⁴	2,408	2,561	2,657	2,752	2,770		
College Of Pharmacy Total		679	671	678	635	623	
Consortium	Dillard Consortium	0	1	1	1	2	
	Loyola Consortium	1	3	2	3	4	
	Notre Dame Consortium	0	0	0	0	0	
	Tulane Consortium	0	0	1	0	0	
	Total	1	4	4	4	6	
GRAND TOTAL		3,088	3,236	3,338	3,391	3,399	

¹ DATA SOURCE: Registrar's Office

² Deciding majors are now academically advised by the Student Academic Success Office.

³ Secondary Education majors are counted within their disciplines and in the undergraduate Division of Education.

⁴ Grand Total reflects total student headcount. Double majors are included in each of their respective disciplines but not in the Total A&S.

**12. Undergraduate Student Enrollment -
College of Arts and Sciences
Ethnicity/Gender by Academic Discipline
Fall Semester 2011**

ARTS AND SCIENCES		Division of Business		Div. of Educ.		Fine Arts & Human.		Nat. Sciences & Math (includes Pre-Pharm.)		Social Sciences		Deciding		Other	
		FT	PT	FT	PT	FT	PT	FT	PT	FT	PT	FT	PT	FT	PT
Ethnicity	Gender	FT	PT	FT	PT	FT	PT	FT	PT	FT	PT	FT	PT	FT	PT
Black or Afr. Amer.	Male	73	2	8	1	60	2	284	10	70	2	36	3	0	5
	Female	97	7	42	0	153	3	895	17	277	6	71	2	1	21
	Total	170	9	50	1	213	5	1179	27	347	8	107	5	1	26
White	Male	3	0	0	0	1	0	10	2	1	0	0	0	0	2
	Female	0	0	1	0	2	0	34	6	1	1	0	0	0	2
	Total	3	0	1	0	3	0	44	8	2	1	0	0	0	4
Asian	Male	1	0	0	0	1	0	81	6	1	0	3	0	0	0
	Female	1	0	1	0	2	0	103	0	3	0	1	0	0	2
	Total	2	0	1	0	3	0	184	6	4	0	4	0	0	2
Hispanic	Male	1	0	0	0	1	0	13	0	0	0	2	0	0	0
	Female	2	0	2	0	4	1	20	1	10	1	4	1	0	0
	Total	3	0	2	0	5	1	33	1	10	1	6	1	0	0
Amer. Ind. Alaskan Nat.	Male	0	0	0	0	0	0	1	0	0	0	0	0	0	0
	Female	0	0	0	0	1	0	1	0	0	0	0	0	0	0
	Total	0	0	0	0	1	0	2	0	0	0	0	0	0	0
Nat. Haw. or Other Pac. Isl.	Male	0	0	0	0	0	0	0	0	0	0	0	0	0	0
	Female	0	0	0	0	0	0	0	0	0	0	0	0	0	0
	Total	0	0	0	0	0	0	0	0	0	0	0	0	0	0
Two or More Races	Male	2	0	0	0	1	0	11	0	5	0	2	0	0	0
	Female	1	0	2	0	5	0	30	2	11	0	4	0	0	1
	Total	3	0	2	0	6	0	41	2	16	0	6	0	0	1
Non Resident Alien	Male	3	0	1	0	1	0	11	0	1	0	3	1	1	1
	Female	1	0	0	0	1	0	10	0	4	0	0	0	0	0
	Total	4	0	1	0	2	0	21	0	5	0	3	1	1	1
Ethnicity Unknown	Male	0	0	1	0	3	0	5	0	0	0	0	0	0	0
	Female	0	0	0	0	3	0	12	1	2	0	1	0	0	0
	Total	0	0	1	0	6	0	17	1	2	0	1	0	0	0
Grand Total	Male	83	2	10	1	68	2	416	18	78	2	46	4	1	8
	Female	102	7	48	0	171	4	1,105	27	308	8	81	3	1	26
	Total	185	9	58	1	239	6	1,521	45	386	10	127	7	2	34
		194		59		245		1,566		396		134		36	

13. Distribution of Student Enrollment by Majors College of Arts & Sciences Undergraduate Fall Semesters 2007 -2011¹						
Discipline	Major	2007	2008	2009	2010	2011
Division of Business	Accounting	48	58	57	60	49
	Business – Finance	19	21	22	30	28
	Business – Management	59	79	76	70	77
	Business – Mgmt. Science	2	4	1	0	1
	Business – Marketing	41	37	30	29	25
	Business Administration	2	2	1	1	2
	Sales and Marketing	--	--	3	11	12
Business Total		171	201	190	201	194
Education	Early Childhood Education	0	0	0	0	0
	Early Childhood Educ.(PK-3)	1	1	1	0	0
	Education	1	0	1	--	--
	Elementary Education (1-5)	5	5	6	23	29
	Elementary Education (1-6)	10	17	13	0	1
	Health & Phys Education	3	3	1	--	--
	Middle School Education (4-8)	2	1	0	4	4
	Special Education	7	6	2	0	0
Education Total²		29	33	24	27	34
Humanities	Art	11	17	17	18	22
	Art Education	1	1	1	2	1
	English	28	32	45	39	43
	English / English Education	1	3	3	0	0
	English Education	2	4	8	8	5
	French	0	0	2	2	3
	Mass Communication	68	69	69	65	72
	Music	1	0	1	4	2
	Music Education Instrumental	8	7	7	6	5
	Music Education Voice	1	1	0	2	1
	Music Liberal Arts	8	12	12	12	11
	Music Performance Instrum.	6	2	2	7	9
	Music Performance Vocal	9	12	16	10	12

¹ DATA SOURCE: Registrar's Office.

² Secondary Education majors are listed within their discipline.

³ Grand Total does not equal the sum of the majors because students with double majors are included only once in the Arts & Sciences total.

**13. Distribution of Student Enrollment by Majors
College of Arts & Sciences Undergraduate,
Fall Semesters 2007-2011¹, cont.**

Discipline	Major	2007	2008	2009	2010	2011
Humanities cont.	Philosophy	4	2	6	7	9
	Spanish	9	6	7	9	12
	Spanish Education	1	0	0	0	1
	Speech Pathology	27	35	30	38	34
	Theology	3	6	4	2	3
Humanities Total		188	209	230	231	245
Natural Sciences and Math	Biochemistry	11	11	7	11	13
	Biology	79	63	63	86	81
	Biology Pre Med	653	688	646	642	673
	Biology Pre-Med 3+1	1	1	0	0	1
	Dual Deg. Biomed. Engr.	--	--	--	1	3
	Chemistry	42	36	44	71	55
	Chemistry ACS	5	5	3	5	10
	Chemistry Pre-Med	105	117	124	131	122
	Chemistry Pre-Pharmacy	524	558	544	515	508
	Dual Deg. Chem. Engr.	--	--	--	3	8
	Dual Deg. Comp Engr.	1	--	--	3	1
	Computer Info. Systems	3	6	3	4	4
	Computer Science	22	19	18	11	28
	Math Education	2	1	1	2	2
	Mathematics	6	4	8	11	14
	Microbiology	5	4	3	2	--
	Physics	10	11	11	3	9
	Dual Deg. Civil. Engr.	--	--	--	5	4
	Dual Deg. Elec. Engr.	--	--	--	5	5
	Dual Deg. Environ. Engr.	--	--	--	1	1
	Dual Deg. Mech.. Engr.	--	--	--	4	5
	Physics Pre-Engineering	11	21	37	21	13
	Science Educ. Biology	1	2	2	1	3
	Science Educ. Chemistry	2	1	2	3	3
Statistics	1	0	0	0	0	
Natural Sciences and Math Total		1,484	1,548	1,516	1,542	1,566

**13. Distribution of Student Enrollment by Majors
College of Arts & Sciences Undergraduate,
Fall Semesters 2007 -2011¹, cont.**

Discipline	Major	2007	2008	2009	2010	2011
Social Sciences	History	15	12	10	14	16
	Political Science	75	68	72	75	67
	Psychology	112	130	132	157	168
	Psychology Pre Med	110	105	97	101	99
	Social Studies Educ.	3	2	0	4	4
	Sociology	15	30	19	33	42
Social Sciences Total		330	347	330	384	396
Student Academic Success Office (Deciding)		120	95	177	143	127
Other	A&S Non Degree	5	7	10	9	15
	Concurrent Admiss.	6	19	13	18	14
	Transient Student	1	0	1	0	1
Other Total		12	26	24	27	30
Arts & Sciences Total³		2,321	2,450	2,479	2,545	2,580
Consortium	Dillard	0	1	1	1	2
	Loyola	1	3	2	3	4
	Notre Dame	0	0	0	0	0
	Tulane	0	0	1	0	0
Consortium Total		1	4	4	4	6
GRAND TOTAL³		2,322	2,454	2,483	2,549	2,586

14. Distribution of Student Enrollment by Majors Division of Education / Fall Semesters 2007 – 2011¹					
MAJOR/ CONCENTRATION	2007	2008	2009	2010	2011
UNDERGRADUATE					
Early Childhood Educ.(PK-3)	1	1	1	0	0
Elementary Education (1-5) ²	5	5	6	23	29
Education	1	0	1	0	0
Elementary Education (1-6)	10	17	13	0	1
Middle School Educ. (4-8)	2	1	0	4	4
Special Education (Mild / Moderate)	7	6	2	0	0
Health & P.E.	3	3	1	0	--
Secondary Education (total)	22	22	24	28	25
<i>Art</i>	<i>1</i>	<i>1</i>	<i>1</i>	<i>2</i>	<i>1</i>
<i>English / English Education</i>	<i>3</i>	<i>7</i>	<i>3</i>	<i>8</i>	<i>5</i>
<i>English Education</i>	<i>0</i>	<i>0</i>	<i>8</i>	<i>0</i>	<i>0</i>
<i>Spanish Education³</i>	<i>1</i>	<i>0</i>	<i>0</i>	<i>0</i>	<i>1</i>
<i>Music</i>	<i>9</i>	<i>8</i>	<i>7</i>	<i>8</i>	<i>6</i>
<i>Social Studies</i>	<i>3</i>	<i>2</i>	<i>0</i>	<i>4</i>	<i>4</i>
<i>Biology</i>	<i>1</i>	<i>2</i>	<i>2</i>	<i>1</i>	<i>3</i>
<i>Chemistry</i>	<i>2</i>	<i>1</i>	<i>2</i>	<i>3</i>	<i>3</i>
<i>Mathematics</i>	<i>2</i>	<i>1</i>	<i>1</i>	<i>2</i>	<i>2</i>
Undergraduate Total	51	55	48	55	59
GRADUATE					
Educ. Administration & Supervision					
Educational Leadership	19	24	31	48	50
School Principalship	1	1	1	0	0
Total Educ. Admin. & Supervision	20	25	32	48	50
Curriculum & Instruction					
Early Childhood Education	3	2	1	0	0
Elementary Education	3	1	0	0	0
Elementary Education (1-5)	--	--	1	0	0
Elementary Education (1-6)	--	--	2	0	0
Secondary Education	2	2	0	0	0
Reading Specialist	3	5	7	26	23
Special Education (Mild / Mod.)	2	1	1	0	0
Total Curriculum & Instruction	13	11	12	26	23

¹ DATA SOURCE: Registrar's Office

² Beginning in 2009, Elementary Education major listed as Elementary Education (1-5).

14. Distribution of Student Enrollment by Majors Division of Education / Fall Semesters 2007 – 2011, cont.					
MAJOR/AREA of CONCENTRATION	2007	2008	2009	2010	2011
Master of Arts in Teaching					
Elementary Education (1-5)	--	--	1	9	8
Elementary Education (1-6)	8	10	20	10	3
Secondary Education (total)	23	33	38	55	37
<i>Biology</i>	3	5	5	2	0
<i>Business</i>	1	1	1	1	0
<i>Chemistry</i>		2	1	4	2
<i>Computer Science</i>	1	0	0	0	0
<i>English</i>	0	4	8	11	4
<i>Foreign Language</i>	1	1	5	2	0
<i>History</i>	0	0	2	1	0
<i>Reading</i>	0	0	3	0	0
<i>Mathematics</i>	6	7	12	7	3
<i>Physics</i>	0	0	1	1	0
<i>Social Studies</i>	0	0	0	4	2
Special Education Elementary 1-5	--	--	--	3	5
Special Education MS 4-8 English	--	--	--	1	2
Special Education MS 4-8 Math	--	--	--	1	2
Special Education MS 4-8 Social Studies	--	--	--	--	1
Special Education Sec MS 6-12 Biology	--	--	--	--	1
Special Education Sec MS 6-12 English	--	--	--	--	3
Special Education Sec 6-12 Math	--	--	--	1	5
Special Education Sec 6-12 Spanish	--	--	--	1	2
Special Education Sec 6-12 Social Studies	--	--	--	--	2
Special Education (Mild / Moderate)	11	13	20	4	3
Total Master of Arts in Teaching	31	43	79	74	48
Counseling					
Community Counseling	14	17	24	24	22
School Counseling	4	7	17	23	24
Mental Health Counseling	2	1	1	1	11
Total Counseling	20	25	42	48	57
Graduate Studies Totals	84	104	165	196	178

14. Distribution of Student Enrollment by Majors Division of Education / Fall Semesters 2007 – 2011, cont.					
Miscellaneous	2007	2008	2009	2010	2011
Practitioner Special Ed. (Mild / Moderate)	1	1	1	3	0
Practitioner Sec. Ed. (Math & Science)	1	0	0	3	0
Plus Thirty	0	1	0	5	4
Non Degree Seeking/Transient	1	5	4	0	1
Graduate Total	87	111	173	207	183
TOTAL DIVISION OF EDUCATION	138	166	221	262	242

**15. Distribution of Student Enrollment by Majors
College of Pharmacy
Fall Semesters 2007 - 2011¹**

ACADEMIC DIVISION	2007	2008	2009	2010	2011
College of Pharmacy					
Pharm. D.	679	670	678	635	623
Post. Bacc. Pharm. D./ Non- Degree	0	1	0	0	0
TOTAL COLLEGE OF PHARMACY	679	671	678	635	623

¹ DATA SOURCE: Registrar's Office

16a. Fulltime Student Enrollment - College of Pharmacy Ethnicity/Gender by Student Level Fall Semester 2011¹															
COP LEVEL	1st Yr. R_X			2nd Yr. R_X			3rd Yr. R_X			4th Yr. R_X			TOTAL		
	Race/Ethnicity	M	F	T	M	F	T	M	F	T	M	F	T	M	F
Black or African American	14	32	46	14	45	59	14	50	64	15	38	53	57	165	222
White	8	27	35	10	23	33	4	17	21	6	12	18	28	79	107
Asian	25	25	50	15	20	35	15	24	39	13	19	32	68	88	156
American Indian Alaskan Native	0	1	1	0	0	0	0	0	0	0	0	0	0	1	1
Hispanic	2	1	3	2	1	3	0	0	0	0	1	1	4	3	7
Native Hawaiian or Other Pacific Islander	0	0	0	0	0	0	0	0	0	1	0	1	1	0	1
Two or More Races	0	1	1	4	6	10	2	1	3	3	3	6	9	11	20
Non - Resident Alien	8	8	16	5	6	11	4	7	11	8	8	16	25	29	54
Ethnicity Unknown	1	1	2	0	1	1	1	1	2	0	1	1	2	4	6
TOTALS	58	96	154	50	102	152	40	100	140	46	82	128	194	380	574

¹ DATA SOURCE: Registrar's Office

16b. Parttime Student Enrollment - College of Pharmacy Ethnicity/Gender by Student Level Fall Semester 2011¹															
COP LEVEL	1st Yr. R_X			2nd Yr. R_X			3rd Yr. R_X			4th Yr. R_X			TOTAL		
Race/Ethnicity	M	F	T	M	F	T	M	F	T	M	F	T	M	F	T
Black or African American	0	1	1	5	9	14	6	13	19	0	0	0	11	23	34
White	0	0	0	0	2	2	1	0	1	0	0	0	1	2	3
Asian	2	0	2	1	0	1	0	2	2	0	0	0	3	2	5
American Indian Alaskan Native	0	0	0	0	0	0	0	0	0	0	0	0	0	0	0
Hispanic	0	0	0	0	0	0	1	0	1	0	0	0	1	0	1
Native Hawaiian or Other Pacific Islander	0	0	0	0	0	0	0	0	0	0	0	0	0	0	0
Two or More Races	0	0	0	1	0	1	0	1	1	0	0	0	1	1	2
Non - Resident Alien	0	0	0	0	1	1	0	2	2	0	0	0	0	3	3
Ethnicity Unknown	0	0	0	0	0	0	0	1	1	0	0	0	0	1	1
TOTALS	2	1	3	7	12	19	8	19	27	0	0	0	17	32	49

¹ DATA SOURCE: Registrar's Office

17. Student Enrollment – College of Pharmacy											
By Ethnicity/Gender: Fall Semesters 2007 - 2011¹											
Race/Ethnicity	Gender	2007		2008		2009		2010		2011	
		FT	PT	FT	PT	FT	PT	FT	PT	FT	PT
Black or African American	Male	73	6	78	1	75	3	67	7	57	11
	Female	259	9	236	5	237	7	199	14	165	23
	Total	332	15	314	6	312	10	266	21	222	34
White	Male	14	1	17	1	18	0	24	0	28	1
	Female	62	4	60	2	62	3	73	1	79	2
	Total	76	5	77	3	80	3	97	1	107	3
Hispanic	Male	4	0	4	0	2	0	4	0	4	1
	Female	9	0	9	0	6	1	7	1	3	0
	Total	13	0	13	0	8	1	11	1	7	1
Amer. Ind./Alask. Native	Male	0	0	0	0	0	0	0	0	0	0
	Female	0	0	0	0	0	0	0	0	1	0
	Total	0	0	0	0	0	0	0	0	1	0
Asian	Male	58	3	66	4	69	1	63	1	68	3
	Female	94	4	96	5	93	5	90	3	88	2
	Total	152	7	162	9	162	6	153	4	156	5
Native Hawaiian or Other Pacific Islander								2	0	1	0
								1	0	0	0
								3	0	1	0
Two or More Races								11	0	9	1
								12	1	11	1
								23	1	20	2
Non Resident Alien	Male	9	1	16	0	19	0	18	1	25	0
	Female	21	1	19	1	26	1	25	2	29	3
	Total	30	2	35	1	45	1	43	3	54	3
Unknown	Male	16	1	20	1	22	0	2		2	0
	Female	30	0	28	2	28	0	5	0	4	1
	Total	46	1	48	3	50	0	7	1	6	1
Total		649	30	649	22	657	21	603	32	574	49
GRAND TOTAL		679		671		678		635		623	

¹¹ DATA SOURCE: Registrar's Office.

**18. Distribution of Student Enrollment
Graduate Program
Fall Semesters 2007 - 2011¹**

ACADEMIC DIVISION	2007	2008	2009	2010	2011
Division of Education (Graduate)²	86	106	169	202	182
Institute of Black Catholic Studies³	27(2/54)	33 (33/30)	28 (25/29)	25 (27/29)	28 (45/4)
Non degree seeking/transient students	1	5	4	5	1
TOTAL GRADUATE STUDIES	87	111	173	207	183

¹ DATA SOURCE: Registrar's Office and the Institute for Black Catholic Studies.

² See Table 14 for detailed listing of major areas of concentration.

³ Represents degree program students who participated in the Institute for Black Catholic Studies during the summer session. The number in parentheses indicates the number of students participating in the certificate program and the NOLA/OBCM collaboration. These numbers are not included in the Fall 2007-2011 total Graduate Studies Program.

**19. Student Enrollment - Graduate Program
by Ethnicity/Gender and Enrollment Status
Fall Semester 2011¹**

Race/Ethnicity	Gender	FT	PT	Grand Total
Black or African American	Male	18	5	23
	Female	80	30	110
	Total	98	35	133
White	Male	5	2	7
	Female	16	10	26
	Total	21	12	33
Asian	Male	0	1	1
	Female	1	0	1
	Total	1	1	2
American Indian Alaskan Native	Male	0	0	0
	Female	0	0	0
	Total	0	0	0
Hispanic	Male	0	0	0
	Female	1	2	3
	Total	1	2	3
Native Hawaiian or Other Pacific Islander	Male	0	0	0
	Female	1	0	1
	Total	1	0	1
Two or More Races	Male	0	0	0
	Female	5	0	5
	Total	5	0	5
Non - Resident Alien	Male	2	0	2
	Female	0	0	0
	Total	2	0	2
Ethnicity Unknown	Male	0	1	1
	Female	0	3	3
	Total	0	4	4
GRAND TOTAL	Male	25	9	34
	Female	104	45	149
	Total	129	54	183

¹ DATA SOURCE: Registrar's Office

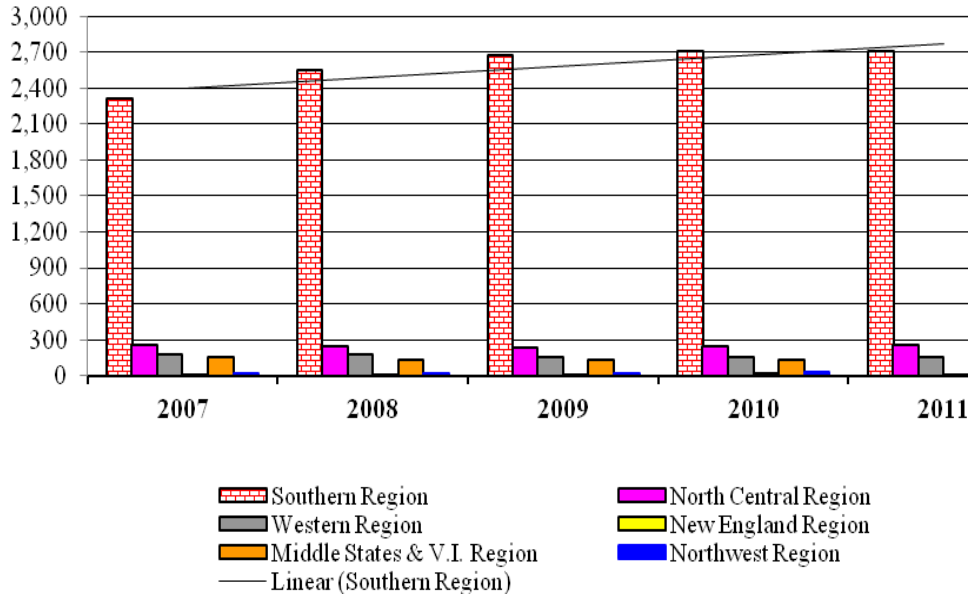
20. Geographical Origins of Students Fall Semesters 2007 - 2011¹					
REGION² / STATE³	2007	2008	2009	2010	2011
<i>Southern Region</i>					
Louisiana	1,745	1,915	2,036	1,974	1,941
Texas	232	242	235	253	262
Georgia	135	155	150	167	178
Mississippi	66	81	86	108	112
Tennessee	34	47	54	74	79
Alabama	52	51	57	60	64
Florida	18	23	23	26	28
Virginia	9	12	11	21	13
North Carolina	10	12	8	9	13
South Carolina	5	6	7	8	10
Kentucky	3	2	2	2	2
West Virginia	0	0	0	0	0
Region Total	2,309	2,546	2,669	2,702	2,702
<i>North Central Region</i>					
Illinois	95	97	97	99	101
Missouri	38	32	33	42	50
Michigan	44	31	27	33	31
Ohio	17	15	14	14	17
Indiana	22	20	16	11	15
Colorado	9	9	14	13	14
Arkansas	11	13	11	7	10
Kansas	5	5	3	4	6
Wisconsin	8	18	11	9	4
Oklahoma	4	3	3	1	3
Minnesota	7	7	5	6	2
Nebraska	0	0	1	3	2
Iowa	1	0	0	0	1
N. Dakota	0	0	0	0	0
S. Dakota	0	0	0	0	0
Region Total	261	250	235	242	256

20. Geographical Origins of Students					
Fall Semesters 2007 – 2011¹, cont.					
REGION² / STATE³	2007	2008	2009	2010	2011
<i>Northwest Region</i>					
Washington	17	12	13	15	14
Nevada	7	5	4	6	6
Oregon	0	0	1	3	5
Alaska	0	1	1	1	1
Montana	0	0	0	0	0
Region Total	24	18	19	25	26
<i>Western Region</i>					
California	162	165	147	141	148
Arizona	8	6	7	9	7
New Mexico	1	0	0	1	2
Hawaii	2	3	2	1	1
Idaho	0	0	0	0	0
Utah	0	0	0	0	0
Region Total	173	174	156	152	158
<i>New England Region</i>					
Massachusetts	3	4	8	12	10
Connecticut	4	4	1	1	3
Rhode Island	0	0	1	1	0
Maine	0	0	0	0	0
Region Total	7	8	10	14	13
<i>Middle States Region</i>					
Maryland	65	55	43	43	43
New York	26	19	26	24	30
New Jersey	25	22	27	26	22
Pennsylvania	12	14	17	11	15
District of Columbia	14	15	11	19	14
Virgin Islands/Guam	3	4	5	4	3
Delaware	5	6	6	4	1
Region Total	150	135	135	130	127

20. Geographical Origins of Students
Fall Semesters 2007 – 2011¹, cont.

REGION ² / STATE ³	2007	2008	2009	2010	2011
<i>Non Resident Alien</i>	97	96	95	98	96
<i>Other⁴</i>	67	9	19	27	20
GRAND TOTAL	3,088	3,236	3,338	3,391	3,399

Regions of Geographical Origins
Fall 2007 - 2011



¹ DATA SOURCE: Registrar's Office

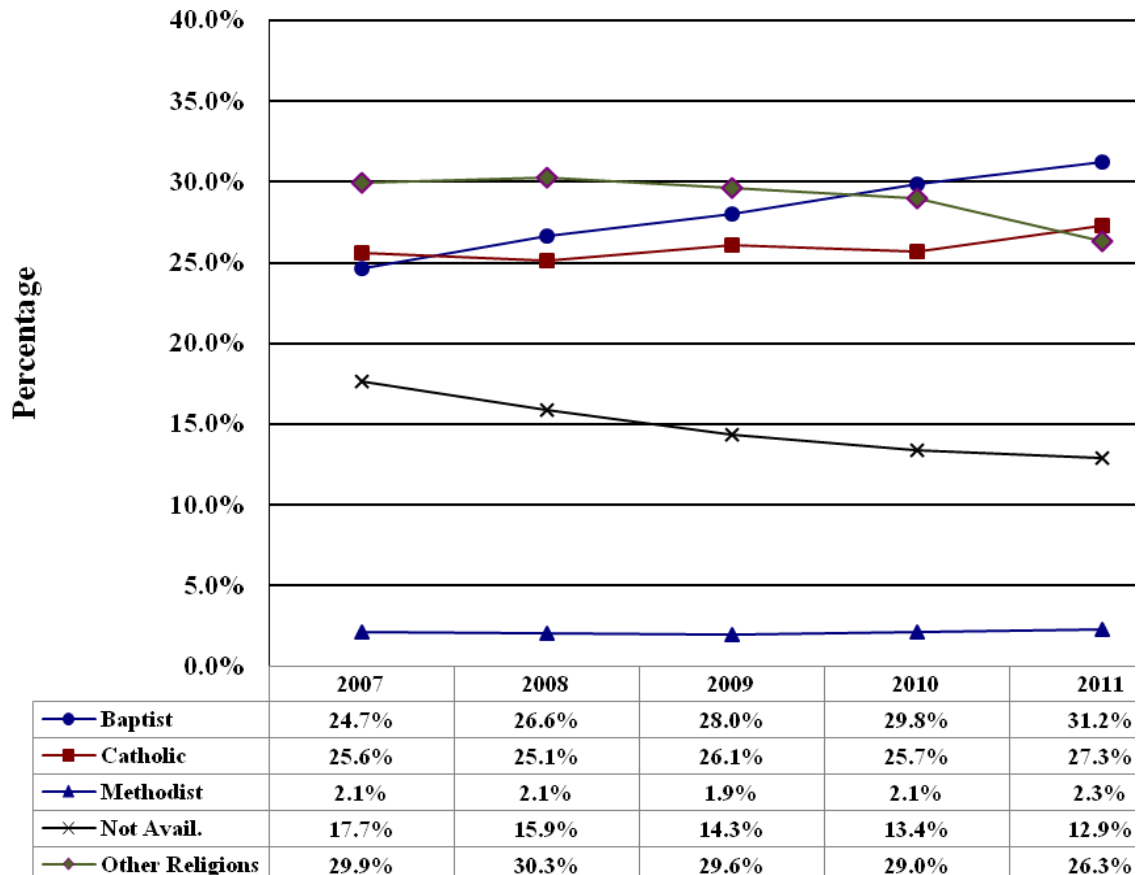
² The Regional Accrediting Associations establish regional boundaries.

³ Within each region, states are listed in descending order for 2010 representing the number of students enrolled.

⁴ Includes 67 students in 2007, 9 students in 2008, 19 students in 2009, 27 students in 2010, and in 2011, 20 students listed in the four week headcount data file with unknown state of origin.

21. Student Religious Denomination Trends
Fall Semesters 2007-2011¹

Religion	2007		2008		2009		2010		2011	
	#	%	#	%	#	%	#	%	#	%
Baptist	762	24.7%	862	26.6%	935	28.0%	1,012	29.8%	1,061	31.2%
Catholic	790	25.6%	812	25.1%	872	26.1%	872	25.7%	929	27.3%
Episcopal	8	0.3%	8	0.2%	12	0.4%	11	0.3%	11	0.3%
Lutheran	8	0.3%	7	0.2%	7	0.2%	7	0.2%	8	0.2%
Methodist	66	2.1%	68	2.1%	65	1.9%	72	2.1%	77	2.3%
A. M. E.	27	0.9%	33	1.0%	28	0.8%	28	0.8%	31	0.9%
Nondenom.	69	2.2%	66	2.0%	46	1.4%	37	1.1%	30	0.9%
Pentacostal	44	1.4%	42	1.3%	45	1.3%	58	1.7%	55	1.6%
Other	731	23.7%	787	24.3%	820	24.6%	817	24.1%	740	21.8%
Not Avail.²	546	17.7%	515	15.9%	478	14.3%	453	13.4%	438	12.9%
None	37	1.2%	36	1.1%	30	0.9%	24	0.7%	19	0.6%
TOTAL	3,088	100%	3,236	100 %	3,338	100%	3,391	100%	3,399	100%



¹ DATA SOURCE: Registrar’s Office

² Religious preference is requested on a voluntary basis on the admissions application.