

I. Freshman Class

During the fall 2011 term, seven hundred and eighty-six students enrolled as new first-time freshmen. Six years after Katrina, Xavier continues to see growth. The freshman class of 2011 is at a mark of 79% of the class of 2004, (our largest freshman class at 1,001), our last pre-Katrina new first-time freshmen class. What follows in the next few pages are demographic snapshots of the freshmen class of 2011.

Table 1 shows the enrollment of freshmen from local high schools. Our student yield from local private schools has remained steady.

Table 2 lists origin states of the freshman cohorts, from 2007 to present. This year's 2011 cohort comes principally from Louisiana (50%), up 5% from last year. Other states with large representation include Texas (10%), Georgia (6%), California (5.5%), Illinois (3.7%), Tennessee (3.3%), and Mississippi (3.1%).

Table 3 lists freshmen by department and major. The distribution of freshman majors has remained consistent. For the last five years, about three-fourths of the first-time freshmen major in the natural sciences, with the remaining quarter in other disciplines.

Tables 4a and 4b display SAT and ACT scores of entering freshmen. Table 5 shows the retention rate over the last decade.

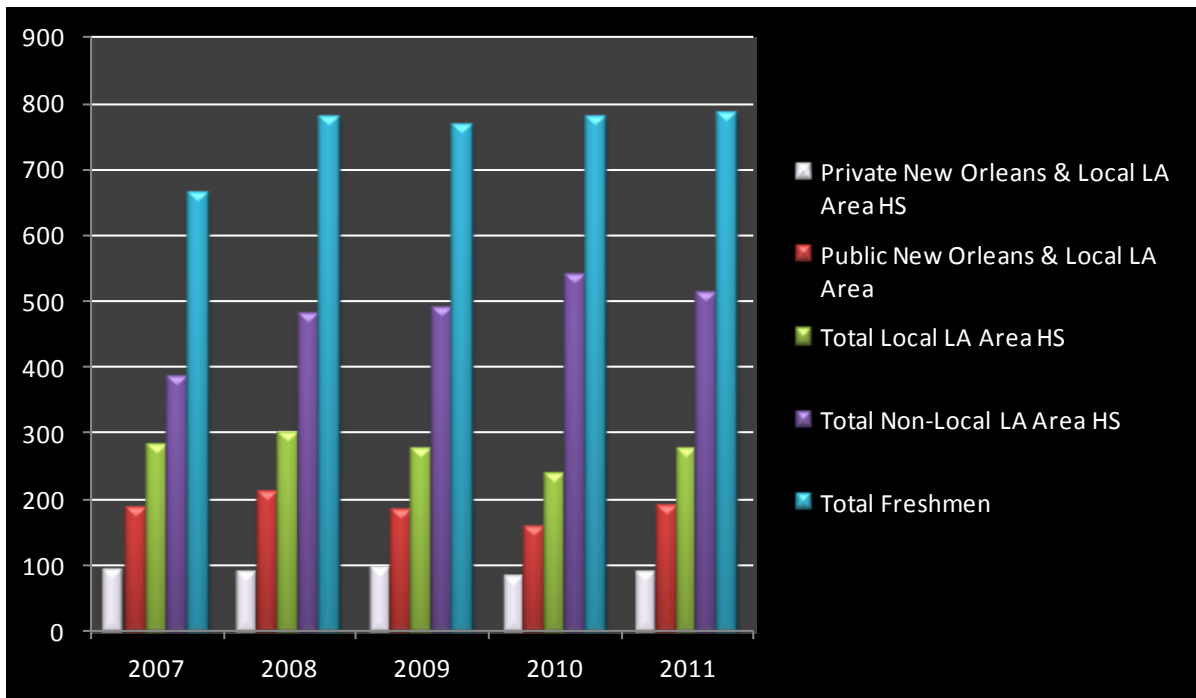
Tables 6a and 6b gives an enrollment analysis by gender and racial/ethnic status of the 2011 freshman class. While Xavier is a predominantly Black university, students of other ethnic origins are members of the freshman class of 2011.

1. Originating High Schools¹						
New Orleans and Local Louisiana, 2007–2011						
TYPE	HIGH SCHOOL	2007	2008	2009	2010	2011
Private²	Brother Martin High	8	2	6	4	6
	Cabrini High School	6	7	3	6	6
	De La Salle High School	5	5	6	7	4
	Holy Cross High School	3	1	2	1	0
	Jesuit High School	2	3	4	3	3
	Mt. Carmel Academy	3	1	1	3	2
	St. Augustine High School	13	17	18	10	13
	St. Mary's Academy	13	12	7	8	5
	St. Mary's Dominican High	4	3	6	2	6
	Ursuline Academy	4	4	3	3	2
	Xavier Preparatory School	15	15	15	12	11
	Other Orleans Private High Schools	1	1	4	0	2
	Other Area Private High Schools (Jeff., St. Charles, and St. John the Bapt. parishes)	17	17	20	24	28
	TOTAL		94	88	95	83
Public²	Algiers Technology Academy	0	0	2	4	3
	Benjamin Franklin High	18	9	11	4	7
	Edna Karr High School	9	27	12	10	5
	Lusher High School	0	0	3	3	7
	McDonogh 35 High School	17	17	14	9	11
	McMain High School	23	13	10	9	20
	New Orleans Science/Math High	4	11	7	1	6
	O. Perry Walker High	3	3	8	3	4
	Rabouin High School	1	2	3	1	1
	Sarah Reed High School	2	3	2	2	4
	Warren Easton High School	11	24	18	13	15
	Other Orleans Public High Schools	9	3	2	16	12
	Other Area Public High Schools (Jeff., St. Charles, and St. John the Bapt. parishes)	89	99	89	81	93
	TOTAL		186	211	181	156

¹ DATA SOURCE: 2011 *Freshman Profile*, published by the Office of Admissions.

² This represents a revised list that takes into account post-Katrina school closings as well as newly opened schools in Orleans parish.

Originating High Schools
New Orleans Area, 2007 – 2011, *cont.*

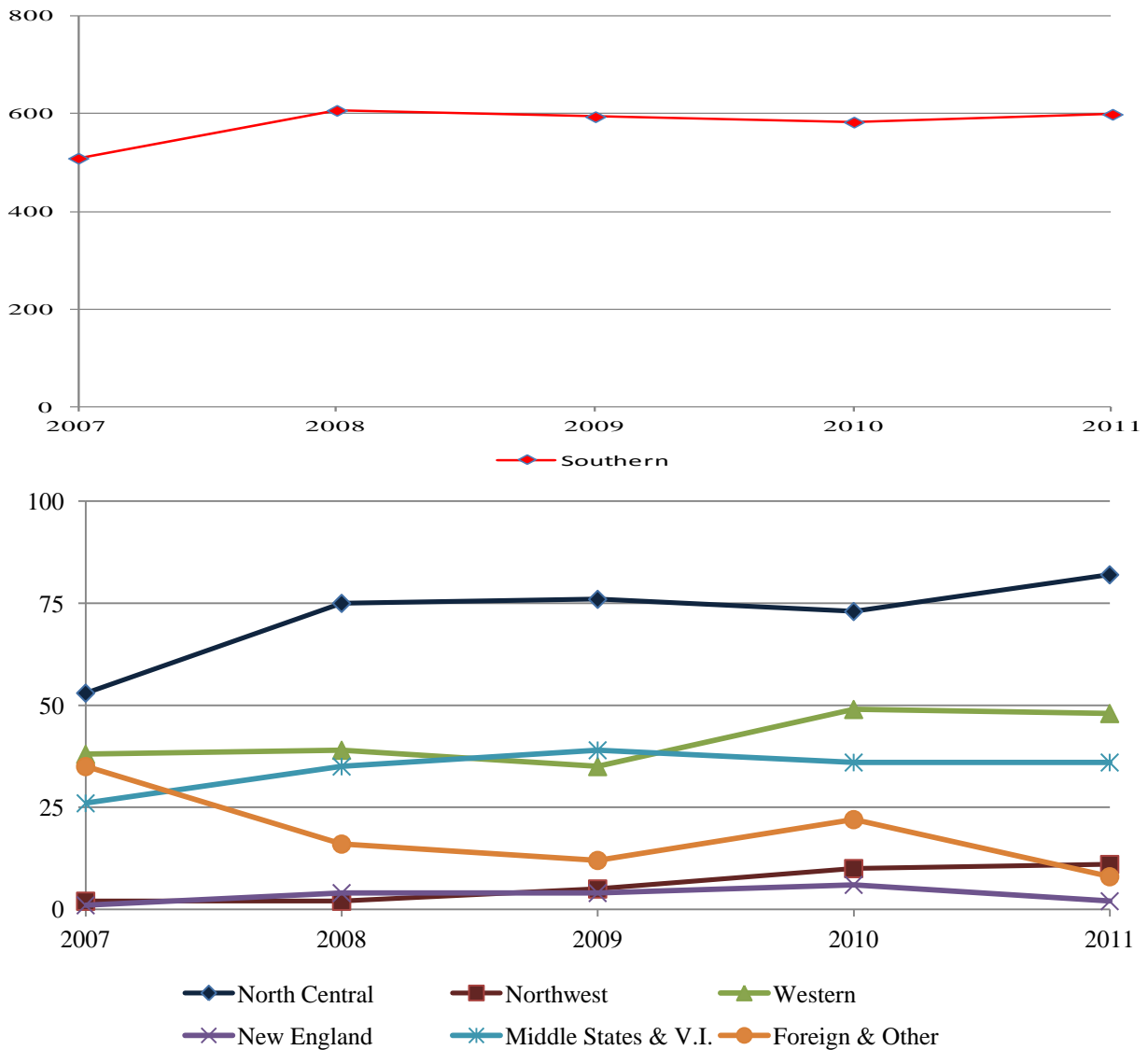


2. Geographical Origins of First Time Freshmen Fall Semesters 2007 – 2011¹						
REGION² / STATE³	2007	2008	2009	2010	2011	5 Yr. Avg.
<i>Southern Region</i>						
Louisiana	382	411	419	352	391	391.0
Texas	68	62	62	72	79	68.6
Georgia	22	53	42	60	47	44.8
Tennessee	11	23	18	29	26	21.4
Mississippi	11	25	23	36	24	23.8
Alabama	8	15	16	12	17	13.6
Florida	4	7	6	8	6	6.2
North Carolina	0	4	2	4	5	3.0
South Carolina	0	4	3	2	3	2.4
Virginia	2	3	3	7	1	3.2
Kentucky	1	0	0	1	0	0.4
West Virginia	0	0	0	0	0	0.0
Region Total	509	607	594	583	599	578.4
<i>North Central Region</i>						
Illinois	22	37	30	29	29	29.4
Missouri	8	9	10	14	17	11.6
Michigan	10	4	9	9	8	8.0
Colorado	1	2	7	4	6	4.0
Indiana	6	5	5	2	6	4.8
Arkansas	2	3	3	2	5	3.0
Ohio	2	3	6	5	4	4.0
Kansas	0	2	1	0	3	1.2
Oklahoma	0	0	1	0	2	0.6
Iowa	0	0	0	0	1	0.2
Minnesota	1	2	0	1	1	1.0
Wisconsin	1	8	3	5	0	3.4
Nebraska	0	0	1	2	0	0.6
N. Dakota	0	0	0	0	0	0.0
S. Dakota	0	0	0	0	0	0.0
Region Total	53	75	76	73	82	71.8

2. Geographical Origins of First Time Freshmen Fall Semesters 2007 – 2011¹, cont.						
REGION² / STATE³	2007	2008	2009	2010	2011	5 Yr. Avg.
<i>Northwest Region</i>						
Nevada	2	0	1	2	5	2.0
Washington	0	1	3	7	4	3.0
Oregon	0	0	1	1	2	0.8
Alaska	0	1	0	0	0	0.2
Montana	0	0	0	0	0	0.0
Region Total	2	2	5	10	11	6.0
<i>Western Region</i>						
California	35	39	35	46	43	39.6
Arizona	2	0	0	2	3	1.4
Hawaii	1	0	0	0	1	0.4
New Mexico	0	0	0	1	1	0.4
Idaho	0	0	0	0	0	0.0
Utah	0	0	0	0	0	0.0
Region Total	38	39	35	49	48	41.8
<i>New England Region</i>						
Massachusetts	0	3	4	5	1	2.6
Connecticut	1	1	0	0	1	0.6
Maine	0	0	0	0	0	0.0
Rhode Island	0	0	0	1	0	0.2
Region Total	1	4	4	6	2	3.4
<i>Middle States Region</i>						
Maryland	8	12	8	8	10	9.2
New Jersey	7	3	10	9	9	7.6
New York	5	5	12	7	7	7.2
Pennsylvania	3	7	4	3	5	4.4
District of Columbia	1	7	4	9	4	5.0
Virgin Islands	1	1	1	0	1	0.8
Delaware	1	0	0	0	0	0.2
Region Total	26	35	39	36	36	34.4

**2. Geographical Origins of First Time Freshmen
Fall Semesters 2007–2011¹, cont.**

REGION ² / STATE ³	2007	2008	2009	2010	2011	5 Yr. Avg.
<i>Non Resident Alien</i>	17	14	9	16	5	12.2
<i>Other⁴</i>	18	2	3	6	3	6.4
GRAND TOTAL	664	778	765	779	786	754.4



¹ DATA SOURCE: Registrar's Office

² The Regional Accrediting Associations establish regional boundaries.

³ Within each region, states are listed in descending order for 2011 representing the number of students enrolled.

⁴ Includes eighteen students in 2007, two students in 2008, three students in 2009, five students in 2010 and 1 student from the U.S. territory Guam, and in 2011, three students listed in the four week headcount data file with unknown state of origin.

**3. Trend in Freshman Enrollment by Major
Fall Semesters 2007–2011¹**

DEPARTMENT/MAJOR	2007	2008	2009	2010	2011
Business (%)	38 (6%)	48 (6%)	39 (5%)	40 (5%)	40 (5%)
Humanities					
Art	2	3	3	3	8
English	4	7	12	7	3
Languages	3	1	0	0	0
Mass Communications	13	14	14	13	16
Music	10	8	6	10	10
Philosophy	2	0	0	1	2
Speech Pathology	4	5	0	5	4
Theology	0	1	0	0	0
TOTAL (%)	38 (6%)	39 (5%)	35 (5%)	39 (5%)	43 (5%)
Natural Sciences					
Biology	249	301	271	326	368
Chemistry	47	55	60	64	48
Chemistry (Pre-Pharmacy)	198	214	219	177	168
Computer Science	4	9	7	3	13
Mathematics	1	1	5	2	4
Physics/Engineering	5	14	20	15	8
TOTAL (%)	504 (76%)	594 (76%)	582 (76%)	587 (75%)	609 (77%)
Social Sciences					
Education/H&PE ²	13	11	10	9	13
History	2	2	2	4	5
Political Science	8	11	23	14	13
Psychology	55	63	62	62	48
Sociology	2	9	2	8	2
TOTAL (%)	80 (12%)	96 (12%)	99 (13%)	97 (12%)	81 (10%)
Office of Academic Enhancement³ (%)	12 (2%)	7 (1%)	16 (2%)	21 (3%)	20 (3%)
Grand Total	664⁴	778⁴	765⁴	779⁴	786⁴

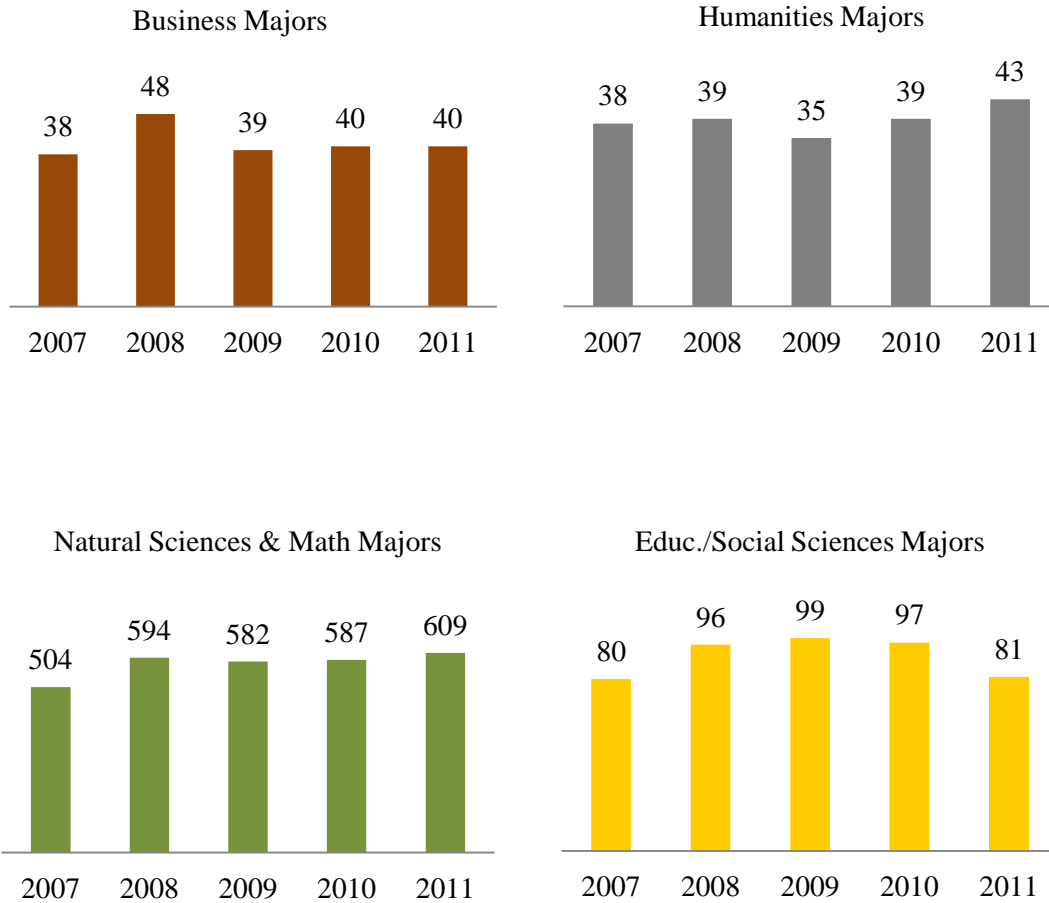
¹ DATA SOURCE: 2011 *Freshman Profile* published by the Office of Admissions.

² Secondary education majors are included under Education/H&PE and also in their major field of discipline. They are included only once in the Grand Total.

³ Deciding Majors are now advised by the Office of Academic Enhancement.

⁴ College credits earned prior to coming to Xavier as a first-time freshman: In 2007, 2 classified as sophomores and 1 classified as a junior; in 2008, 4 classified as sophomores; in 2009, 2 are classified as sophomores, in 2010, 4 classified as sophomores and 1 classified as a junior, and in 2011, five classified as sophomores and 1 classified as a junior.

3. Trend in Freshman Enrollment by Majors Fall Semesters 2007–2011¹, *cont.*



¹ DATA SOURCE: 2011 *Freshman Profile* published by the Office of Admissions.

4a. Average SAT Combined Scores of Entering Freshmen Fall Semesters 2007–2011¹					
GROUP	2007	2008	2009	2010	2011
National	1017	1017	1016	1017	1011
Louisiana	1136	1130	1121	1105	1105
African American	862	856	855	857	855
Xavier (number of students)	929 (198)	935 (240)	947 (250)	957 (265)	972 (256)
Unrestricted students (number of students)	942 (188)	941 (234)	955 (236)	959 (258)	977 (250)
Restricted students ² (number of students)	689 (10)	708 (6)	820 (14)	890 (7)	768 (6)

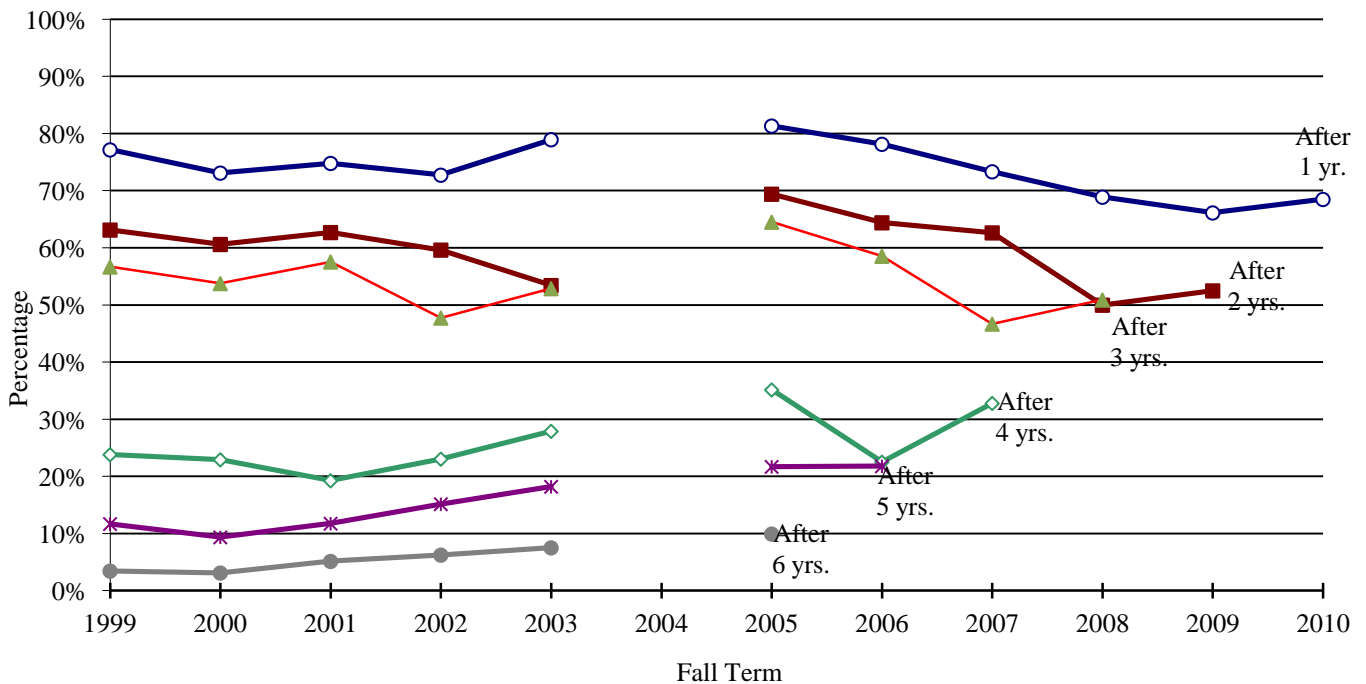
4b. Average ACT Composite Scores of Entering Freshmen Fall Semesters 2007–2011¹					
GROUP	2007	2008	2009	2010	2011
National	21.2	21.3	21.1	21.0	21.1
Louisiana	20.1	20.3	20.1	20.1	20.2
African American	17.0	16.9	16.9	16.9	17.0
Xavier (number of students)	20.6 (557)	20.4 (650)	20.9 (640)	21.0 (638)	21.5 (638)
Unrestricted students (number of students)	20.8 (532)	20.6 (617)	21.1 (620)	21.1 (611)	21.9 (641)
Restricted students ² (number of students)	16.6 (25)	15.7 (33)	15.4 (20)	17.5 (27)	16.3 (22)

¹ DATA SOURCE: 2011 *Freshman Profile*, published by the Office of Admissions.

² Students admitted on a probationary basis who must take a restricted schedule.

5. Retention Rate of Recent Classes¹

Fall Term	# Enrolled ²	After 1 yr.	After 2 yrs.	After 3 yrs.	After 4 yrs. ³	After 5 yrs. ³	After 6 yrs. ³
1999	898	77.2%	63.1%	56.7%	23.8%	11.7%	3.5%
2000	833	73.1%	60.6%	53.8%	22.9%	9.4%	3.1%
2001	893	74.8%	62.7%	57.6%	19.3%	11.8%	5.2%
2002	976	72.7%	59.6%	47.7%	23.1%	15.2%	6.3%
2003	917	79.0%	53.4%	52.9%	27.9%	18.2%	7.5%
2004	1001	50.2% ⁴	47.6%	44.2%	24.7%	16.7%	8.2%
2005	654	81.3%	69.4%	64.5%	35.2%	21.7%	9.9%
2006	444	78.2%	64.4%	58.6%	22.5%	21.8%	
2007	664	73.3%	62.7%	55.4%	32.8%		
2008	778	68.9%	55.0%	50.9%			
2009	765	66.1%	52.5%				
2010	779	68.5%					



¹ DATA SOURCE: Registrar's Office and the Office of Planning and Institutional Research.

² Includes the number of new full-time and part-time freshmen; transfers are not included.

Includes all freshmen, not just those in four-year programs.

³ By the 4th, 5th and 6th years, graduations as well as non-returning students lower the retention rate.

⁴ Fall 2004 Cohort that returned for the Fall 2005 term after Hurricane Katrina data not illustrated in chart.

6a. Male Freshman Enrollment by Racial/Ethnic Status Fall Semesters 2007–2011					
Race/Ethnicity¹	2007	2008	2009	2010	2011
Black or African American	121	140	163	181	148
White	5	2	3	3	3
Asian	20	31	29	24	27
Hispanic	1	1	4	4	5
Amer. Ind. or Alask. Native	0	1	0	0	1
Native Haw. or Other Pac. Isl.				0	0
Two or More Races				4	6
Non Resident Alien	4	5	3	9	4
Unknown	29	25	13	1	7
Grand Total	180	205	215	226	201

6b. Female Freshman Enrollment by Racial/Ethnic Status Fall Semester 2007–2011					
Race/Ethnicity¹	2007	2008	2009	2010	2011
Black or African American	365	466	457	482	491
White	6	6	9	10	13
Asian	39	31	28	23	38
Hispanic	4	3	4	16	10
Amer. Ind. or Alask. Native	0	1	0	1	0
Native Haw. or Other Pac. Isl.				0	0
Two or More Races				10	25
Non Resident Alien	12	9	6	7	1
Unknown	58	57	46	4	7
Grand Total	484	573	550	553	585

¹ The U.S. Office of Management and Budget published new standards for Federal agencies on the collection of racial and ethnic data. The categories do not denote scientific definitions of anthropological origins. The designations are used to categorize U.S. citizens, resident aliens, and other eligible non-citizens. SOURCE: <http://nces.ed.gov/ipeds/reic/definitions.asp>

6. Freshman Enrollment by Gender and Racial/Ethnic Status Fall Semester 2007 – 2011

