

I. Freshman Class

During the fall 2010 term, seven hundred and seventy-nine students enrolled as new first-time freshmen. Six years after Katrina, Xavier continues to see growth. The freshman class of 2010 is at a mark of 78% of the class of 2004, (our largest freshman class at 1,001), our last new first-time freshmen class pre-Katrina. What follows in the next few pages are demographic snapshots of the freshmen class of 2010.

Table 1 shows the enrollment of freshmen from local high schools. Our student yield from local private schools has remained steady.

Table 2 lists origin states of the freshman cohorts, from 2006 to present. This year's 2010 cohort comes principally from Louisiana 45%, down 10% from last year. Other states with large representation include Texas (9%), Georgia (7.7%), California (5.9%), Illinois (3.7%), and Mississippi (4.6%).

Table 3 lists freshmen by department and major. The distribution of freshman majors has remained consistent. For the last five years, about three-fourths of the first-time freshmen major in the natural sciences, with the remaining quarter in other disciplines.

Tables 4a and 4b display SAT and ACT scores of entering freshmen. Table 5 shows the retention rate over the last decade.

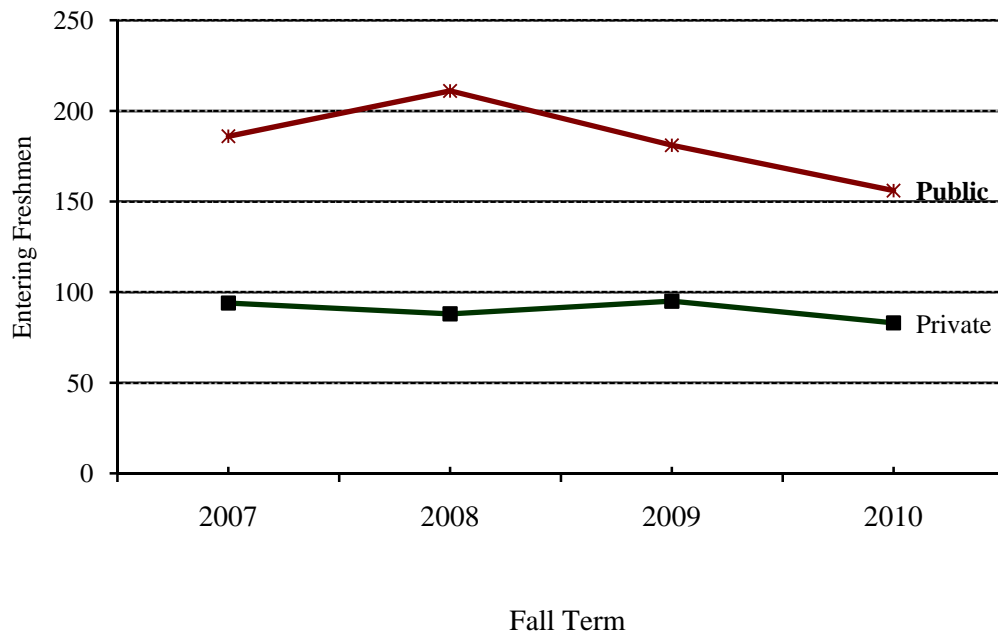
Tables 6a and 6b gives an enrollment analysis by gender and racial/ethnic status of the 2010 freshman class. While Xavier is a predominantly Black university, students of other ethnic origins are members of the freshman class of 2010.

1. Originating High Schools¹					
New Orleans and Local Louisiana, 2007 - 2010					
TYPE	HIGH SCHOOL	2007	2008	2009	2010
Private²	Brother Martin High	8	2	6	4
	Cabrini High School	6	7	3	6
	De La Salle High School	5	5	6	7
	Holy Cross High School	3	1	2	1
	Jesuit High School	2	3	4	3
	Mt. Carmel Academy	3	1	1	3
	St. Augustine High School	13	17	18	10
	St. Mary's Academy	13	12	7	8
	St. Mary's Dominican High	4	3	6	2
	Ursuline Academy	4	4	3	3
	Xavier Preparatory School	15	15	15	12
	Other Orleans Private High Schools	1	1	4	0
	Other Area Privates High Schools (Jeff., St. Charles, and St. John the Bapt. parishes)	17	17	20	24
	TOTAL		94	88	95
Public²	Algiers Technology Academy	0	0	2	4
	Benjamin Franklin High	18	9	11	4
	Edna Karr High School	9	27	12	10
	Lusher High School	0	0	3	3
	McDonogh 35 High School	17	17	14	9
	McMain High School	23	13	10	9
	New Orleans Science/Math High	4	11	7	1
	O.Perry Walker High	3	3	8	3
	Rabouin High School	1	2	3	1
	Sarah Reed High School	2	3	2	2
	Warren Easton High School	11	24	18	13
	Other Orleans Public High Schools	9	3	2	16
	Other Area Public High Schools (Jeff., St. Charles, and St. John the Bapt. parishes)	89	99	89	81
	TOTAL		186	211	181

¹ DATA SOURCE: 2010 *Freshman Profile*, published by the Office of Admissions.

² This represents a revised list that takes into account post-Katrina school closings as well as newly opened schools in Orleans parish.

Originating High Schools
New Orleans Area, 2007 – 2010, Cont.



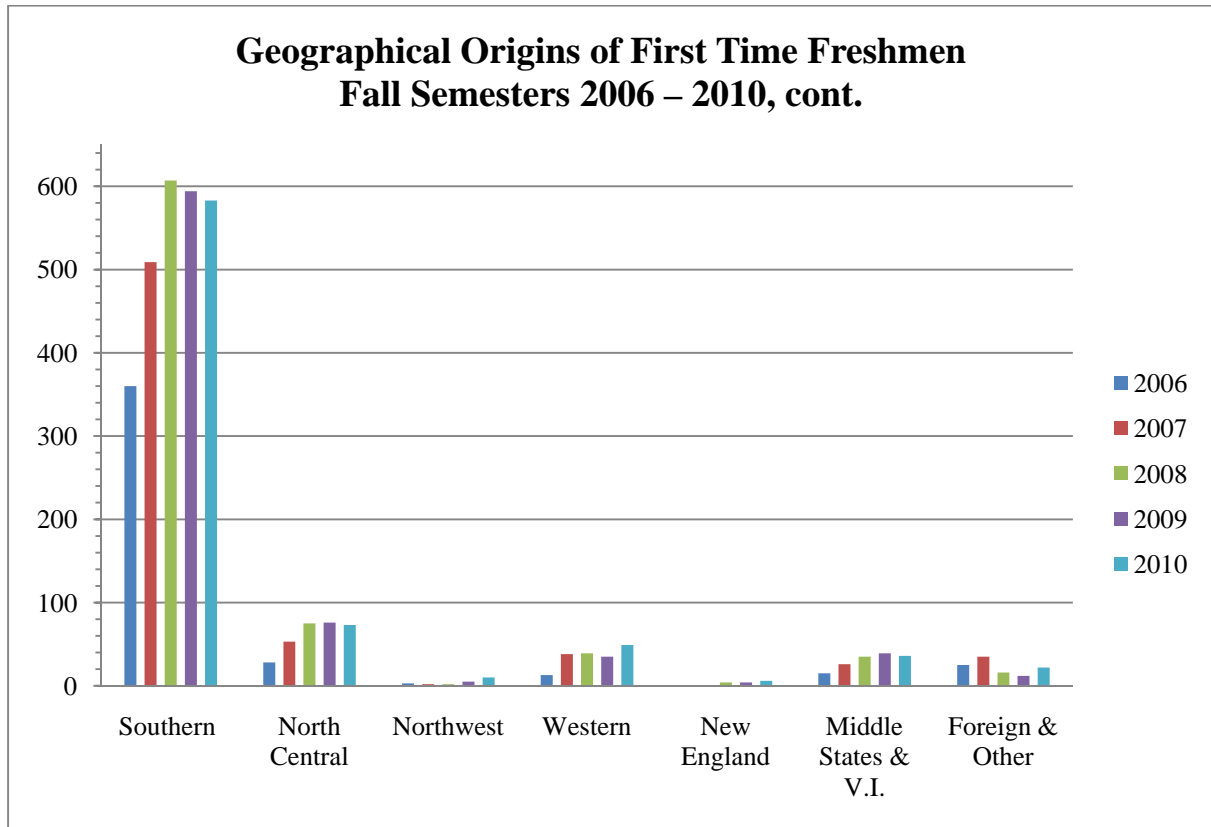
2. Geographical Origins of First Time Freshmen Fall Semesters 2006 - 2010¹						
REGION² / STATE³	2006	2007	2008	2009	2010	5 Yr. Avg.
<i>Southern Region</i>						
Louisiana	293	382	411	419	352	371.4
Texas	22	68	62	62	72	57.2
Georgia	15	22	53	42	60	38.4
Mississippi	7	11	25	23	36	20.4
Tennessee	6	11	23	18	29	17.4
Alabama	7	8	15	16	12	11.6
Florida	3	4	7	6	8	5.6
Virginia	3	2	3	3	7	3.6
North Carolina	3	0	4	2	4	2.6
South Carolina	0	0	4	3	2	1.8
Kentucky	1	1	0	0	1	0.6
West Virginia	0	0	0	0	0	0.0
Region Total	360	509	607	594	583	530.6
<i>North Central Region</i>						
Illinois	12	22	37	30	29	26.0
Missouri	3	8	9	10	14	8.8
Michigan	4	10	4	9	9	7.2
Ohio	2	2	3	6	5	3.6
Wisconsin	0	1	8	3	5	3.4
Colorado	2	1	2	7	4	3.2
Indiana	2	6	5	5	2	4.0
Arkansas	1	2	3	3	2	2.2
Nebraska	0	0	0	1	2	0.6
Minnesota	2	1	2	0	1	1.2
Kansas	0	0	2	1	0	0.6
Oklahoma	0	0	0	1	0	0.2
Iowa	0	0	0	0	0	0.0
N. Dakota	0	0	0	0	0	0.0
S. Dakota	0	0	0	0	0	0.0
Region Total	28	53	75	76	73	61.0

2. Geographical Origins of First Time Freshmen						
Fall Semesters 2006 – 2010¹, cont.						
REGION² / STATE³	2006	2007	2008	2009	2010	5 Yr. Avg.
<i>Northwest Region</i>						
Washington	3	0	1	3	7	2.8
Nevada	0	2	0	1	2	1.0
Oregon	0	0	0	1	1	0.4
Alaska	0	0	1	0	0	0.2
Montana	0	0	0	0	0	0.0
Region Total	3	2	2	5	10	4.4
<i>Western Region</i>						
California	13	35	39	35	46	33.6
Arizona	0	2	0	0	2	0.8
Hawaii	0	1	0	0	0	0.2
Idaho	0	0	0	0	0	0.0
New Mexico	0	0	0	0	1	0.2
Utah	0	0	0	0	0	0.0
Region Total	13	38	39	35	49	34.8
<i>New England Region</i>						
Massachusetts	0	0	3	4	5	2.4
Connecticut	0	1	1	0	0	0.4
Maine	0	0	0	0	0	0.0
Rhode Island	0	0	0	0	1	0.2
Region Total	0	1	4	4	6	3.0
<i>Middle States Region</i>						
New Jersey	3	7	3	10	9	6.4
District of Columbia	1	1	7	4	9	4.4
Maryland	9	8	12	8	8	9.0
New York	0	5	5	12	7	5.8
Pennsylvania	1	3	7	4	3	3.6
Virgin Islands	0	1	1	1	0	0.6
Delaware	1	1	0	0	0	0.4
Region Total	15	26	35	39	36	30.2

**2. Geographical Origins of First Time Freshmen
Fall Semesters 2006 – 2010¹, cont.**

REGION ² / STATE ³	2006	2007	2008	2009	2010	5 Yr. Avg.
<i>Non Resident Alien</i>	16	17	14	9	16	14.4
<i>Other⁴</i>	9	18	2	3	6	7.6
GRAND TOTAL	444	664	778	765	779	686.0

**Geographical Origins of First Time Freshmen
Fall Semesters 2006 – 2010, cont.**



¹ DATA SOURCE: Registrar's Office

² The Regional Accrediting Associations establish regional boundaries.

³ Within each region, states are listed in descending order for 2010 representing the number of students enrolled.

⁴ Includes nine students in 2006, eighteen students in 2007, two students in 2008, three students in 2009, and in 2010, 1 student from the U.S. territory Guam and five listed in four week headcount data file with unknown state of origin.

3. Trend in Freshman Enrollment by Major Fall Semesters 2006 - 2010¹

DEPARTMENT/MAJOR	2006	2007	2008	2009	2010
Business (%)	23 (5%)	38 (6%)	48 (6%)	39 (5%)	40 (5%)
Humanities					
Art	1	2	3	3	3
English	2	4	7	12	7
Languages	0	3	1	0	0
Mass Communications	10	13	14	14	13
Music	4	10	8	6	10
Philosophy	0	2	0	0	1
Speech Pathology	1	4	5	0	5
Theology	1	0	1	0	0
TOTAL (%)	19 (4%)	38 (6%)	39 (5%)	35 (5%)	39 (5%)
Natural Sciences					
Biology	134	249	301	271	326
Chemistry	18	47	55	60	64
Chemistry (Pre-Pharmacy)	145	198	214	219	177
Computer Science	11	4	9	7	3
Mathematics	1	1	1	5	2
Physics/Engineering	4	5	14	20	15
TOTAL (%)	313 (70%)	504 (76%)	594 (76%)	582 (76%)	587 (75%)
Social Sciences					
Education/H&PE ²	10	13	11	10	9
History	0	2	2	2	4
Political Science	6	8	11	23	14
Psychology	28	55	63	62	62
Sociology	2	2	9	2	8
TOTAL (%)	46 (10%)	80 (12%)	96 (12%)	99 (13%)	97 (12%)
Deciding³ (%)	50 (11%)	---	---	--	--
Office of Academic Enhancement (%)	---	12 (2%)	7 (1%)	16 (2%)	21 (3%)
Grand Total	444⁴	664⁴	778⁴	765⁴	779⁴

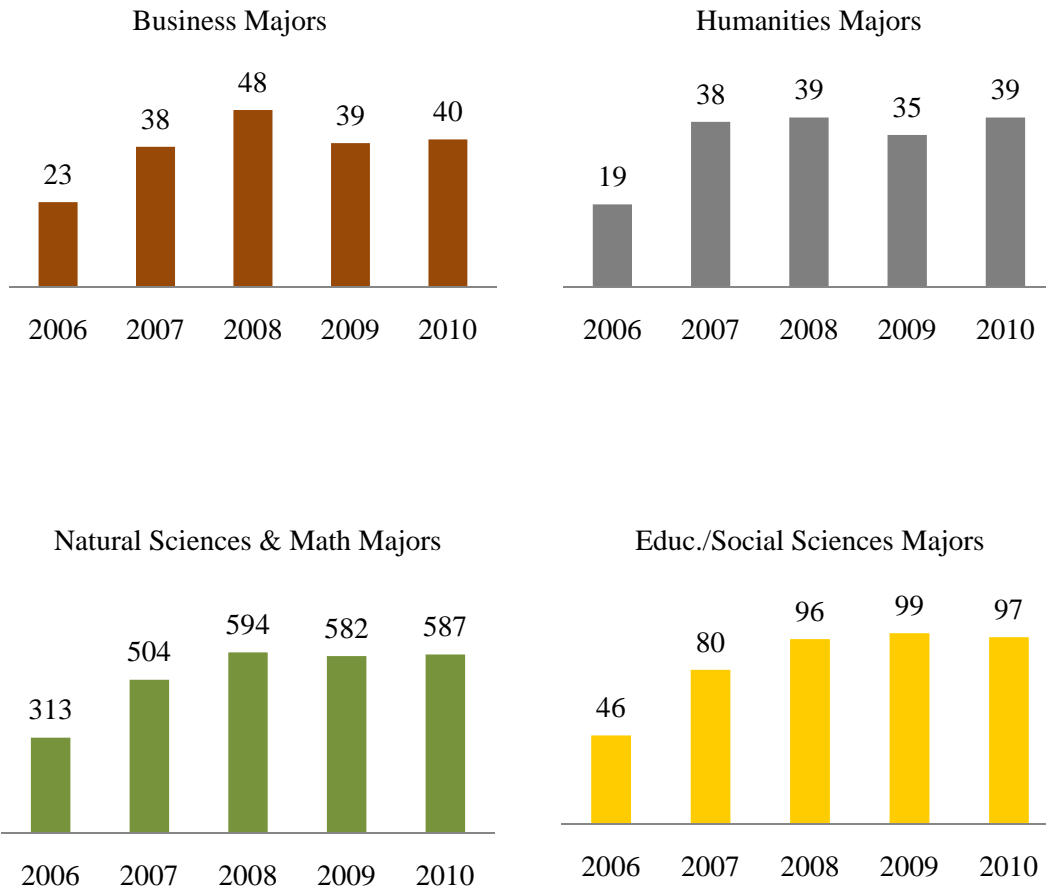
¹ DATA SOURCE: 2010 *Freshman Profile* published by the Office of Admissions.

² Secondary education majors are included under Education/H&PE and also in their major field of discipline. They are included only once in the Grand Total.

³ Deciding Majors are now advised by the Office of Academic Enhancement.

⁴ College credits earned prior to coming to Xavier as a first – time freshman: In 2006, 1 classified as a junior; in 2007, 2 classified as sophomores and 1 classified as a junior; in 2008, 4 classified as sophomores; in 2009, 2 are classified as sophomores, and in 2010, 4 classified as sophomores and 1 classified as a junior.

3. Trend in Freshman Enrollment by Majors Fall Semesters 2006 - 2010¹, cont.



¹ DATA SOURCE: 2010 *Freshman Profile* published by the Office of Admissions.

4a. Average SAT Combined Scores of Entering Freshmen Fall Semesters 2006- 2010¹					
GROUP	2006	2007	2008	2009	2010
National	1021	1017	1017	1016	1017
Louisiana	1141	1136	1130	1121	1105
African American	863	862	856	855	857
Xavier (number of students)	925 (117)	929 (198)	935 (240)	947 (250)	957 (265)
Unrestricted students (number of students)	927 (113)	942 (188)	941 (234)	955 (236)	959 (258)
Restricted students ² (number of students)	885 (4)	689 (10)	708 (6)	820 (14)	890 (7)

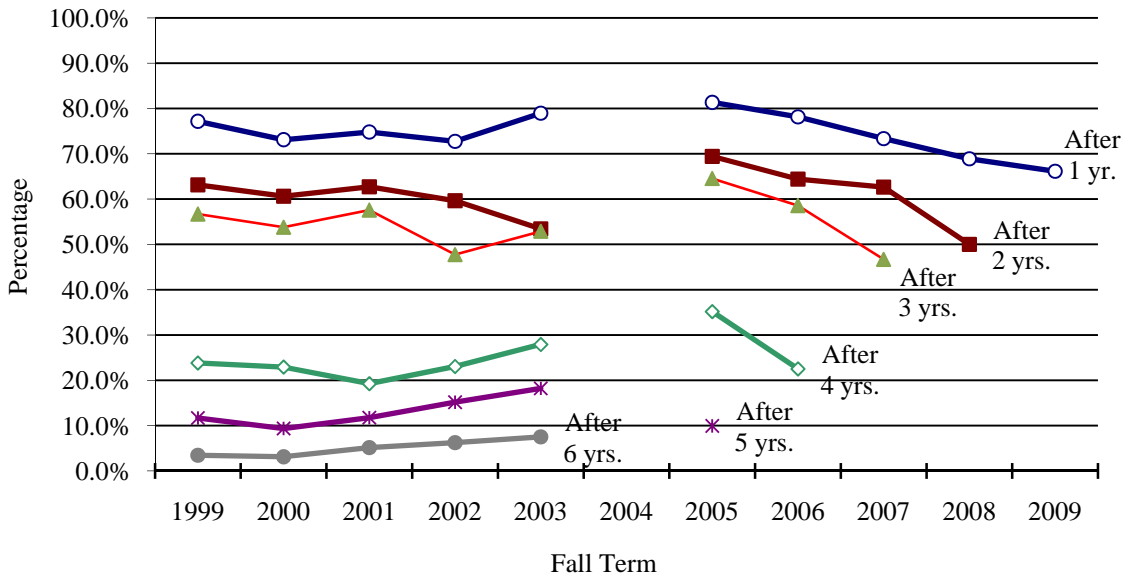
4b. Average ACT Composite Scores of Entering Freshmen Fall Semesters 2006 – 2010¹					
GROUP	2006	2007	2008	2009	2010
National	21.1	21.2	21.3	21.1	21.0
Louisiana	20.1	20.1	20.3	20.1	20.1
African American	17.1	17.0	16.9	16.9	16.9
Xavier (number of students)	20.2 (395)	20.6 (557)	20.4 (650)	20.9 (640)	21.0 (638)
Unrestricted students (number of students)	20.4 (378)	20.8 (532)	20.6 (617)	21.1 (620)	21.1 (611)
Restricted students ² (number of students)	16.1 (17)	16.6 (25)	15.7 (33)	15.4 (20)	17.5 (27)

¹ DATA SOURCE: 2010 *Freshman Profile*, published by the Office of Admissions.

² Students admitted on a probationary basis who must take a restricted schedule.

5. Retention Rate of Recent Classes¹

Fall Term	# Enrolled ²	After 1 yr.	After 2 yrs.	After 3 yrs.	After 4 yrs. ³	After 5 yrs. ³	After 6 yrs. ³
1998	846	73.9%	63.2%	59.1%	23.0%	11.0%	4.8%
1999	898	77.2%	63.1%	56.7%	23.8%	11.7%	3.5%
2000	833	73.1%	60.6%	53.8%	22.9%	9.4%	3.1%
2001	893	74.8%	62.7%	57.6%	19.3%	11.8%	5.2%
2002	976	72.7%	59.6%	47.7%	23.1%	15.2%	6.3%
2003	917	79.0%	53.4%	52.9%	27.9%	18.2%	7.5%
2004	1001	50.2% ⁴	47.6%	44.2%	24.7%	16.7%	
2005	654	81.3%	69.4%	64.5%	35.2%	9.9%	
2006	444	78.2%	64.4%	58.6%	22.5%		
2007	664	73.3%	62.7%	46.7%			
2008	778	68.9%	50.0%				
2009	765	66.1%					



¹ DATA SOURCE: Registrar's Office and the Office of Planning and Institutional Research.

² Includes the number of new full-time and part-time freshmen; transfers are not included. Includes all freshmen, not just those in four-year programs.

³ By the 4th, 5th and 6th years, graduations as well as non-returning students lower the retention rate.

⁴ Fall 2004 Cohort that returned for the Fall 2005 term after Hurricane Katrina data is not illustrated in chart.

6a. Male Freshman Enrollment by Racial/Ethnic Status Fall Semesters 2006 - 2010					
Race/Ethnicity¹	2006	2007	2008	2009	2010
Black or African American	83	121	140	163	179
White	1	5	2	3	3
Asian	24	20	31	29	24
Hispanic	1	1	1	4	4
Amer. Ind. or Alask. Native	1	0	1	0	0
Native Haw. or Other Pac. Isl.					0
Two or More Races					4
Non Resident Alien	4	4	5	3	9
Unknown	25	29	25	13	3
Grand Total	139	180	205	215	226

6b. Female Freshman Enrollment by Racial/Ethnic Status Fall Semester 2006 - 2010					
Race/Ethnicity¹	2006	2007	2008	2009	2010
Black or African American	220	365	466	457	480
White	5	6	6	9	10
Asian	15	39	31	28	23
Hispanic	2	4	3	4	16
Amer. Ind. or Alask. Native	1	0	1	0	1
Native Haw. or Other Pac. Isl.					0
Two or More Races					10
Non Resident Alien	12	12	9	6	7
Unknown	50	58	57	46	6
Grand Total	305	484	573	550	553

¹ The U.S. Office of Management and Budget published new standards for Federal agencies on the collection of racial and ethnic data. The categories do not denote scientific definitions of anthropological origins. The designations are used to categorize U.S. citizens, resident aliens, and other eligible non-citizens. SOURCE: <http://nces.ed.gov/ipeds/reic/definitions.asp>

6. Freshman Enrollment by Gender and Racial/Ethnic Status
Fall Semester 2006 - 2010, cont.

