

I. Freshman Class

During the fall 2008 term, seven hundred and seventy-eight students enrolled as new first-time freshmen. Post-Katrina, Xavier continues to see growth. The freshman class of 2008 is at a mark of slightly over 75% of the class of 2004, our last new first-time freshmen class pre-Katrina. This marked increase mirrors the renewed faith that others have in the city of New Orleans as well Xavier University of Louisiana. What follows in the next few pages are demographic snapshots of the freshmen class of 2008.

Table 1 shows the enrollment of freshmen from local high schools. Our student yield from local parochial schools has remained steady. Tables 2a and 2b display SAT and ACT scores of entering freshmen respectively.

The distribution of freshman majors has remained consistent (See Table 3). For the last five years, nearly three-fourths of the first-time freshmen major in the natural sciences with the remaining 25% in other disciplines. Hurricane Katrina did not have an impact in the distribution yield of majors.

Table 4 shows the retention rate over the last decade. Table 5 gives an enrollment analysis by gender and racial/ethnic status of the 2008 freshman class. While Xavier is a predominantly Black university, students of other ethnic origins are members of the freshman class of 2008.

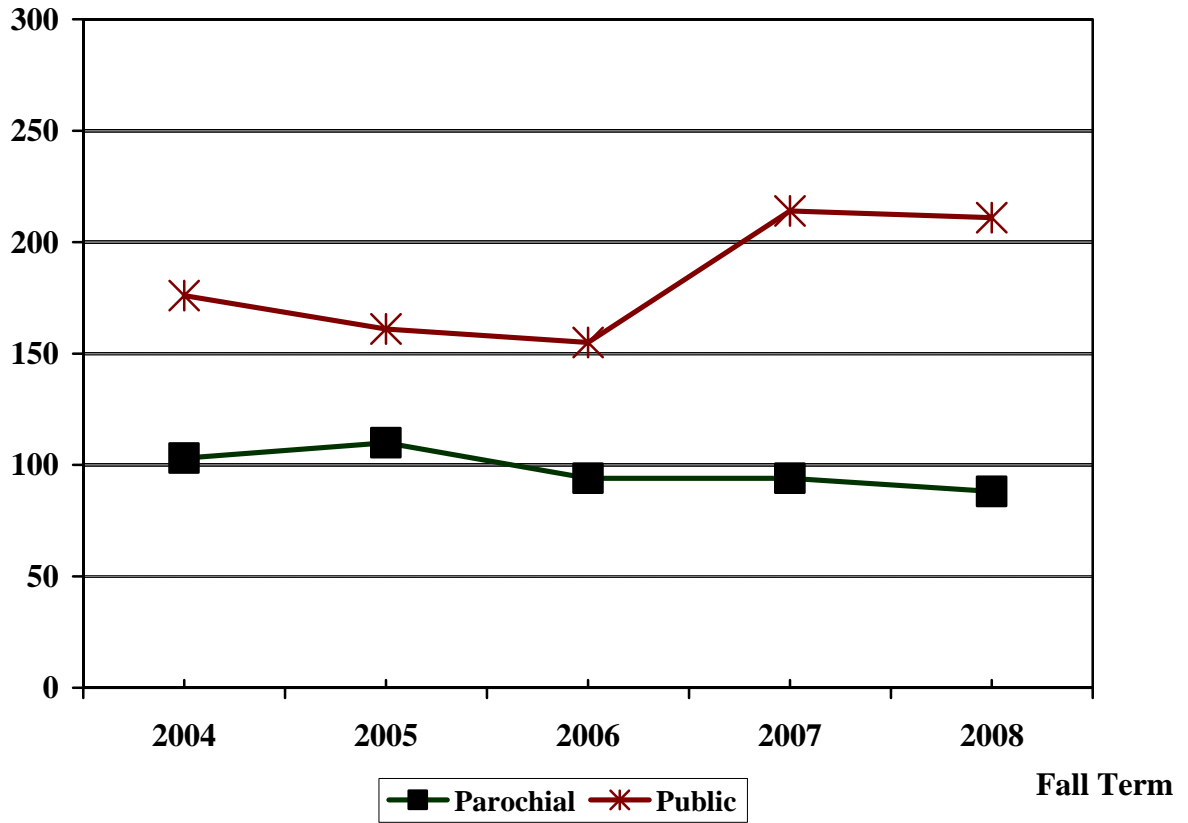
1. Originating High Schools New Orleans and Local Louisiana, 2004 - 2008¹						
TYPE	HIGH SCHOOL	2004	2005²	2006	2007	2008
Parochial	Brother Martin	8	6	3	8	2
	Cabrini	10	7	4	6	7
	De La Salle	3	10	7	5	5
	St. Mary's Dominican	7	7	6	4	3
	Jesuit	2	0	1	2	3
	Redeemer-Seton ³	4	4	2	--	--
	St. Augustine	18	19	18	13	17
	St. Mary's Academy	7	3	7	13	12
	Ursuline Academy	4	2	2	4	4
	Xavier Preparatory	11	14	15	15	15
	Others	29	38	29	24	20
		TOTAL	103	110	94	94
Public	Alcee Fortier ³	1	1	--	--	--
	Ben Franklin	5	10	6	18	9
	Walter L. Cohen	2	0	0	0	0
	Warren Easton	22	18	0	11	24
	Edna Karr High	15	15	15	9	27
	John F. Kennedy ³	6	2	--	--	--
	John McDonogh 35	20	19	10	17	17
	Eleanor McMain Magnet	22	13	12	23	13
	Marion Abramson ³	2	13	0	0	0
	O. Perry Walker	5	2	1	3	3
	Sarah T. Reed	4	1	0	2	3
	Others	72	67	111	131	115
		TOTAL	176	161	155	214

¹ DATA SOURCE: 2008 *Freshman Profile*, published by the Office of Admissions.

² Post – Katrina enrollment from local high schools

³ High School has not reopened Post-Katrina.

Originating High Schools New Orleans Area, 2004 – 2008, Cont.



2a. Average SAT Combined Scores of Entering Freshmen Fall Semesters 2004- 2008¹					
GROUP	2004	2005	2006	2007	2008
National	1026	1028	1021	1017	1017
Louisiana	1125	1127	1141	1136	1130
African American	857	864	863	862	856
Xavier^{2,3} (number of students)	979 (519)	973 (517)	925 (117)	929 (198)	935 (240)
Unrestricted students (number of students)	982 (508)	980 (499)	927 (113)	942 (188)	941 (234)
Restricted students (number of students)	828 (11)	776 (18)	885 (4)	689 (10)	708 (6)

2b. Average ACT Composite Scores of Entering Freshmen Fall Semesters 2004 – 2008¹					
GROUP	2004	2005	2006	2007	2008
National	20.9	20.9	21.1	21.2	21.3
Louisiana	19.8	19.8	20.1	20.1	20.3
African American	17.1	17.0	17.1	17.0	16.9
Xavier^{2,3} (number of students)	21.1 (765)	20.7 (770)	20.2 (395)	20.6 (557)	20.4 (650)
Unrestricted students (number of students)	21.2 (745)	20.9 (735)	20.4 (378)	20.8 (532)	20.6 (617)
Restricted students (number of students)	16.4 (20)	16.3 (35)	16.1 (17)	16.6 (25)	15.7 (33)

¹ DATA SOURCE: 2008 *Freshman Profile*, published by the Office of Admissions.

² Students admitted on a probationary basis who must take a restricted schedule.

³ Fall 2005 cohort reflects first time freshman enrolled prior to Hurricane Katrina.

3. Trend in Freshman Enrollment by Major Fall Semesters 2004 - 2008¹

DEPARTMENT/MAJOR	2004	2005	2006	2007	2008
Business (%)	64 (6%)	36 (6%)	23 (5%)	38 (6%)	48 (6%)
Humanities					
Art	3	2	1	2	3
English	7	2	2	4	7
Languages	0	2	0	3	1
Mass Communications	25	13	10	13	14
Music	5	8	4	10	8
Philosophy	0	0	0	2	0
Speech Pathology	4	0	1	4	5
Theology	1	0	1	0	1
TOTAL (%)	45 (4%)	27 (4%)	19 (4%)	38 (6%)	39 (5%)
Natural Sciences					
Biology	417	259	134	249	301
Chemistry	53	27	18	47	55
Chemistry (Pre-Pharmacy)	236	169	145	198	214
Comp. Sci./Comp. Engin. ²	16	9	11	4	9
Mathematics	4	2	1	1	1
Physics/Engineering	18	9	4	5	14
TOTAL (%)	744 (74%)	475 (73%)	313 (70%)	504 (76%)	594 (76%)
Social Sciences					
Education/H&PE ³	2	11	10	13	11
History	1	2	0	2	2
Political Science	24	14	6	8	11
Psychology	82	64	28	55	63
Sociology	6	2	2	2	9
TOTAL (%)	115 (11%)	93 (14%)	46 (10%)	80 (12%)	96 (12%)
Deciding⁴ (%)	33 (3%)	26 (4%)	50 (11%)	---	---
Office of Academic Enhancement (%)	---	---	---	12 (2%)	7 (1%)
Grand Total	1001⁵	654⁵	444⁵	664⁵	778⁵

¹ DATA SOURCE: Registrar's Office and the 2007 *Freshman Profile* published by the Office of Admissions.

² Computer Engineering offered as a major beginning in the Fall 2000 term.

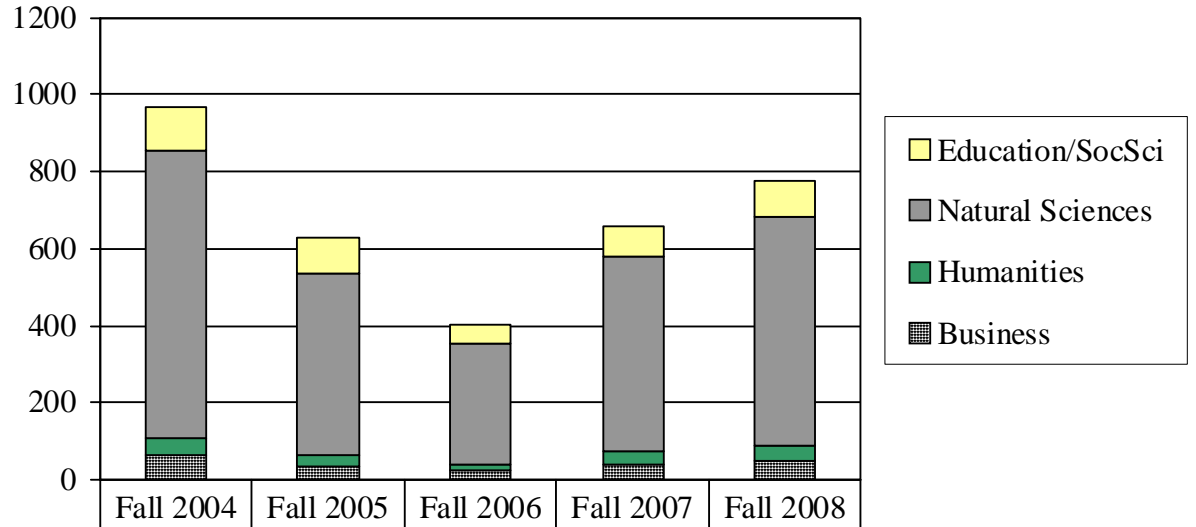
³ Secondary education majors are included under Education/H&PE and also in their major field of discipline. They are included only once in the Grand Total.

⁴ Deciding Majors are now advised by the Office of Academic Enhancement.

⁵ College credits earned prior to coming to Xavier as a first – time freshman:

In 2004, 8 classified as sophomores and 1 classified as a junior; in 2005, 1 classified as a sophomore; in 2006, 1 classified as a junior; in 2007, 2 classified as sophomores and 1 classified as a junior; and in 2008 4 classified as sophomores.

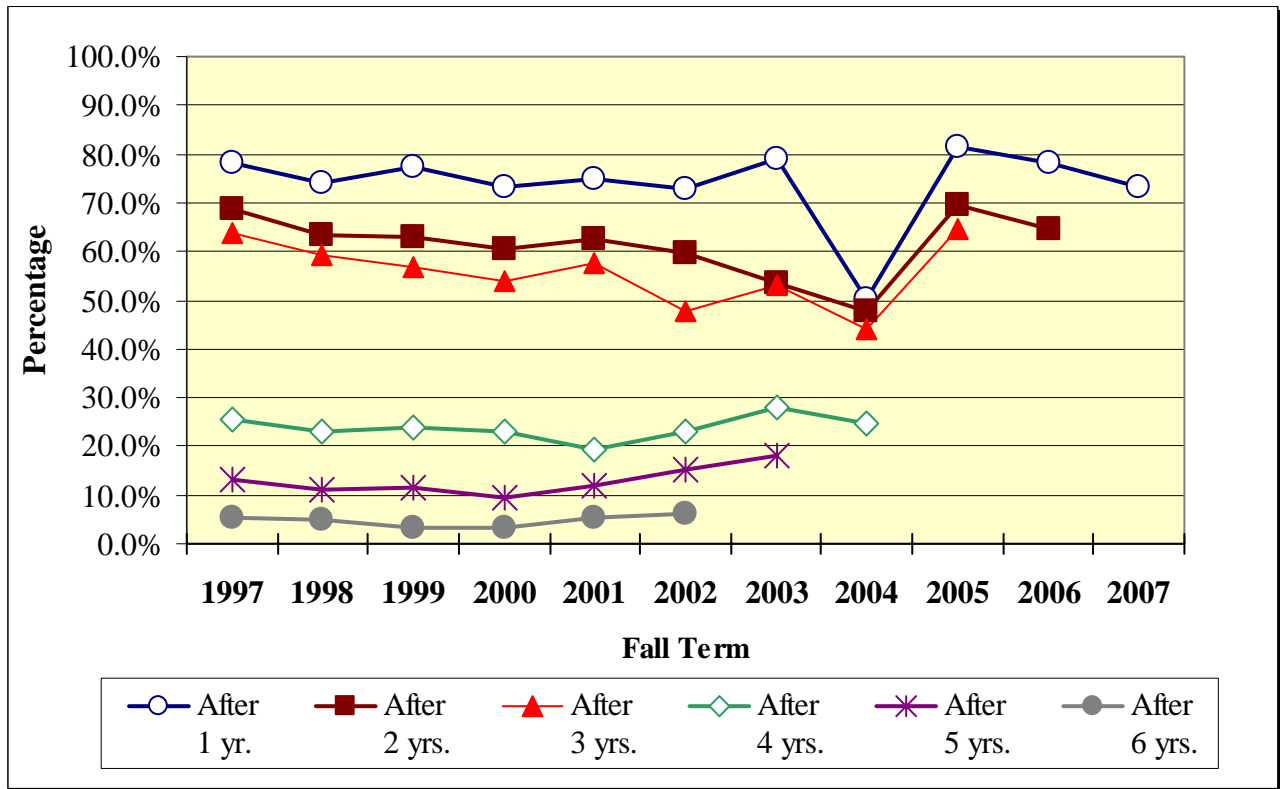
4. Trend in New Freshman Enrollment by Major Fall Semesters 2004-2008, *cont'd.*



Education/SocSci	115	93	46	80	96
Natural Sciences	744	475	313	504	594
Humanities	45	27	19	38	39
Business	64	36	23	38	48

4. Retention Rate of Recent Classes¹

Fall Term	# Enrolled ²	After 1 yr.	After 2 yrs.	After 3 yrs.	After 4 yrs. ³	After 5 yrs. ³	After 6 yrs. ³
1998	846	73.9%	63.2%	59.1%	23.0%	11.0%	4.8%
1999	898	77.2%	63.1%	56.7%	23.8%	11.7%	3.5%
2000	833	73.1%	60.6%	53.8%	22.9%	9.4%	3.1%
2001	893	74.8%	62.7%	57.6%	19.3%	11.8%	5.2%
2002	976	72.7%	59.6%	47.7%	23.1%	15.2%	6.3%
2003	917	79.0%	53.4%	52.9%	27.9%	18.2%	
2004	1001	50.2% ⁴	47.6%	44.2%	24.7%		
2005	654	81.3%	69.4%	64.5%			
2006	444	78.2%	64.4%				
2007	664	73.3%					



¹ DATA SOURCE: Registrar’s Office and the Office of Planning and Institutional Research.

² Includes the number of new full-time and part-time freshmen; transfers are not included. Includes all freshmen, not just those in four-year programs.

³ By the 4th, 5th and 6th years, graduations as well as non-returning students lower the retention rate.

⁴ Fall 2004 Cohort that returned for the Fall 2005 term after Hurricane Katrina.

**5. Freshman Enrollment
 by Gender and Racial/Ethnic Status
 Fall Semester 2004 - 2008**

Ethnicity	2004		2005		2006		2007		2008	
	Male	Female	Male	Female	Male	Female	Male	Female	Male	Female
Black Non-Hispanic	199	667	139	385	83	220	121	365	140	466
White Non-Hispanic	5	6	1	4	1	5	5	6	2	6
Asian/Asian American	19	28	17	28	24	15	20	39	31	31
Hispanic	1	5	0	2	1	2	1	4	1	3
Amer. Ind./Alask. Native	0	1	0	0	1	1	0	0	1	1
Non Resident Alien	4	9	2	7	4	12	4	12	5	9
Unknown	19	38	25	44	25	50	29	58	25	57
Grand Total	247	754	184	470	139	305	180	484	205	573

5. Freshman Enrollment by Racial/Ethnic Status Fall Semester 2004 - 2008, cont.

