

### **III. Graduates**

The graduation rate of new freshman students since 2006 enrolled in 4-year programs (excluding Pre-Pharmacy new freshman students) is shown in Table 22.

Table 23a shows the matriculation rate into the College of Pharmacy for new Pre-Pharmacy freshman students. Matriculation rate, defined as entry (P1 status) into the College of Pharmacy, ideally occurs after the second year of matriculation at Xavier (IPEDS designates this as 100% completion rate for students not in a 4-year program). Matriculation rates in the third and fourth year are also shown. Table 23b shows the College of Pharmacy's graduation rates for new P1 cohorts.

Table 24 shows degrees granted, by type of degree, within the College of Arts & Sciences, the College of Pharmacy, and the Graduate School.

Since Xavier's enrollment is heaviest in the sciences, these divisions have the largest percentage of graduates within the College of Arts & Sciences, as is shown in Table 25 (note that present division/major distribution, as of 2014–15, is shown in all tables and is applied to past data). Table 26a provides the number of graduates, by ethnicity and gender, in each academic discipline within the College of Arts & Sciences. Table 26b provides same breakdown for the graduates of the College of Pharmacy and those of the Graduate School.

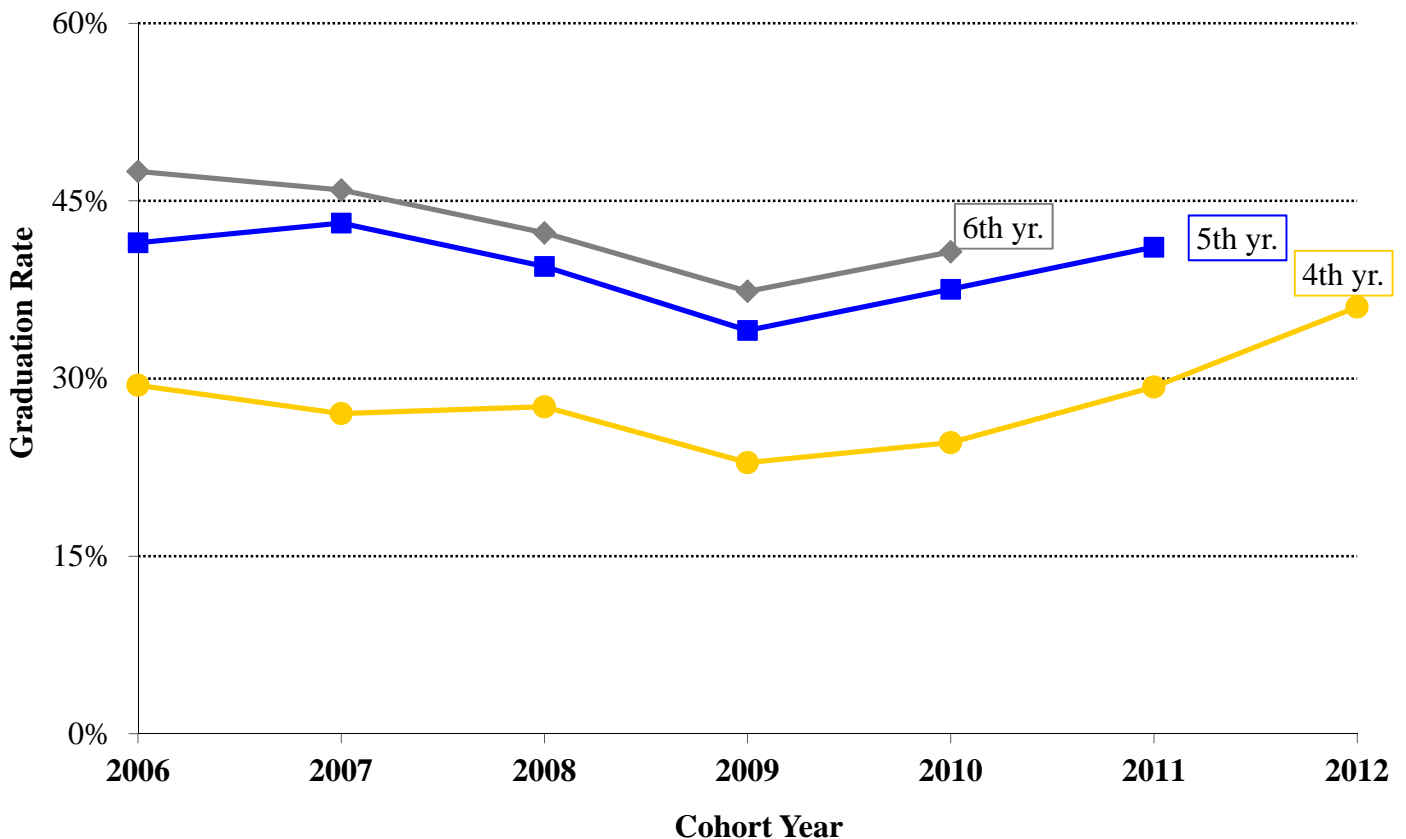
Xavier's students are attending graduate and professional schools at a rate that reflects the efforts of Xavier faculty, staff and administration. Data on Fall 2016 graduate/professional school attendance, from the National Student Clearinghouse, is presented in Tables 27 – 29. As shown in Table 27, the percent of students from the College of Arts and Sciences who enrolled in graduate/professional school in the fall or spring semester after graduation was 30.9% for 2015–16 graduates. Within the division of Mathematical & Physical Sciences, just over 2 of every 5 students attended graduate/professional school during the fall semester after graduation.

Table 28 lists graduates of the College of Arts & Sciences by division and major from 2011–12 to 2015–16, and the number within each major who attended graduate/professional school in the fall semester following graduation. Table 29 highlights the disciplines and areas of concentration in which our 2014–15 graduates are pursuing their graduate/professional degrees.

Table 30 indicates the breakdown of graduates from Xavier's Graduate School by major and type of degree.

**22. Graduation Rate of Recent Classes<sup>1</sup>**  
**(Based on Freshmen in 4–Year Programs)**

Freshman Class	# Enrolled	4th yr. <sup>2</sup>		5th yr. <sup>2</sup>		6th yr. <sup>2</sup>		7th yr. <sup>2</sup>		8th yr. <sup>2</sup>	
		#	%	#	%	#	%	#	%	#	%
2006	299	88	29.4%	124	41.5%	142	47.5%	149	49.8%	149	49.8%
2007	466	126	27.0%	201	43.1%	214	45.9%	221	47.4%	223	47.9%
2008	565	156	27.6%	223	39.5%	239	42.3%	245	43.4%	249	44.1%
2009	546	125	22.9%	186	34.1%	204	37.4%	210	38.5%		
2010	602	148	24.6%	226	37.5%	245	40.7%				
2011	618	181	29.3%	254	41.1%						
2012	505	182	36.0%								
<b>TOTAL<sup>3</sup></b>	<b>3,601</b>	<b>1,006</b>	<b>27.9%</b>	<b>1,214</b>	<b>39.2%</b>	<b>1,044</b>	<b>42.1%</b>	<b>825</b>	<b>44.0%</b>	<b>621</b>	<b>46.7%</b>

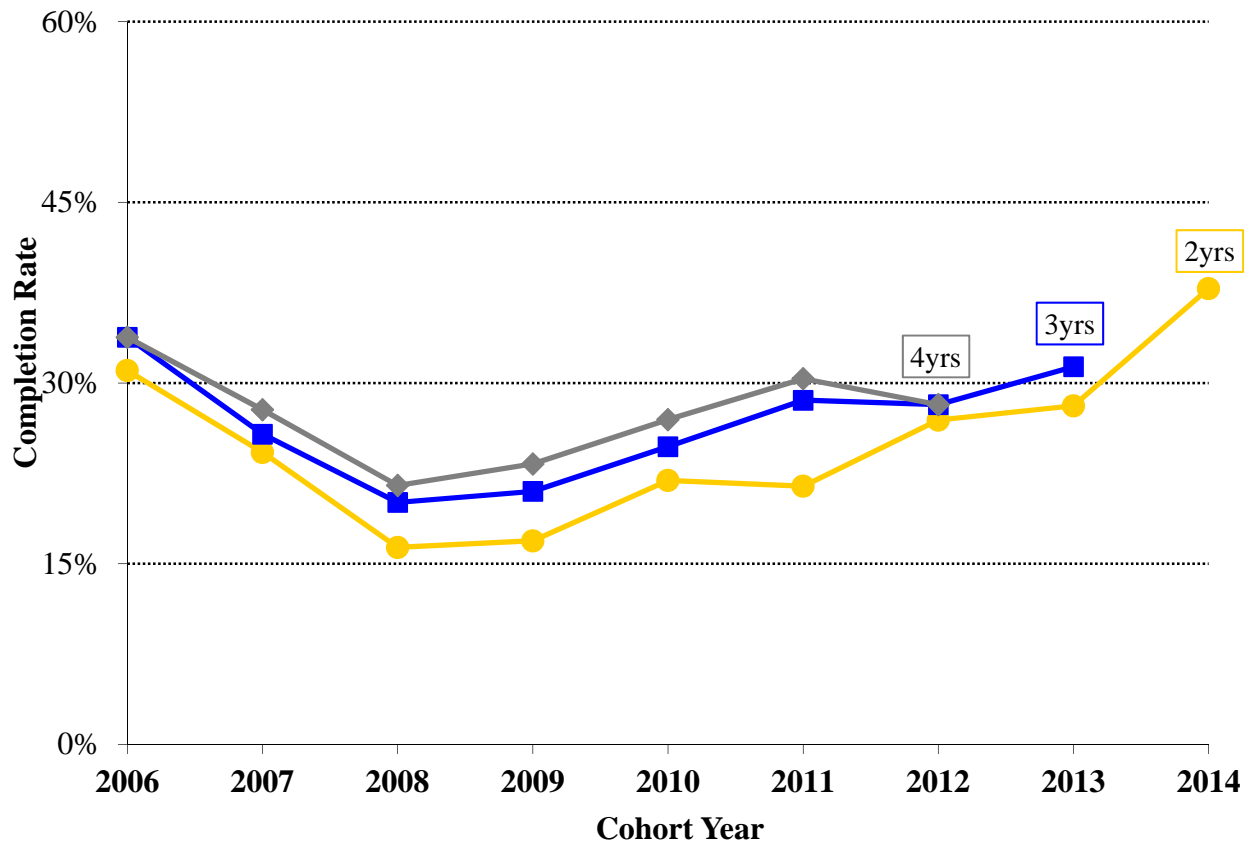


<sup>1</sup> DATA SOURCE: Registrar’s Office. Information as of December 1, 2016.

<sup>2</sup> “#” indicates cumulative number of graduates; “%” indicates percentage of original cohort.

<sup>3</sup> TOTAL indicates sum of years shown within each column. Percentage for same is based on sum of graduates within column divided by sum of same year cohorts. For example, in “8<sup>TH</sup> yr” only first three rows of cohorts are summed.

23a. Matriculation Rate into College of Pharmacy <sup>1</sup> (Based on Freshmen in Pre-Pharmacy Programs)							
Freshman Class	# Enrolled	P1 after 2nd year <sup>2</sup>		P1 after 3rd year <sup>2</sup>		P1 after 4th year <sup>2</sup>	
		#	%	#	%	#	%
2006	145	45	31.0%	49	33.8%	49	33.8%
2007	198	48	24.2%	51	25.8%	55	27.8%
2008	214	35	16.4%	43	20.1%	46	21.5%
2009	219	37	16.9%	46	21.0%	51	23.3%
2010	178	39	21.9%	44	24.7%	48	27.0%
2011	168	36	21.4%	48	28.6%	51	30.4%
2012	156	42	26.9%	44	28.2%		
2013	185	52	28.1%	58	31.4%		
2014	148	56	37.8%				
<b>TOTAL<sup>3</sup></b>	<b>1,611</b>	<b>390</b>	<b>24.2%</b>	<b>383</b>	<b>26.2%</b>	<b>344</b>	<b>26.9%</b>



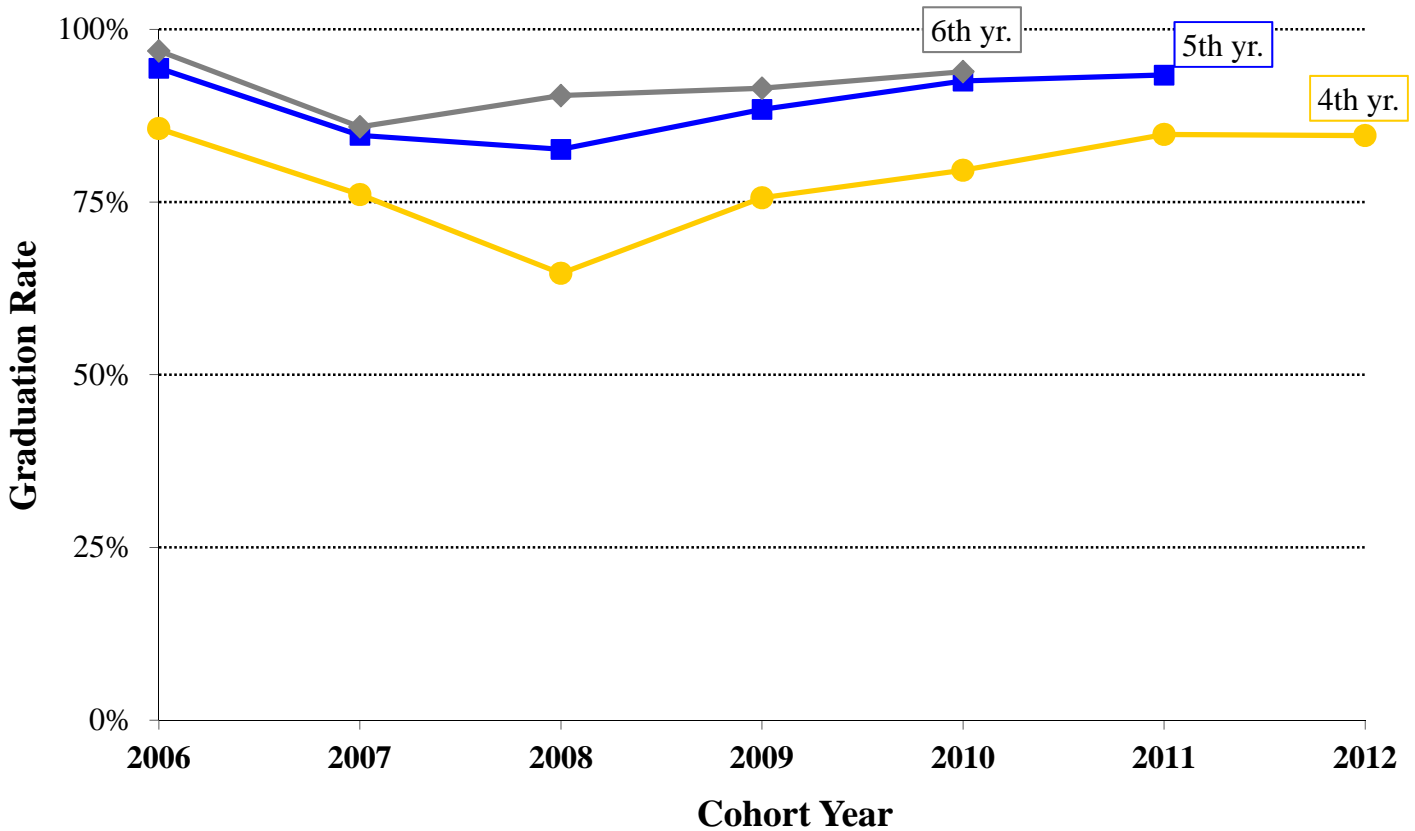
<sup>1</sup> DATA SOURCE: Registrar’s Office. Information as of December 1, 2016.

<sup>2</sup> “#” indicates cumulative number of graduates; “%” indicates percentage of original cohort.

<sup>3</sup> TOTAL indicates sum of years shown within each column. Percentage for same is based on sum of graduates divided by sum of cohorts.

**23b. Graduation Rate — College of Pharmacy<sup>1</sup>**  
**(Based on Cohorts of New P1 Students)**

COP Cohort	# Enrolled	4th yr. <sup>2</sup>		5th yr. <sup>2</sup>		6th yr. <sup>2</sup>		7th yr. <sup>2</sup>		8th yr. <sup>2</sup>	
		#	%	#	%	#	%	#	%	#	%
2006	160	137	85.6%	151	94.4%	155	96.9%	155	96.9%	155	96.9%
2007	163	124	76.1%	138	84.7%	140	85.9%	143	87.7%	144	88.3%
2008	167	108	64.7%	138	82.6%	151	90.4%	151	90.4%	152	91.0%
2009	164	124	75.6%	145	88.4%	150	91.5%	151	92.1%		
2010	147	117	79.6%	136	92.5%	138	93.9%				
2011	151	128	84.8%	141	93.4%						
2012	143	121	84.6%								
<b>TOTAL<sup>3</sup></b>	<b>1,095</b>	<b>859</b>	<b>78.4%</b>	<b>849</b>	<b>89.2%</b>	<b>734</b>	<b>91.6%</b>	<b>600</b>	<b>91.7%</b>	<b>451</b>	<b>92.0%</b>

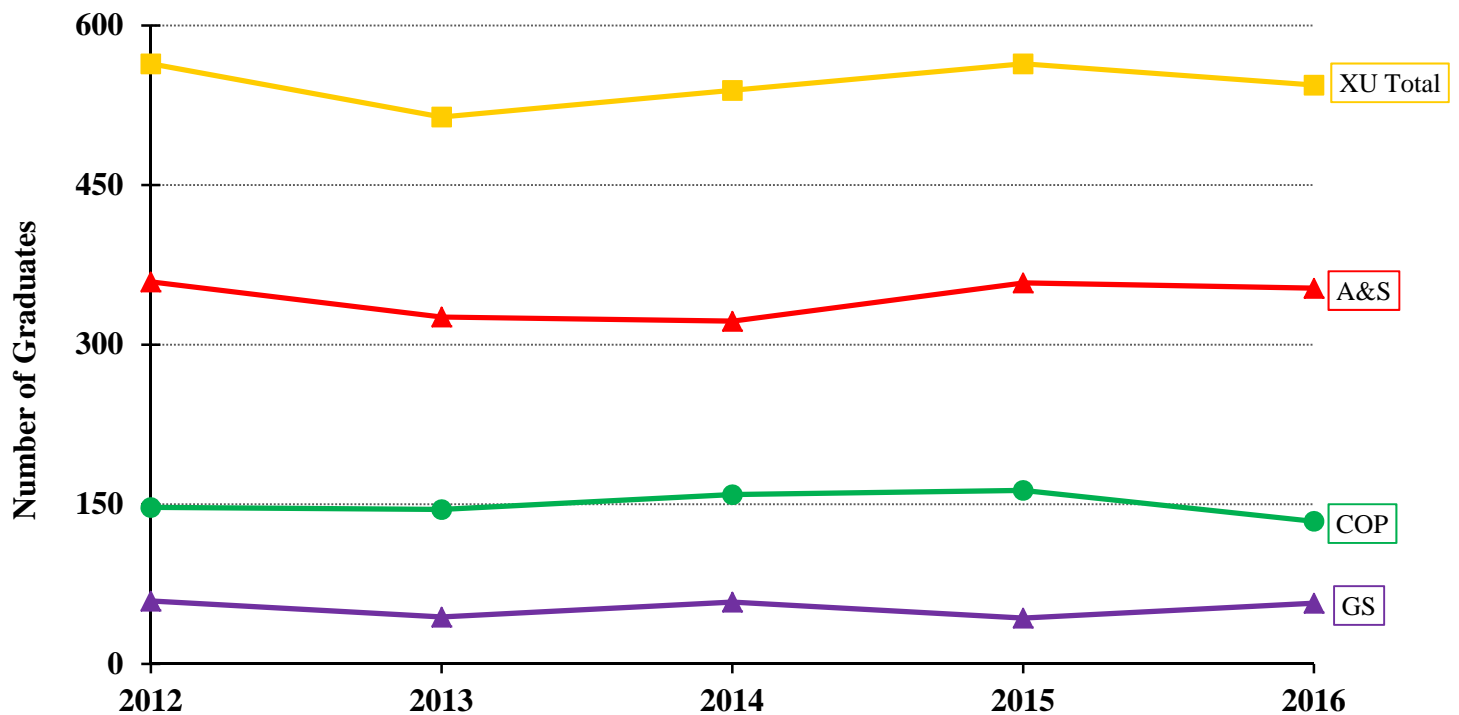


<sup>1</sup> DATA SOURCE: Registrar’s Office. Information as of December 1, 2016.

<sup>2</sup> “#” indicates cumulative number of graduates; “%” indicates percentage of original cohort.

<sup>3</sup> TOTAL indicates sum of years shown within each column. Percentage for same is based on sum of graduates within column divided by sum of same year cohorts. For example, in “8<sup>TH</sup> yr” only first three rows of cohorts are summed.

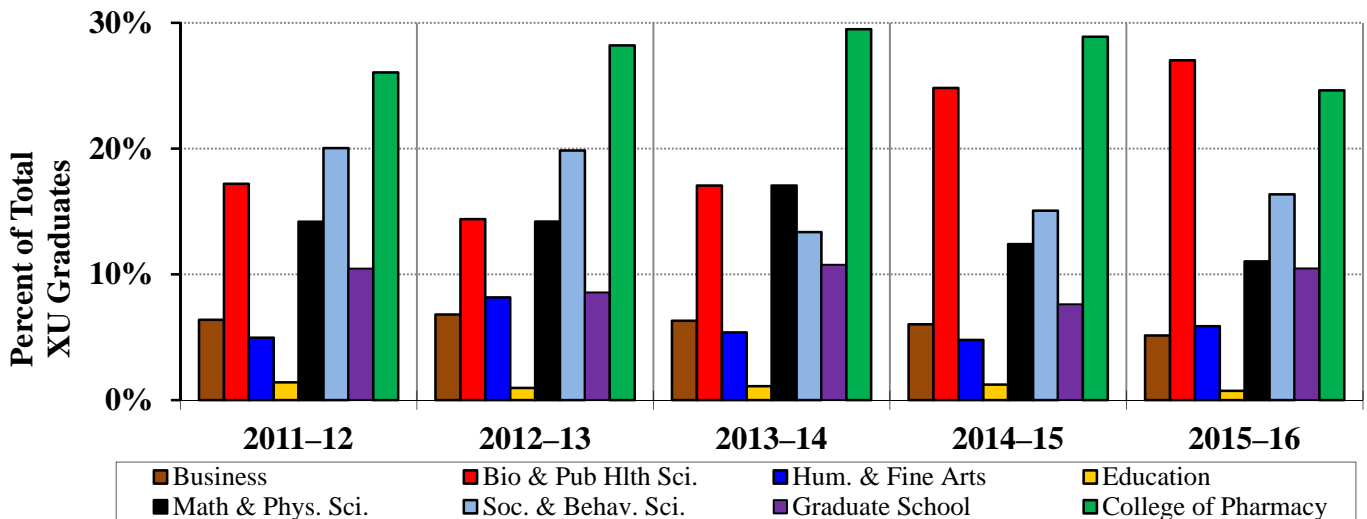
24. Xavier Graduates by Degree, 2012 – 2016 <sup>1</sup>						
COLLEGE/DEGREE	2012	2013	2014	2015	2016	5-yr. Avg.
<b>College of Arts &amp; Sciences</b>						
Bachelor of Science	275	234	261	285	250	261.0
Bachelor of Arts	84	92	61	70	106	82.6
Bachelor of Music	1	3	1	3	0	1.6
<b>Total Arts &amp; Sciences<sup>2</sup></b>	<b>359</b>	<b>326</b>	<b>322</b>	<b>358</b>	<b>353</b>	<b>343.6</b>
<b>College of Pharmacy</b>						
Doctor of Pharmacy	147	145	159	163	134	149.6
<b>Total Pharmacy</b>	<b>147</b>	<b>145</b>	<b>159</b>	<b>163</b>	<b>134</b>	<b>149.6</b>
<b>Graduate School</b>						
Master of Arts	36	25	27	29	33	30.0
Master of Arts in Teaching	21	17	28	13	20	19.8
Master of Theology	2	2	3	1	4	2.4
<b>Total Graduate School</b>	<b>59</b>	<b>44</b>	<b>58</b>	<b>43</b>	<b>57</b>	<b>52.2</b>
<b>UNIVERSITY TOTAL<sup>2</sup></b>	<b>564</b>	<b>514</b>	<b>539</b>	<b>564</b>	<b>544</b>	<b>545.0</b>



<sup>1</sup> DATA SOURCE: Registrar's Office. Information as of December 1, 2016.

<sup>2</sup> Total adjusted for students with double majors and dual degrees.

25. Percentage of Graduates by Academic Division 2012 – 2016 <sup>1</sup>										
COLLEGE DIVISION <sup>2</sup>	2011–12		2012–13		2013–14		2014-15		2015-16	
	#	%	#	%	#	%	#	%	#	%
<b>College of Arts and Sciences</b>										
Biolog. & Pub. Hlth Sci.	97	17.2%	74	14.4%	92	17.1%	140	24.8%	147	27.0%
Business	36	6.4%	35	6.8%	34	6.3%	34	6.0%	28	5.1%
Education (UG) <sup>3</sup>	8	1.4%	5	1.0%	6	1.1%	7	1.2%	4	0.7%
Humanities & Fine Arts	28	5.0%	42	8.2%	29	5.4%	27	4.8%	32	5.9%
Math & Physical Sci.	80	14.2%	73	14.2%	92	17.1%	70	12.4%	60	11.0%
Social & Behav. Sci.	113	20.0%	102	19.8%	72	13.4%	85	15.1%	89	16.4%
<b>TOTAL<sup>4</sup></b>	<b>359</b>	<b>63.7%</b>	<b>326</b>	<b>63.4%</b>	<b>322</b>	<b>59.7%</b>	<b>358</b>	<b>63.5%</b>	<b>353</b>	<b>64.9%</b>
<b>College of Pharmacy</b>										
<b>TOTAL</b>	<b>147</b>	<b>26.1%</b>	<b>145</b>	<b>28.2%</b>	<b>159</b>	<b>29.5%</b>	<b>163</b>	<b>28.9%</b>	<b>134</b>	<b>24.6%</b>
<b>Graduate School</b>										
Education & Counseling	57	10.1%	42	8.2%	55	10.2%	42	7.4%	53	9.7%
Black Catholic Studies	2	0.4%	2	0.4%	3	0.6%	1	0.2%	4	0.7%
<b>TOTAL</b>	<b>59</b>	<b>10.5%</b>	<b>44</b>	<b>8.6%</b>	<b>58</b>	<b>10.8%</b>	<b>43</b>	<b>7.6%</b>	<b>57</b>	<b>10.5%</b>
<b>UNIVERSITY TOTAL</b>	<b>564</b>		<b>514</b>		<b>539</b>		<b>564</b>		<b>544</b>	



<sup>1</sup> DATA SOURCE: Registrar's Office. Information as of December 1, 2016. Double majors are included only once in the totals, hence percentages may not total 100%.

<sup>2</sup> New divisional structure, with present (as of AY 2014–15) major distribution, applied to past data.

<sup>3</sup> Secondary Education majors are included both in Education *and* in the division of their major discipline, but are counted only once in the Total.

<sup>4</sup> A&S and University Totals adjusted for students with double majors and dual degrees.

**26a. College of Arts & Sciences —  
Undergraduate Degree Completion<sup>1</sup>  
Ethnicity/Gender by Academic Division  
2015 – 2016**

<b>Race/ Ethnicity</b>	<b>Gender</b>	<b>Biolog. &amp; Pub. Hlth Sciences</b>	<b>Business</b>	<b>Education (UG)</b>	<b>Humanities &amp; Fine Arts</b>	<b>Math &amp; Physical Sciences</b>	<b>Social &amp; Behavioral Sciences</b>	<b>TOTAL<sup>3</sup></b>
<b>Black or African American</b>	<b>Male</b>	25	9	0	8	11	8	60
	<b>Female</b>	94	17	4	20	34	72	235
	<b>Total</b>	<b>119</b>	<b>26</b>	<b>4</b>	<b>28</b>	<b>45</b>	<b>80</b>	<b>295</b>
<b>White</b>	<b>Male</b>	0	0	0	1	0	0	1
	<b>Female</b>	3	0	0	1	0	2	6
	<b>Total</b>	<b>3</b>	<b>0</b>	<b>0</b>	<b>2</b>	<b>0</b>	<b>2</b>	<b>7</b>
<b>Asian</b>	<b>Male</b>	3	0	0	0	6	0	9
	<b>Female</b>	14	0	0	0	4	0	18
	<b>Total</b>	<b>17</b>	<b>0</b>	<b>0</b>	<b>0</b>	<b>10</b>	<b>0</b>	<b>27</b>
<b>Amer. Indian or Alaskan Native</b>	<b>Male</b>	0	0	0	0	0	0	0
	<b>Female</b>	0	0	0	0	0	1	1
	<b>Total</b>	<b>0</b>	<b>0</b>	<b>0</b>	<b>0</b>	<b>0</b>	<b>1</b>	<b>1</b>
<b>Native Hawaiian or Other Pac. Islander</b>	<b>Male</b>	0	0	0	0	0	0	0
	<b>Female</b>	0	0	0	0	0	0	0
	<b>Total</b>	<b>0</b>	<b>0</b>	<b>0</b>	<b>0</b>	<b>0</b>	<b>0</b>	<b>0</b>
<b>Hispanic</b>	<b>Male</b>	0	1	0	0	1	0	2
	<b>Female</b>	0	0	0	1	1	4	6
	<b>Total</b>	<b>0</b>	<b>1</b>	<b>0</b>	<b>1</b>	<b>2</b>	<b>4</b>	<b>8</b>
<b>Two or More Races</b>	<b>Male</b>	1	0	0	0	0	0	1
	<b>Female</b>	4	1	0	0	0	0	5
	<b>Total</b>	<b>5</b>	<b>1</b>	<b>0</b>	<b>0</b>	<b>0</b>	<b>0</b>	<b>6</b>
<b>Non- Resident Alien</b>	<b>Male</b>	1	0	0	0	2	0	3
	<b>Female</b>	1	0	0	1	0	1	3
	<b>Total</b>	<b>2</b>	<b>0</b>	<b>0</b>	<b>1</b>	<b>2</b>	<b>1</b>	<b>6</b>
<b>Race/ Ethnicity Unknown</b>	<b>Male</b>	1	0	0	0	0	0	1
	<b>Female</b>	0	0	0	0	1	1	2
	<b>Total</b>	<b>1</b>	<b>0</b>	<b>0</b>	<b>0</b>	<b>1</b>	<b>1</b>	<b>3</b>
<b>GRAND TOTAL<sup>2</sup></b>	<b>Male</b>	<b>31</b>	<b>10</b>	<b>0</b>	<b>9</b>	<b>20</b>	<b>8</b>	<b>77</b>
	<b>Female</b>	<b>116</b>	<b>18</b>	<b>4</b>	<b>23</b>	<b>40</b>	<b>81</b>	<b>276</b>
	<b>Total</b>	<b>147</b>	<b>28</b>	<b>4</b>	<b>320</b>	<b>60</b>	<b>89</b>	<b>353</b>

<sup>1</sup> DATA SOURCE: Registrar's Office. Information as of December 1, 2016.

<sup>2</sup> Secondary Education majors are included both in Education *and* in the division of their major discipline, but are counted only once in the Total. Double majors and dual degrees are included only once in the totals.

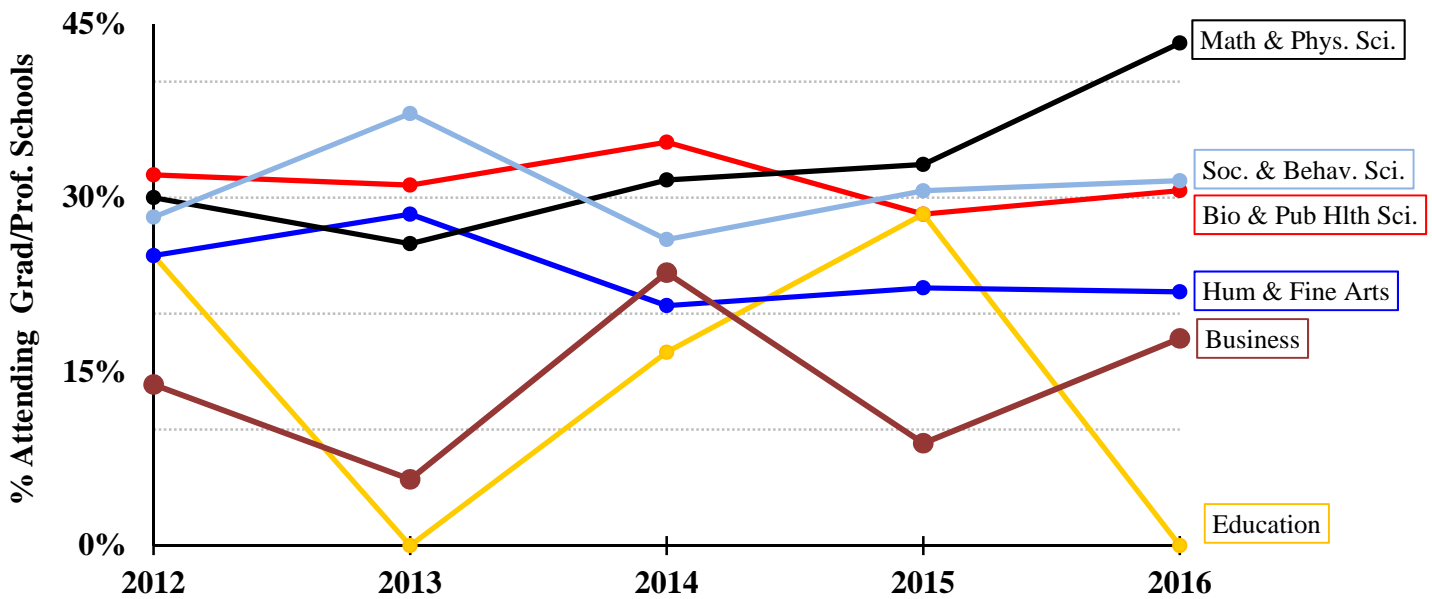
<b>26b. First Professional and Masters Degree Completion by Ethnicity/Gender 2015 – 2016<sup>1</sup></b>					
<b>Race/Ethnicity</b>	<b>Gender</b>	<b>College of Pharmacy</b>	<b>Graduate School</b>		
		<b>TOTAL First-Professional Degrees</b>	<b>Education &amp; Counseling (Graduate)</b>	<b>Institute for Black Catholic Studies</b>	<b>TOTAL Masters Degrees</b>
<b>Black or African American</b>	<b>Male</b>	15	6	1	7
	<b>Female</b>	32	40	1	41
	<b>Total</b>	<b>47</b>	<b>46</b>	<b>2</b>	<b>48</b>
<b>White</b>	<b>Male</b>	6	1	1	2
	<b>Female</b>	17	2	0	2
	<b>Total</b>	<b>23</b>	<b>3</b>	<b>1</b>	<b>4</b>
<b>Asian</b>	<b>Male</b>	20	0	0	0
	<b>Female</b>	26	0	0	0
	<b>Total</b>	<b>46</b>	<b>0</b>	<b>0</b>	<b>0</b>
<b>Amer. Indian or Alaskan Native</b>	<b>Male</b>	0	0	0	0
	<b>Female</b>	0	0	0	0
	<b>Total</b>	<b>0</b>	<b>0</b>	<b>0</b>	<b>0</b>
<b>Native Hawaiian or Other Pacific Islander</b>	<b>Male</b>	0	0	1	1
	<b>Female</b>	0	0	0	0
	<b>Total</b>	<b>0</b>	<b>0</b>	<b>1</b>	<b>1</b>
<b>Hispanic</b>	<b>Male</b>	1	1	0	1
	<b>Female</b>	3	1	0	1
	<b>Total</b>	<b>4</b>	<b>2</b>	<b>0</b>	<b>2</b>
<b>Two or More Races</b>	<b>Male</b>	1	0	0	0
	<b>Female</b>	1	1	0	1
	<b>Total</b>	<b>2</b>	<b>1</b>	<b>0</b>	<b>1</b>
<b>Non Resident Alien</b>	<b>Male</b>	2	1	0	1
	<b>Female</b>	6	0	0	0
	<b>Total</b>	<b>8</b>	<b>1</b>	<b>0</b>	<b>1</b>
<b>Race/Ethnicity Unknown</b>	<b>Male</b>	1	0	0	0
	<b>Female</b>	3	0	0	0
	<b>Total</b>	<b>4</b>	<b>0</b>	<b>0</b>	<b>0</b>
<b>GRAND TOTAL</b>	<b>Male</b>	<b>46</b>	<b>9</b>	<b>3</b>	<b>12</b>
	<b>Female</b>	<b>88</b>	<b>44</b>	<b>1</b>	<b>45</b>
	<b>Total</b>	<b>134</b>	<b>53</b>	<b>4</b>	<b>57</b>

<sup>1</sup> DATA SOURCE: Registrar's Office. Information as of December 1, 2016.



**27. Percentage of Graduates  
Attending Graduate/Professional School  
College of Arts & Sciences  
2012 – 2016<sup>1</sup>**

ACADEMIC DIVISION <sup>2</sup>	2012		2013		2014		2015		2016	
	Ratio	%	Ratio	%	Ratio	%	Ratio	%	Ratio	%
Biological & Pub. Hlth Sci.	31/97	32.0%	23/74	31.1%	32/92	34.8%	40/140	28.6%	45/147	30.6%
Business	5/36	13.9%	2/35	5.7%	8/34	23.5%	3/34	8.8%	5/28	17.9%
Education (Undergrad) <sup>3</sup>	2/8	25.0%	0/5	0.0%	1/6	16.7%	2/7	28.6%	0/4	0.0%
Fine Arts & Humanities	7/28	25.0%	12/42	28.6%	6/29	20.7%	6/27	22.2%	7/32	21.9%
Mathematical & Physical Sci.	24/80	30.0%	19/73	26.0%	29/92	31.5%	23/70	32.9%	26/60	43.3%
Social & Behavioral Sci.	32/113	28.3%	38/102	37.3%	19/72	26.4%	26/85	30.6%	28/89	31.5%
<b>TOTAL<sup>4</sup></b>	<b>101/359</b>	<b>28.1%</b>	<b>92/326</b>	<b>28.2%</b>	<b>94/322</b>	<b>29.2%</b>	<b>97/358</b>	<b>27.1%</b>	<b>109/353</b>	<b>30.9%</b>



<sup>1</sup> DATA SOURCE: National Student Clearinghouse. Information as of December 1, 2016.

<sup>2</sup> New divisional structure, with present (as of AY 2014–15) major distribution, applied to past data.

<sup>3</sup> Secondary Education majors are included both in Education *and* in the department of their major discipline, but are counted only once in the Total.

<sup>4</sup> Students with double majors and dual degrees are counted in each major division, but only once in the total.

<b>28. Number of Graduates</b>										
<b>Attending Graduate/Professional Schools</b>										
<b>College of Arts &amp; Sciences — by Division/Major</b>										
<b>2012 – 2016<sup>1</sup></b>										
<b>ACADEMIC DIVISION MAJOR<sup>2</sup></b>	<b>2011–12</b>		<b>2012–13</b>		<b>2013–14</b>		<b>2014-15</b>		<b>2015-16</b>	
	<b># of grads</b>	<b># to G/P</b>	<b># of grads</b>	<b># to G/P</b>	<b># of grads</b>	<b># to G/P</b>	<b># of grads</b>	<b># to G/P</b>	<b># of grads</b>	<b># to G/P</b>
<b>Biological and Public Health Sciences</b>										
Biology	21	6	19	4	14	4	29	5	42	11
Biology Pre-Med	76	25	55	19	77	28	100	31	88	32
Microbiology	0	0	0	0	0	0	0	0	0	0
Science Educ.–Biology <sup>3</sup>	0	0	0	0	0	0	0	0	0	0
Public Health Sciences	—	—	—	—	1	0	11	4	17	2
<b>Biol. &amp; P.H. Sci Total</b>	<b>97</b>	<b>31</b>	<b>74</b>	<b>23</b>	<b>92</b>	<b>32</b>	<b>140</b>	<b>40</b>	<b>147</b>	<b>45</b>
<b>Business</b>										
Accounting	17	4	7	1	10	5	9	1	13	4
B.A. – Finance	2	1	8	0	4	3	6	0	1	1
B.A. – Management	10	0	13	0	14	0	13	1	8	0
B.A. – Marketing <sup>4</sup>	4	0	1	0	—	—	—	—	—	—
Sales and Marketing	3	0	7	1	6	0	6	1	6	0
<b>Business Total</b>	<b>36</b>	<b>5</b>	<b>35</b>	<b>2</b>	<b>34</b>	<b>8</b>	<b>34</b>	<b>3</b>	<b>28</b>	<b>5</b>
<b>Education (UG)</b>										
Elementary Ed. (1–5)	4	1	3	0	3	0	4	1	2	0
Middle Ed. (4–8)	2	1	0	0	1	0	1	0	0	0
Secondary Education <sup>3</sup>	2	0	2	0	2	1	2	1	2	0
<b>Education (UG) Total</b>	<b>8</b>	<b>2</b>	<b>5</b>	<b>0</b>	<b>6</b>	<b>1</b>	<b>7</b>	<b>2</b>	<b>4</b>	<b>0</b>
<b>Fine Arts &amp; Humanities</b>										
Art	2	0	6	0	0	0	3	0	4	0
Art Education <sup>3</sup>	1	0	0	0	1	1	0	0	0	0
English	10	3	15	6	9	2	9	1	6	2
English/English Ed. <sup>3</sup>	0	0	1	0	1	0	1	1	2	0
French	0	0	0	0	2	0	1	0	1	1
Spanish	4	0	8	3	1	1	3	2	5	1
Spanish Education <sup>3</sup>	0	0	0	0	0	0	0	0	0	0

**28. Number of Graduates  
Attending Graduate/Professional Schools  
College of Arts & Sciences — by Major  
2012 – 2016<sup>1</sup>, cont'd.**

ACADEMIC DIVISION MAJOR <sup>2</sup>	2011–12		2012–13		2013–14		2014-15		2015-16	
	# of grads	# to G/P	# of grads	# to G/P	# of grads	# to G/P	# of grads	# to G/P	# of grads	# to G/P
<b>Fine Arts &amp; Humanities (continued)</b>										
Music Liberal Arts	2	0	0	0	3	1	1	0	5	1
Music Performance	1	0	3	2	1	0	2	1	0	0
Music Education <sup>3</sup>	0	0	0	0	0	0	1	0	0	0
History	4	2	6	0	7	0	4	0	4	1
Social Studies Educ. <sup>3</sup>	0	0	0	0	0	0	0	0	0	0
Philosophy	3	1	2	0	3	1	1	0	2	0
Theology	2	1	1	1	1	0	1	1	3	1
<b>Fine Arts &amp; Hum. Total</b>	<b>28</b>	<b>7</b>	<b>42</b>	<b>12</b>	<b>29</b>	<b>6</b>	<b>27</b>	<b>6</b>	<b>32</b>	<b>7</b>
<b>Mathematical &amp; Physical Sciences</b>										
Chemistry	25	7	20	0	30	7	16	6	15	5
Chemistry ACS	0	0	3	1	4	2	3	1	2	2
Chemistry Pre-Med	25	10	9	6	15	6	12	4	19	13
Chemistry Pre-Pharm	19	6	27	7	24	9	16	5	11	2
Biochemistry	1	0	1	1	2	1	4	1	3	2
Science Educ.–Chem. <sup>3</sup>	1	0	1	0	0	0	0	0	0	0
Computer Science	2	0	4	0	6	1	7	1	5	0
Computer Info. Sys.	0	0	0	0	0	0	1	0	0	0
Computer Engineering	—	—	0	0	0	0	0	0	0	0
Mathematics	2	0	2	2	6	2	7	4	2	2
Mathematics Educ. <sup>3</sup>	0	0	0	0	0	0	0	0	0	0
Physics	5	1	6	2	5	1	4	1	3	0
Dual Degree Engineering <sup>5</sup>	1	1	3	1	4	0	3	0	3	1
<b>Math &amp; Phys. Sci. Total</b>	<b>80</b>	<b>24</b>	<b>73</b>	<b>19</b>	<b>92</b>	<b>29</b>	<b>70</b>	<b>23</b>	<b>60</b>	<b>26</b>

<b>28. Number of Graduates Attending Graduate/Professional Schools College of Arts &amp; Sciences — by Major 2012 – 2016<sup>1</sup>, cont'd.</b>										
<b>ACADEMIC DIVISION MAJOR<sup>2</sup></b>	<b>2011–12</b>		<b>2012–13</b>		<b>2013–14</b>		<b>2014-15</b>		<b>2015-16</b>	
	# of grads	# to G/P	# of grads	# to G/P	# of grads	# to G/P	# of grads	# to G/P	# of grads	# to G/P
<b>Social &amp; Behavioral Sciences</b>										
Communication Studies	—	—	1	0	3	2	0	0	1	0
Mass Communications	15	2	10	1	6	2	8	1	20	3
Speech Pathology	12	2	8	3	10	3	10	2	5	2
Political Science	15	4	9	5	5	1	9	3	11	3
Polit. Science Pre-Law	3	1	2	1	2	0	1	1	1	0
Psychological Science	—	—	—	—	—	—	—	—	23	12
Psychology	46	15	48	18	30	9	39	14	11	3
Psychology Pre-Med	15	5	9	4	7	1	9	4	5	2
Sociology	7	3	15	6	9	1	9	1	12	3
<b>Social &amp; Beh. Sci. Total</b>	<b>113</b>	<b>32</b>	<b>102</b>	<b>38</b>	<b>72</b>	<b>19</b>	<b>85</b>	<b>26</b>	<b>89</b>	<b>28</b>
<b>Arts &amp; Sciences Total<sup>6</sup></b>	<b>359</b>	<b>101</b>	<b>326</b>	<b>92</b>	<b>322</b>	<b>94</b>	<b>358</b>	<b>97</b>	<b>353</b>	<b>109</b>

<sup>1</sup> DATA SOURCES: Office of the Registrar; National Student Clearinghouse. Information as of December 1, 2016.

<sup>2</sup> New divisional structure, with present (as of AY 2014–15) major distribution, applied to past data.

<sup>3</sup> Secondary Education majors are included both in Education *and* in the department of their major discipline, but are counted only once in the Total.

<sup>4</sup> Program discontinued.

<sup>5</sup> Engineering degree received at other university. Students may or may not receive degree from Xavier. Dual Degree Engineering is not reflected in totals.

<sup>6</sup> Students with double majors are counted only once in the Division Total and once in the A&S Total. Students with double majors in the same division or department are shown once only.

<b>29. Number of Graduates attending Professional/Graduate School during Fall 2016<sup>1</sup></b>							
<b>ACADEMIC DIVISION</b>	<b>Biolog. &amp; P.H. Sciences</b>	<b>Business</b>	<b>Education (UG)</b>	<b>Hum. &amp; Fine Arts</b>	<b>Math &amp; Physical Sciences</b>	<b>Social &amp; Behav. Sciences</b>	<b>Unduplic. Total<sup>2</sup></b>
<b>Professional School</b>							
Medical	11	—	—	—	3	—	<b>14</b>
Dental	7	—	—	—	3	—	<b>10</b>
Law	1	—	—	2	—	2	<b>4</b>
Optometry	2	—	—	—	1	—	<b>3</b>
Pharmacy	—	—	—	—	3	—	<b>3</b>
Public Health	5	—	—	1	—	3	<b>9</b>
Veterinary	1	—	—	—	—	—	<b>1</b>
<b>Graduate School</b>							
Graduate Studies	15	—	—	4	16	20	<b>54</b>
Business	1	5	—	—	—	1	<b>7</b>
Post Bacc	2	—	—	—	—	2	<b>4</b>
<b>TOTAL (by division)</b>	<b>45</b>	<b>5</b>	<b>0</b>	<b>7</b>	<b>26</b>	<b>28</b>	<b>109</b>

<sup>1</sup> DATA SOURCES: National Student Clearinghouse. Information as of December 1, 2016.

<sup>2</sup> Students with double majors are included in each division and in the total by division, but only once in the unduplicated total. Secondary Education majors are included both in Education *and* in the division of their major discipline, but are counted only once in the Unduplicated Total. Grand Total (bottom right) is the sum of the Unduplicated Total column.

<b>30. Number of Graduates by Major Graduate Programs<sup>1</sup>, 2012 – 2016</b>					
ACADEMIC DIVISION	2011–12	2012–13	2013–14	2014-15	2015-16
<b>DIVISION OF EDUCATION</b>					
<i>Master of Arts</i>					
<b>Educational Leadership</b>					
Educational Leadership	5	12	10	6	12
<b>Curriculum &amp; Instruction</b>					
Instruction Technology	0	0	0	1	0
Reading Specialist	16	3	2	0	2
Teacher Leader	0	0	0	1	2
Special Interest	—	—	2	2	2
Secondary Education <sup>2</sup>	0	1	—	—	—
<b>Curriculum &amp; Instruction (Total)</b>	<b>16</b>	<b>4</b>	<b>4</b>	<b>4</b>	<b>6</b>
<b>Counseling</b>					
Clinical Mental Health Counseling	2	5	9	14	9
Community Counseling <sup>2</sup>	5	—	—	—	—
Mental Health Counseling <sup>2</sup>	1	—	—	—	—
School Counseling	7	4	4	5	6
<b>Counseling (Total)</b>	<b>15</b>	<b>9</b>	<b>13</b>	<b>19</b>	<b>15</b>
<i>Master of Arts (Total)</i>	<b>36</b>	<b>25</b>	<b>27</b>	<b>29</b>	<b>33</b>
<i>Master of Arts in Teaching</i>					
Elementary Education 1–5	5	1	2	0	1
K–12 Art	0	1	0	0	1
K–12 Health & PE Education	0	0	0	1	1
<b>Secondary Education</b>					
Biology	1	0	0	0	0
Chemistry	0	1	0	0	0
English	2	2	0	1	1
Foreign Language	1	0	0	0	1
General Science	—	—	1	0	0
Mathematics	1	0	1	0	0
Social Studies	1	0	2	0	0
<b>Secondary Education (Total)</b>	<b>6</b>	<b>3</b>	<b>4</b>	<b>1</b>	<b>2</b>

<b>30. Number of Graduates by Major Graduate Programs<sup>1</sup>, 2012 – 2016, <i>cont'd.</i></b>					
<b>ACADEMIC DIVISION</b>	<b>2011–12</b>	<b>2012–13</b>	<b>2013–14</b>	<b>2014-15</b>	<b>2015-16</b>
<b>DIVISION OF EDUCATION (continued)</b>					
<i>Master of Arts in Teaching (continued)</i>					
<b>Special Education</b>					
Special Ed. (Mild/Moderate) <sup>2</sup>	1	—	—	—	—
Special Ed. Elementary 1–5	4	1	2	2	4
Special Ed. MS 4–8 English	1	1	0	0	1
Special Ed. MS 4–8 Math	—	—	4	3	2
Special Ed. MS 4–8 Science	1	0	3	1	0
Special Ed. MS 4–8 Soc Studies	—	—	1	0	1
Special Ed. Sec 6–12 Biology	0	5	3	1	0
Special Ed. Sec 6–12 Chemistry	1	1	3	0	2
Special Ed. Sec 6–12 English	0	2	2	2	2
Special Ed. Sec 6–12 Math	1	1	1	1	2
Special Ed. Sec 6–12 Soc Studies	0	1	3	0	1
Special Ed. Sec 6–12 Spanish	1	0	0	1	0
<b>Special Education (Total)</b>	<b>10</b>	<b>12</b>	<b>22</b>	<b>11</b>	<b>15</b>
<i>Master of Arts in Teaching (Total)</i>	<b>21</b>	<b>17</b>	<b>28</b>	<b>13</b>	<b>20</b>
<b>Education Grad Degrees (Total)</b>	<b>57</b>	<b>42</b>	<b>55</b>	<b>42</b>	<b>53</b>
<b>INSTITUTE OF BLACK CATHOLIC STUDIES</b>					
<i>Master of Theology</i>					
Black Catholic Studies	2	2	3	1	4
<b>TOTAL GRADUATE SCHOOL</b>	<b>59</b>	<b>44</b>	<b>58</b>	<b>43</b>	<b>57</b>

<sup>1</sup> DATA SOURCES: Office of the Registrar; Division of Education. Information as of December 1, 2015.

<sup>2</sup> Discontinued program.