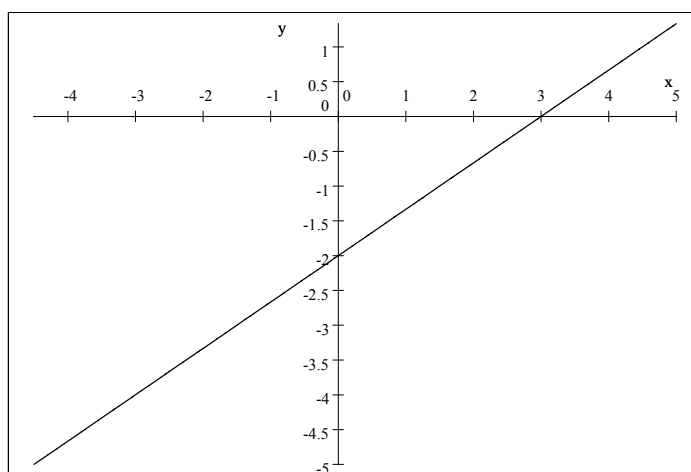


## 8. Graphing linear and quadratic equations

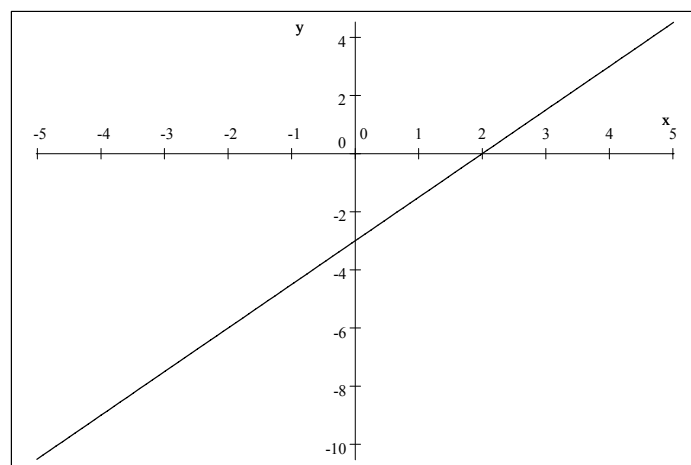
### Practice Problems

Sketch the graph of the following equations:

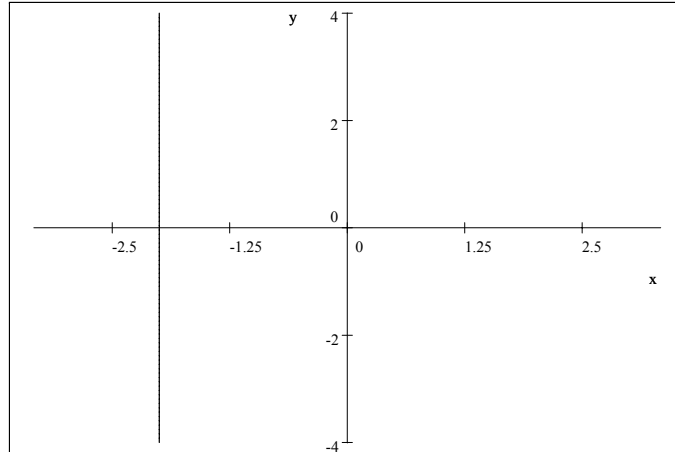
1.  $2x - 3y = 6$



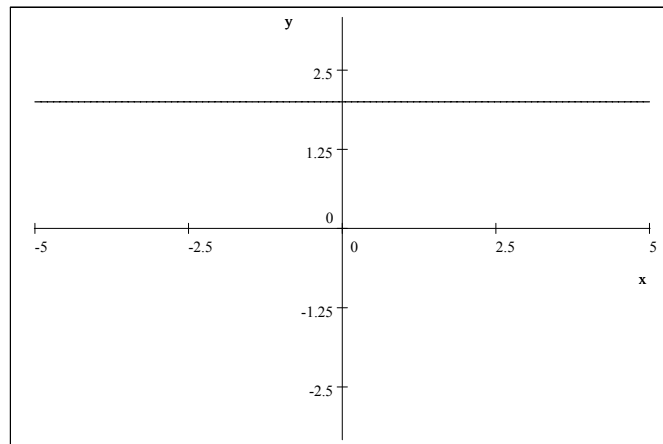
2.  $y = \frac{3}{2}x - 3$



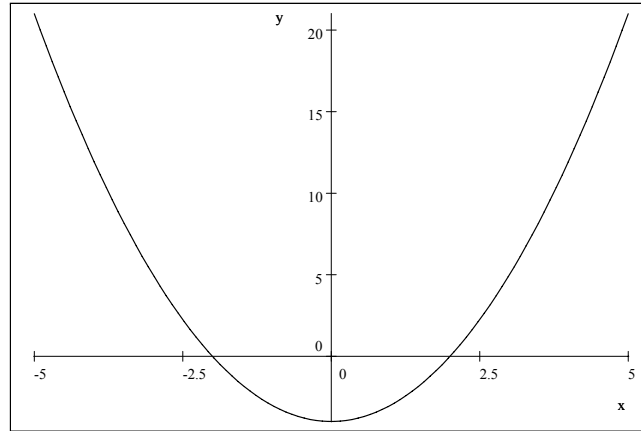
3.  $3x + 6 = 0$



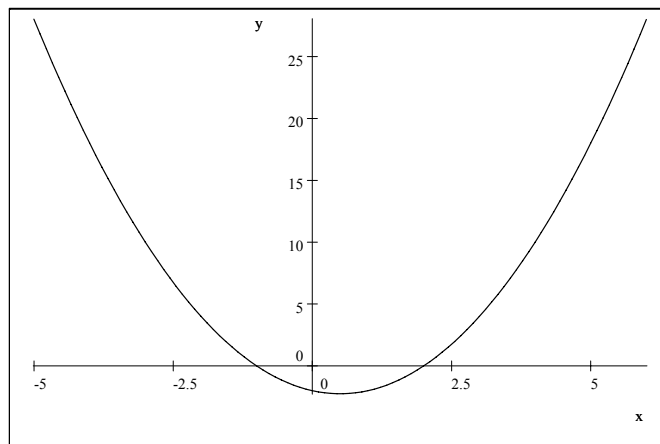
4.  $4y = 8$



5.  $y = x^2 - 4$



6.  $y = x^2 - x - 2$



7.  $y = (x - 2)(x + 1)$

