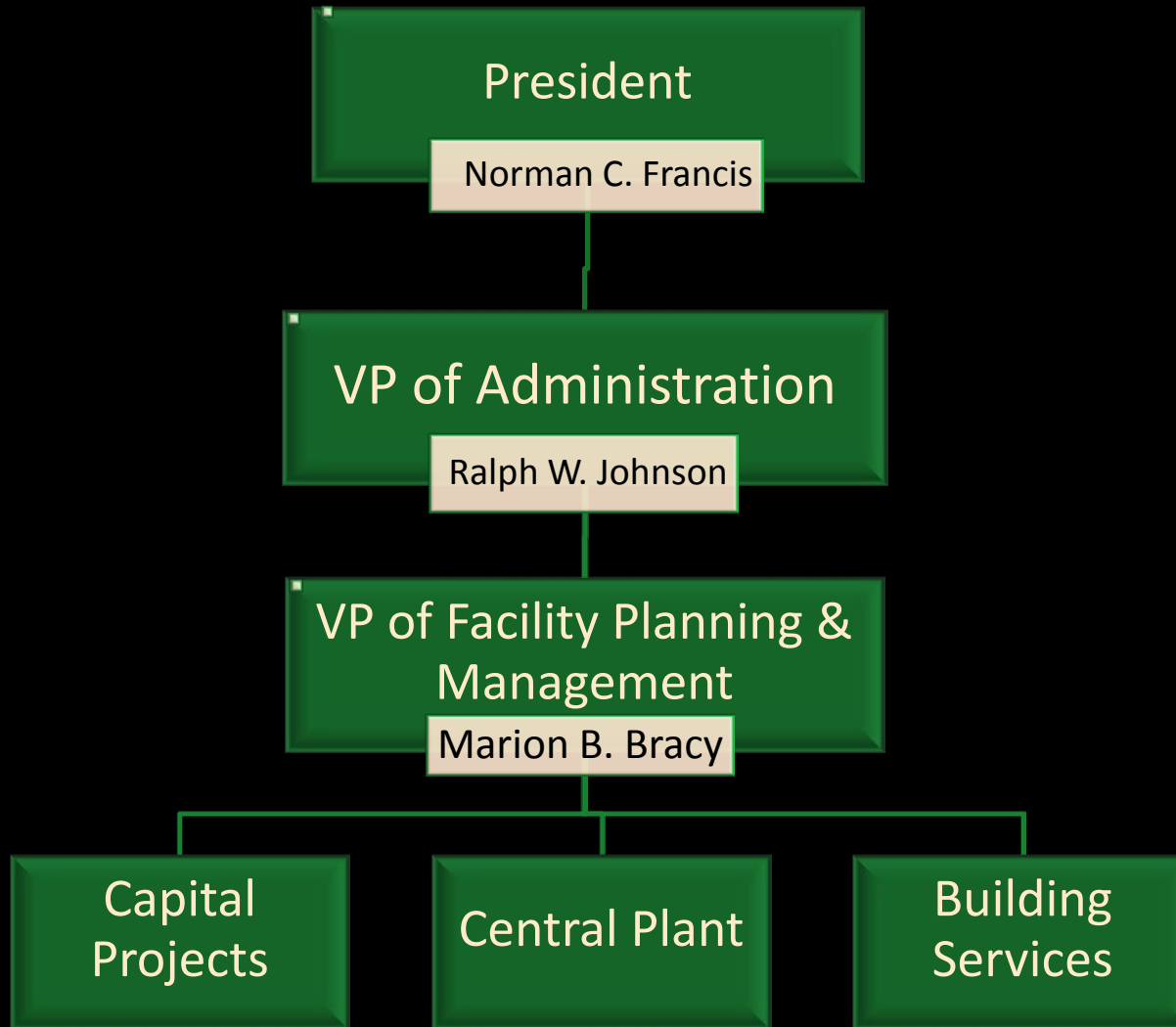


# Xavier University of Louisiana

Office of Facility Planning &  
Management

# Organizational Chart



# Organization Breakdown

- *Capital Projects & New Construction*
  - Environmental Compliance
  - Governmental Compliance
  - Coordination of Vendors, Contractors, and Professional Services



# Capital Projects

## The Triple “A” Approach

- I. Archived Projects are at least 90% complete or have been completed.
- II. Active Projects are currently in the planning stages, in progress, or have not been substantially completed.
- III. Anticipated Projects are currently a part of the Strategic Master Plan but are in the preliminary concept phases.

For more on Capital Projects, visit <http://www.xula.edu/facility/projects.php>

# Building Services

- Day-to-Day Maintenance
  - Housekeeping
  - Grounds
  - Electrical
  - Plumbing
  - Painting
- Logistics and Set-ups
- Receiving
- Work Order Control



# Central Plant

- HVAC (Heating, Ventilation & Air Conditioning)
- Engineering Services
- Temperature Control
- 24/7 Emergency Service

# Who's Among Facility Planning & Management





# FP&M Staff

Ireon Jackson  
Executive Assistant  
[ijackso1@xula.edu](mailto:ijackso1@xula.edu)  
520.5190

Ruby Nguyen  
CAD Operator  
[rnuygen4@xula.edu](mailto:rnuygen4@xula.edu)  
520.5798

Daria Harrison  
Administrative and  
Communications Intern  
[dharri19@xula.edu](mailto:dharri19@xula.edu)  
520.7871





# FP&M Staff

Bridget Irvin  
Building Services,  
Administrative Assistant  
[bferroui@xula.edu](mailto:bferroui@xula.edu)  
520.7324



Cynthia Watson  
TMA Administrator  
[cwmcelve@xula.edu](mailto:cwmcelve@xula.edu)  
520.7612



Curtis Carkum  
Building Manager,  
Convocation Center &  
Annex  
[ccarkum@xula.edu](mailto:ccarkum@xula.edu)  
520.7262



# Building Services

Steve Elloie  
Physical Plant,  
Assistant to Director for  
Administration  
[selloie@xula.edu](mailto:selloie@xula.edu) | 520.5200

Sheppard Roubion  
Building Services, Director  
[sroubion@xula.edu](mailto:sroubion@xula.edu) | 520.7326

Harold Vincent, Jr.  
Physical Plant,  
Assistant to Director for  
Operations  
[hvincen1@xula.edu](mailto:hvincen1@xula.edu) | 520.7324



# Capital Projects

Rawan Davis  
Project Manager  
[rdavis@xula.edu](mailto:rdavis@xula.edu)  
520.7420



Bruce Hamilton  
Project Manager  
[bjhamilt@xula.edu](mailto:bjhamilt@xula.edu)  
520.7509



Keith Dillon  
Project Manager  
[kdillon@xula.edu](mailto:kdillon@xula.edu)  
520.5797



# Central Plant

Kerwin Byrd  
Central Plant, Chief Engineer  
[kbyrd@xula.edu](mailto:kbyrd@xula.edu) | 520.7548



Karl Jenkins  
Central Plant, Engineering  
Supervisor  
[kjenkin3@xula.edu](mailto:kjenkin3@xula.edu) | 520.7547





# Vice President of Facility Planning & Management

Marion B. Bracy



[mbracy@xula.edu](mailto:mbracy@xula.edu) | 520.5191